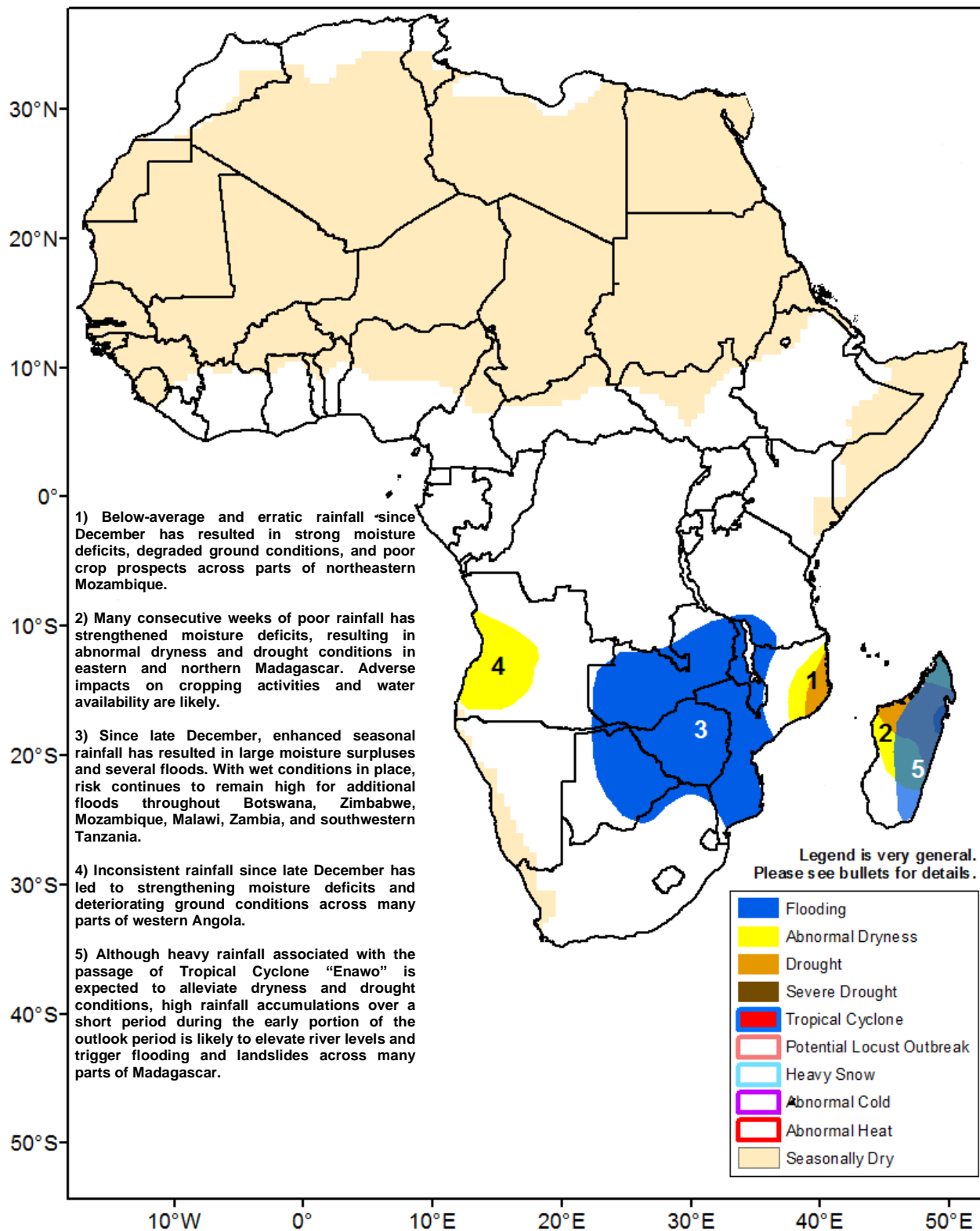




Climate Prediction Center's Africa Hazards Outlook March 9 – March 15, 2017

- Heavy rainfall associated with Tropical Cyclone Enawo expected to alleviate seasonal dryness, but elevate risk of flooding across eastern Madagascar.



Heavy rains continues across southeastern Africa

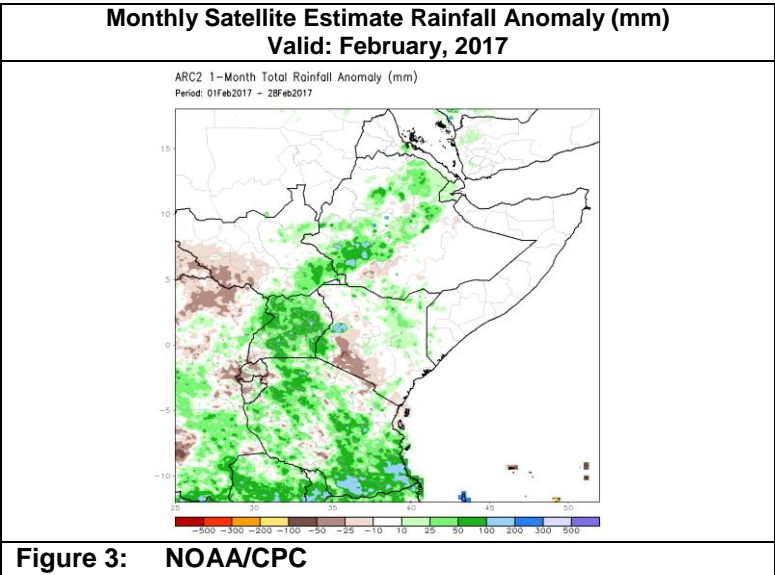
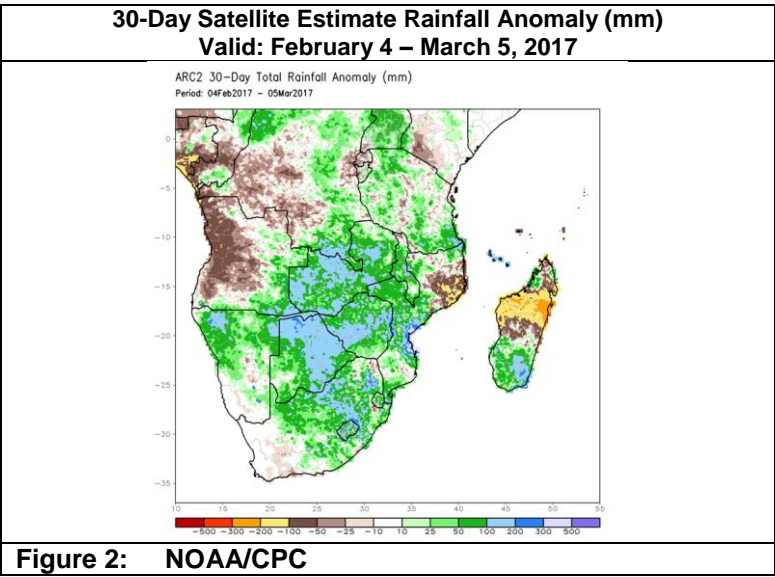
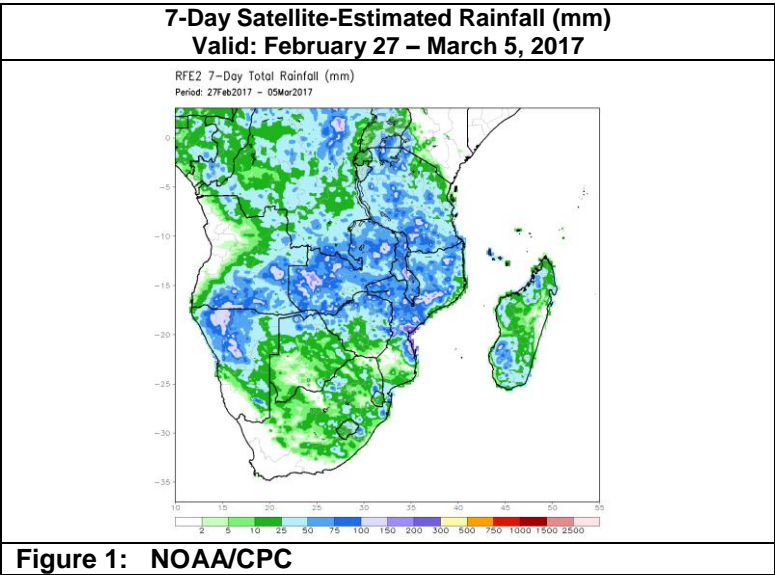
During the last week, the southern Africa monsoon circulation remained robust throughout southeastern Africa, however an extension of moisture convergence was observed towards the west bringing increased precipitation amounts over portions of northern Namibia. According to satellite rainfall estimates, the highest weekly accumulations (>150mm) were received across central Mozambique, where regional pockets of high rainfall (>100mm) totals were also received across many parts of northern Namibia, eastern Angola, Zambia, Malawi, and southern Tanzania (Figure 1). Compared to the previous week's rainfall distribution, a sharp reduction in rainfall was felt across eastern Botswana, as more seasonable rainfall was received in the region. In addition, increased rainfall amounts were received across northern Namibia. However, diminished and poorly distributed rains were again observed across western Angola, sustaining seasonal moisture deficits in the region.

Since early February, there has been little change to the saturated conditions throughout southeastern Africa. Analysis of the latest short-term rainfall anomaly fields depict largely positive conditions throughout much of the southern continent, with surpluses exceeding 100mm throughout much of Botswana, Zimbabwe, Mozambique, Zambia and South Africa (Figure 2). The large extent of the anomalously wet conditions has resulted in numerous flood events, inundated river basins, damages to crops and infrastructure, and fatalities during the course of the monsoon season. This year's monsoon distribution has been in sharp contrast to last year, where poorly distributed rainfall was widespread throughout southern Africa, which had caused sweeping moisture shortages and many adverse ground impacts.

For the upcoming outlook period, heavy rainfall is forecast over many parts of Madagascar as Tropical cyclone "Enawo" exits the island. Heavy rains are also forecast throughout southern Angola, Zambia, and Malawi for next week.

Favorable early seasonal rains received over Ethiopia.

Following a poor OND rains season last year in the Greater Horn of Africa, early season "belg" rainfall suggests favorable signs of moisture recovery throughout Ethiopia. Analysis of monthly precipitation anomalies depict average to above-average conditions, with surpluses exceeding 25mm in many local parts of the SNNP, Oromia, and Amhara regions of the country (Figure 3). Despite the above-average rains favorable for cropping activities, precipitation forecasts suggest a reduction of rainfall during the first dekad of March, with only light rainfall accumulations expected in the higher elevations of Ethiopia.



Note: The hazards outlook map on page 1 is based on current weather/climate information and short and medium range weather forecasts (up to 1 week). It assesses their potential impact on crop and pasture conditions. Shaded polygons are added in areas where anomalous conditions have been observed. The boundaries of these polygons are only approximate at this continental scale. This product does not reflect long range seasonal climate forecasts or indicate current or projected food security conditions.