

Climate Prediction Center's Afghanistan Hazards Outlook 20 April – 26 April, 2023

Temperature:

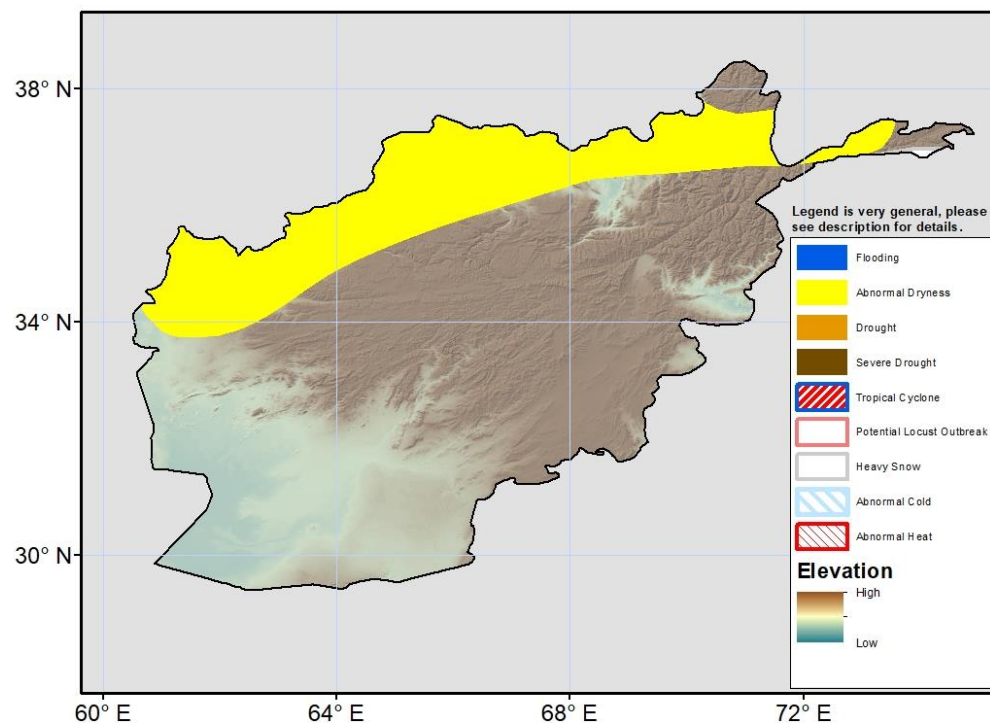
Mean maximum temperatures were above average across Afghanistan during the past week. Larger observed maximum temperature anomalies of 4-8°C were recorded in the Northwest. Northern provinces observed maximum temperatures higher than 25°C, and southwestern provinces higher than 30°C or 35°C. Slightly warmer than average minimum temperatures (2-4°C anomalies) were generally observed across the country. Minimum temperatures in the northern lowlands stayed above 10°C. Some of the higher portions of the central highland received sub-zero minimum temperatures, while much of the country remained above freezing.

Cooler than average conditions will persist early in the outlook period associated with the current storm system. Warmer temperatures will follow behind from the west, and most of the country will experience warmer-than-average temperatures by the end of the outlook period. As a result, the 7-day mean temperatures according to the GEFS model are warmer than average by 1-2°C in the West and cooler than average by 1-2°C in the South and East. Subfreezing temperatures are expected at elevations around 3,000m and higher. Maximum temperatures are forecast to exceed 30°C in the low elevations of the North and the Southwest.

Precipitation:

During the last 7 days, moderate to locally heavy precipitation occurred across eastern and northeastern Afghanistan. Liquid equivalent totals of 10-50mm were observed, with significant snows accumulating at higher elevations. Some lighter rains were observed in central and southern regions. Due to enhanced precipitation in recent weeks, 30-day rainfall analysis shows positive anomalies (25-100mm) for parts of eastern Afghanistan, though deficits (10-50mm) linger across the North. Snow water equivalent values still remain well-below average across the country. As such, abnormal dryness is present over northern and northwestern Afghanistan.

For the outlook period, light to moderate snowfall is forecast for the northeast mountains – especially early in the period. 10-25cm of snow is likely in the Northeast, and some snow showers are possible in the higher parts of the central highlands. Light to moderate rains (5-25mm) are expected for some eastern portions of the country.



Note: The Hazards outlook map is based on current weather/climate information, short and medium-range weather forecasts (up to 1 week), sub-seasonal forecasts up to 4 weeks, and assesses the potential impact of extreme events on crop and pasture conditions. Shaded polygons are added in areas where anomalous conditions have been observed and predicted to continue during the outlook period. The boundaries of these polygons are only approximate at the spatial scale of the map. This product considers long-range seasonal climate forecasts but does not reflect current or projected food security conditions. FEWS NET is a USAID-funded activity whose purpose is to provide objective information about food security conditions. Its views are not necessarily reflective of those of USAID or the U.S. Government. The FEWS NET weather hazards outlook process and products include participation by FEWS NET field and home offices, NOAA-CPC, USGS, USDA, NASA, and several other national and regional organizations in the countries concerned.

Questions or comments about the hazard's outlooks may be directed to Dr. Wassila Thiaw, Head, International Desks/NOAA, wassila.thiaw@noaa.gov. Questions about the USAID FEWS NET activity may be directed to Dr. James Verdin, Program Manager, FEWS NET/USAID, jverdin@usaid.gov