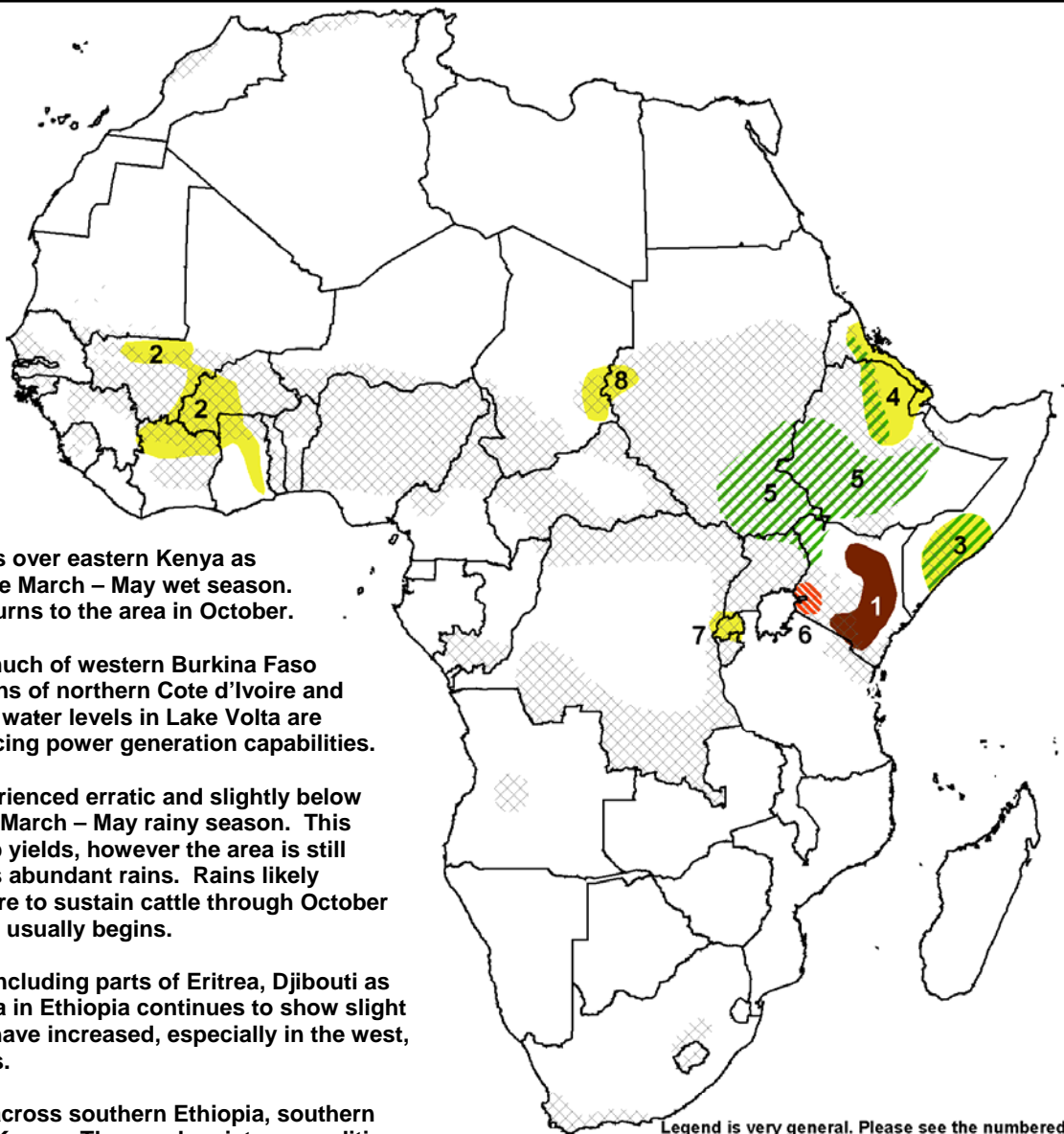


- Dryness throughout much of western Burkina Faso is leading to poor agricultural conditions and low water levels in Lake Volta.
- Much of southern Ethiopia is experiencing above normal moisture conditions due to abundant seasonal rainfall.



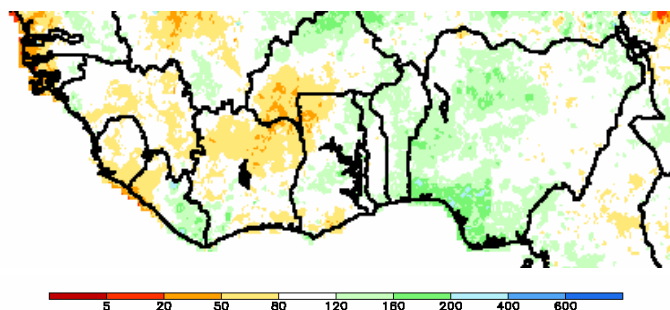
Legend is very general. Please see the numbered descriptions for each area depicted on the map.

Extreme Event	Flooding
Humanitarian Concern	Severe, Long Term Drought
Favorable	Drought
Somewhat Favorable	Short Term Dryness or Drought Recovery
In Season Crop Areas	

Dryness continues in areas of western Burkina Faso, northern Ivory Coast, and western Mali.

While much of the Sahel has experienced near normal seasonal precipitation, some western locations have seen a lack of moisture during the past two months. In particular, the area in and around southwestern Burkina Faso has been abnormally dry for nearly six out of the past seven dekads. This is negatively affecting agriculture and pasture conditions throughout the region. With similar importance, the lack of rainfall has led to a deterioration of water supplies incoming to Lake Volta in Ghana. Due to the fact that the 2006 first season rains were lighter than normal in this region, lake levels were much lower than average even before the current seasonal dryness.

Percent of Normal Seasonal Precipitation
As of July 11, 2007

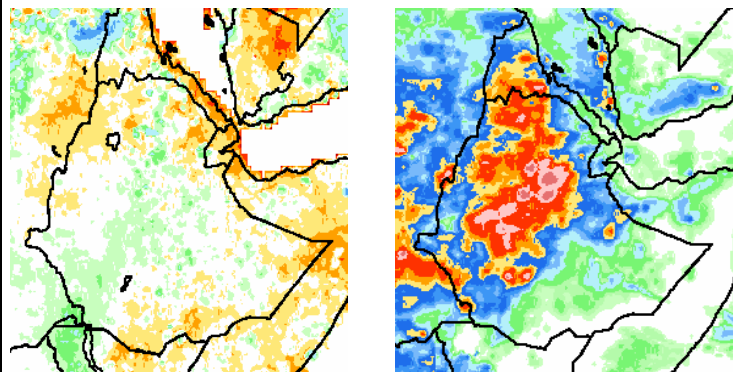


Source FEWS-NET/NOAA

Rainfall increases in northern zones of Ethiopia

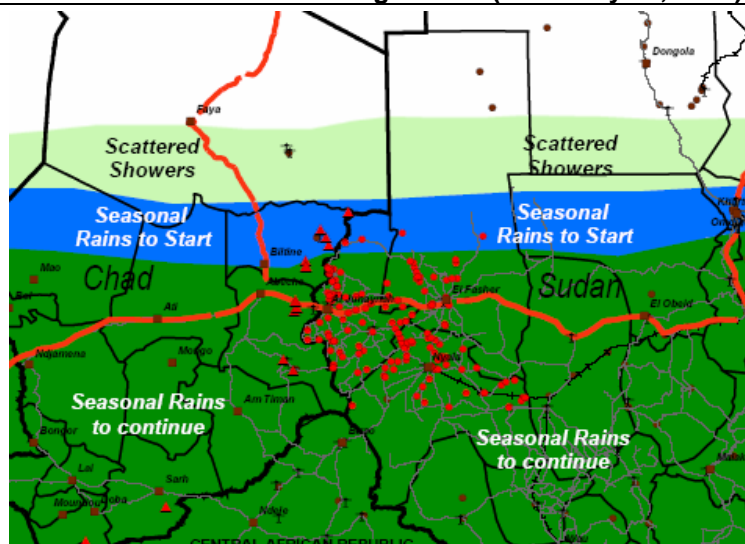
Though precipitation began a few weeks late in north central areas of Ethiopia, rainfall during the past ten days has greatly increased throughout the region. In and around Afar, accumulated rainfall beginning May 1 has reached near normal levels in many locations, though some eastern areas continue to see a lagged start to the 2007 rains. Examining the past seven days of precipitation in the area, it is observed that rains have increased substantially in western Afar into the adjacent Ethiopian Highlands, with weekly totals exceeding 75 mm in some locations. Conditions remain slightly dry to the east, though rains should continue to spread in coverage during the next weeks.

Percent of Normal Seasonal Precipitation (left)
7-Day Accumulated Precipitation (right)
Ending July 11, 2007



Source FEWS-NET/NOAA

Current Darfur Rainfall Progression (as of July 11, 2007)



Source FEWS-NET