

Current vs Mean Position of the Africa ITCZ

As analyzed by the NOAA Climate Prediction Center

September 2006 Dekad 2

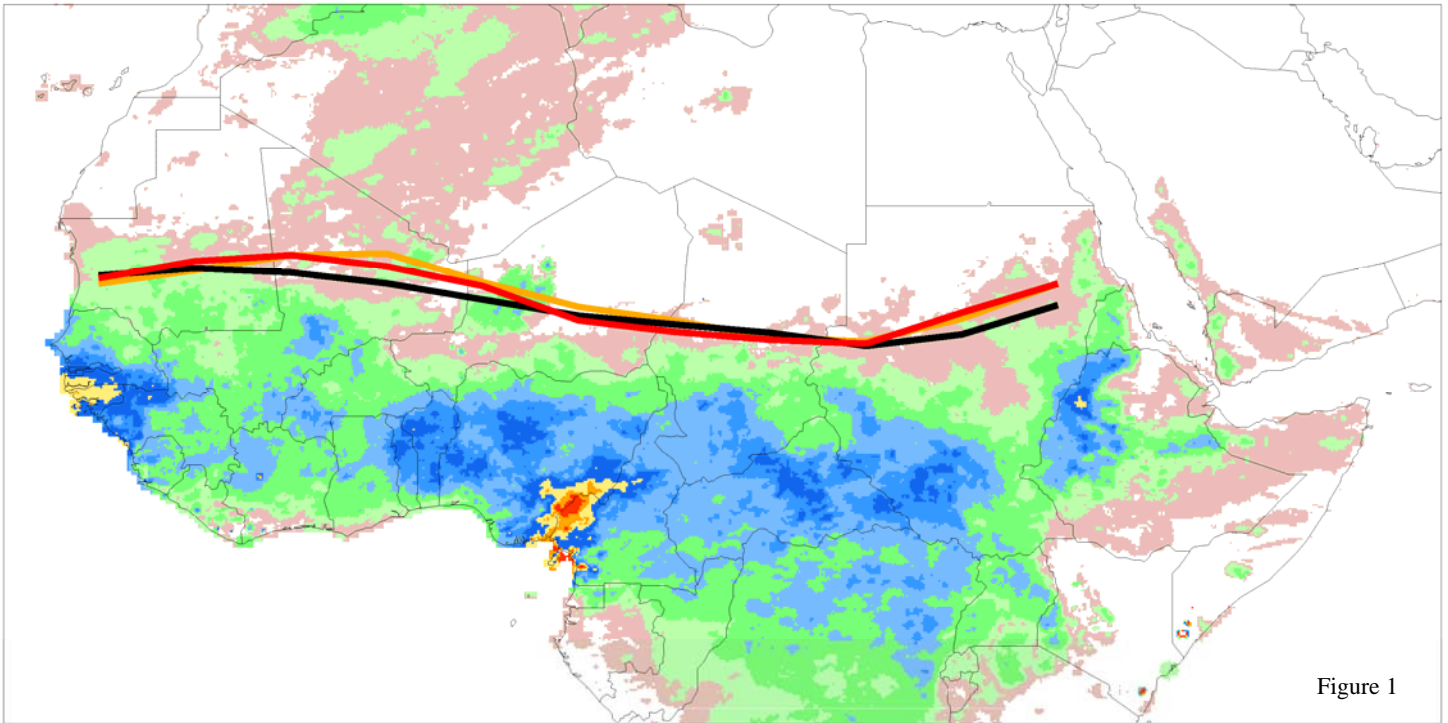
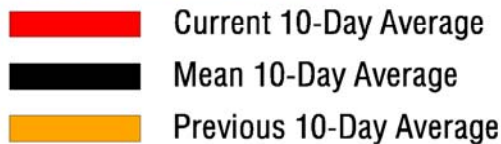


Figure 1

Accumulated Dekadal Precipitation:



Mean Position of the ITCZ
10 degrees west - 10 degrees east longitude

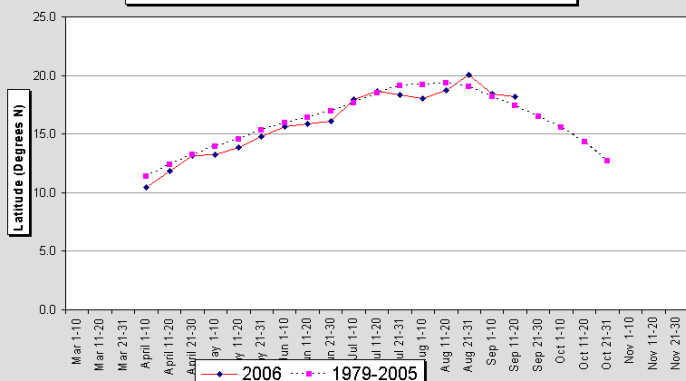


Figure 2

Mean Position of the ITCZ
20-35 degrees east longitude

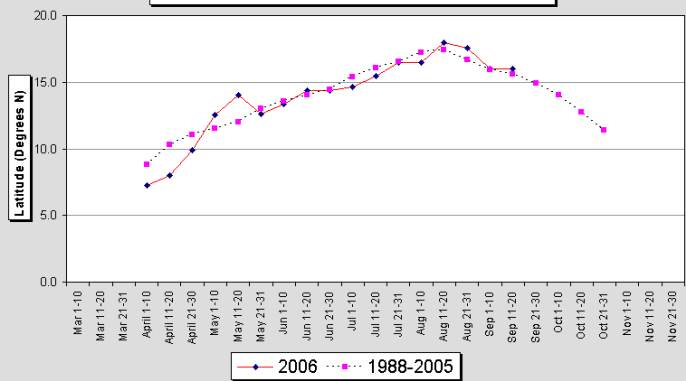


Figure 3

During the period from September 11 – 20, 2006, the African portion of the ITCZ was located near 17.2 degrees north latitude when averaged from 15 degrees west to 35 degrees east longitude and over the ten day period. This compares to the normal position of around 16.8 degrees north, and a position last year near 15.7 north. The ITCZ was nearly stationary during the previous ten days, when averaged over the entire Sahel. See Figure 1 for the current, past, and mean ITCZ with ten day accumulated precipitation. Examining the western region, from 10W-10E, latest ITCZ position was around 18.2N, compared to a normal position of 17.7N. In this region, the ITCZ moved around 0.2 degrees south from the previous period. See Figure 2. In the east, from 20E-35E, the ITCZ was located near 16.0N, compared with a 1988-2005 mean position of 15.5N. When averaged over this eastern region, the ITCZ did not move substantially compared to the first dekad of September.