

Current vs Mean Position of the Africa ITCZ

As analyzed by the NOAA Climate Prediction Center

October 2006 Dekad 2

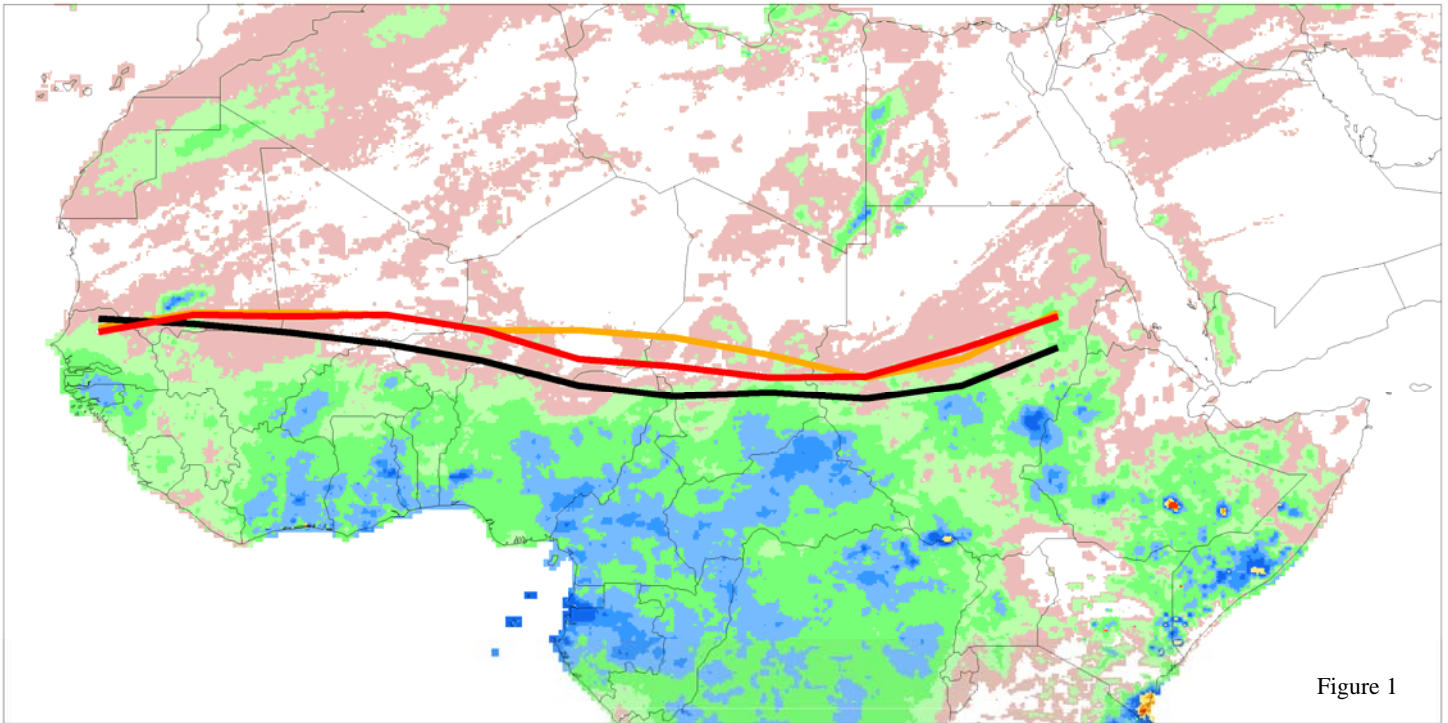
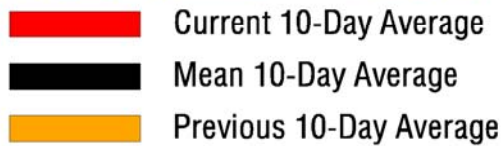


Figure 1

Accumulated Dekadal Precipitation:



Mean Position of the ITCZ
10 degrees west - 10 degrees east longitude

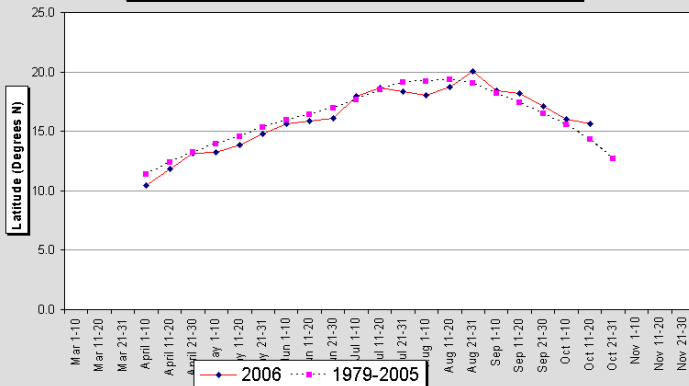


Figure 2

Mean Position of the ITCZ
20-35 degrees east longitude

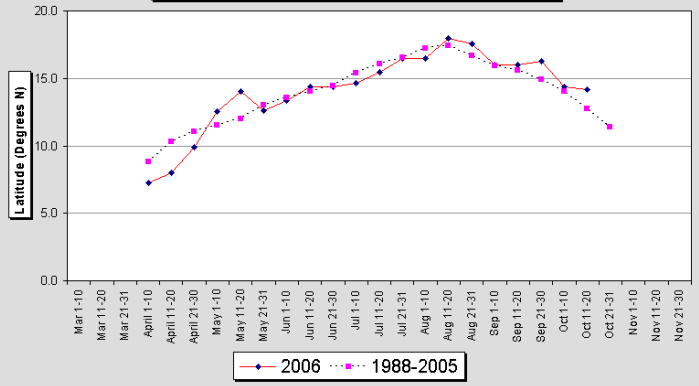


Figure 3

During the period from October 1 – 10, 2006, the African portion of the Intertropical Convergence Zone was located near 14.9 degrees north latitude, when averaged from 15 degrees west to 35 degrees east. This compares to the climatological mean of around 13.8N, the position last year of around 13.8N, and the position during the previous decade of ~15.3N. Therefore, the ITCZ is moving slightly more slowly to the south than previous years. See Figure 1. In the west (from 10W-10E), the ITCZ was located near 15.7N, which was around 0.3 degrees south from last period, around 1.2 degrees north of normal, and 1.3 degrees north of the position last year during the same period. In the east (20E-35E), the ITCZ was located near 14.2 degrees north, which was 0.2 degrees south from last period, around 1.4 degrees north of normal, and around 0.8 degrees north of the position last year. Note that the final 2006 ITCZ product will be disseminated after the next dekad (Oct 21-31).