

Current vs Mean Position of the Africa ITCZ

As analyzed by the NOAA Climate Prediction Center

October 2007 Dekad 1

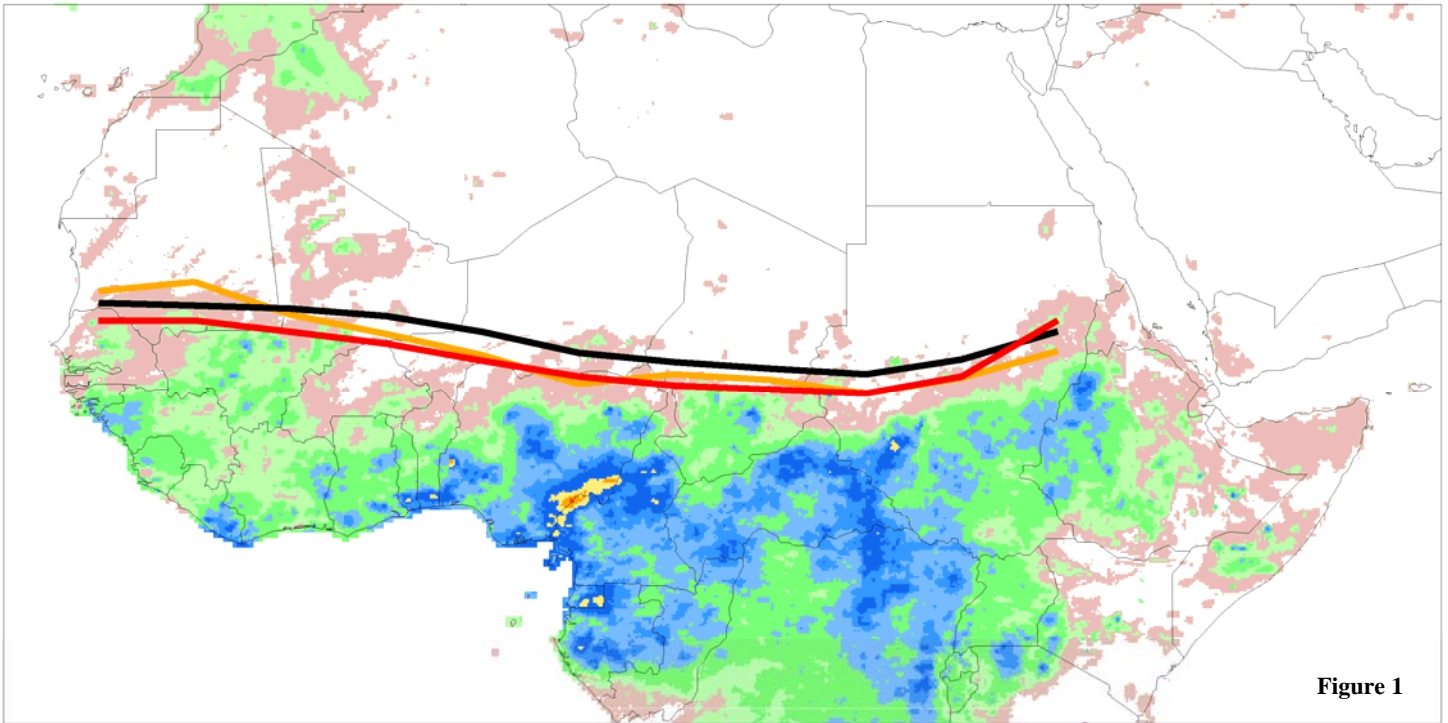


Figure 1

Accumulated Dekadal Precipitation:

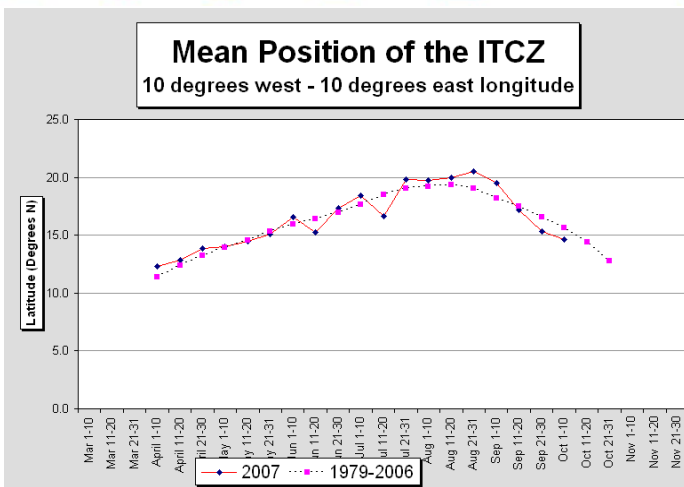
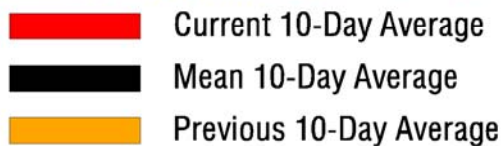


Figure 2

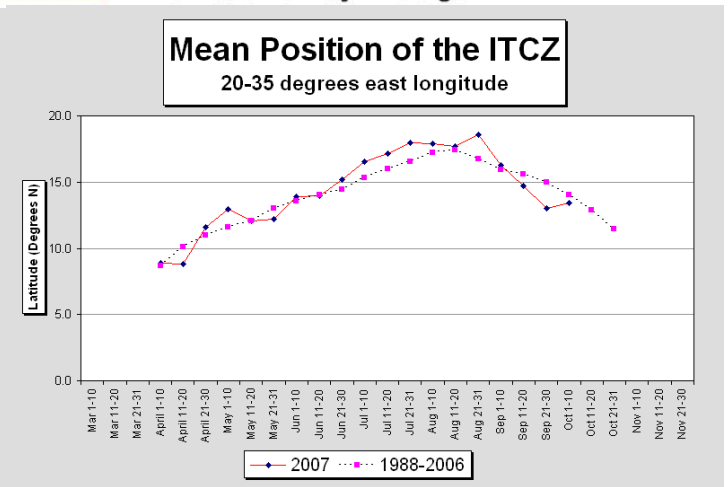


Figure 3

During the period from October 1 - 10, 2007, the African portion of the ITCZ shifted southward having a mean latitude of approximately 14.1 degrees north when averaged over the ten day period and from 15W-35E. This is lower than its normal position of 15.1 degrees N which for this dekad. In the west, from 10W-10E, the ITCZ was located near 14.8 degrees north, compared to the long term mean of around 16.0 degrees north, and a position last year of 15.9N. In the east, from 20E-35E, the ITCZ was located near 13.4N, compared with 14.0 N for the mean and last years position of 14.4N. The ITCZ has been moving south rapidly since early September. This southward trend has slowed in the west, and reversed slightly in the east. The ITCZ, other than in eastern Sudan, remains south of normal.