

Current vs Mean Position of the Africa ITCZ

As analyzed by the NOAA Climate Prediction Center

May 2007 Dekad 3

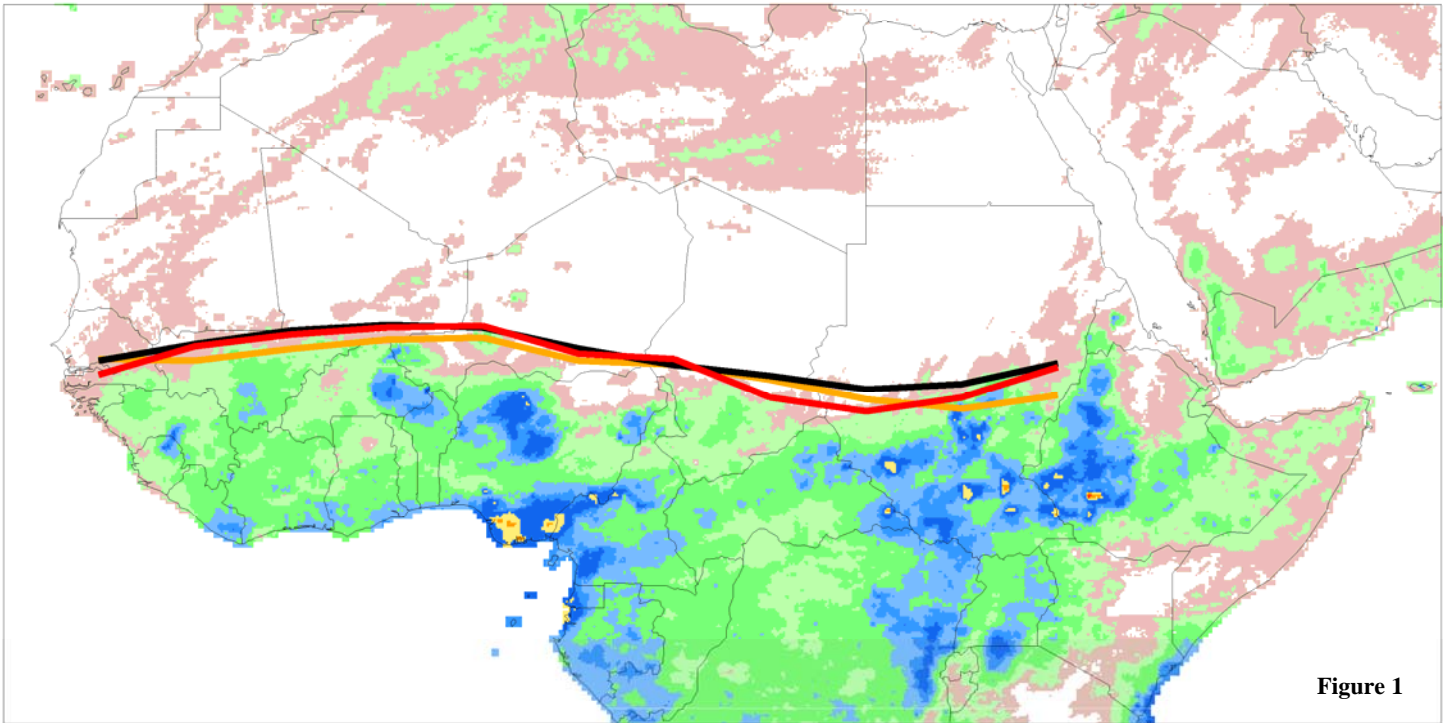
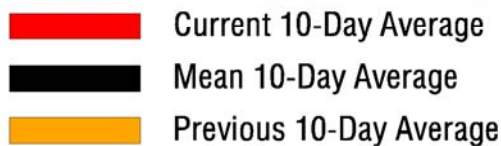


Figure 1

Accumulated Dekadal Precipitation:



Mean Position of the ITCZ
10 degrees west - 10 degrees east longitude

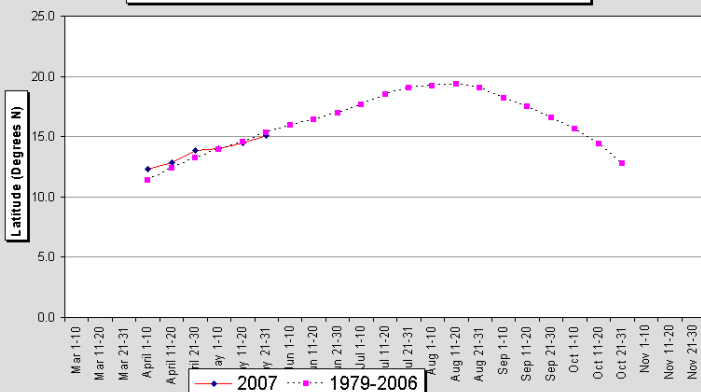


Figure 2

Mean Position of the ITCZ
20-35 degrees east longitude

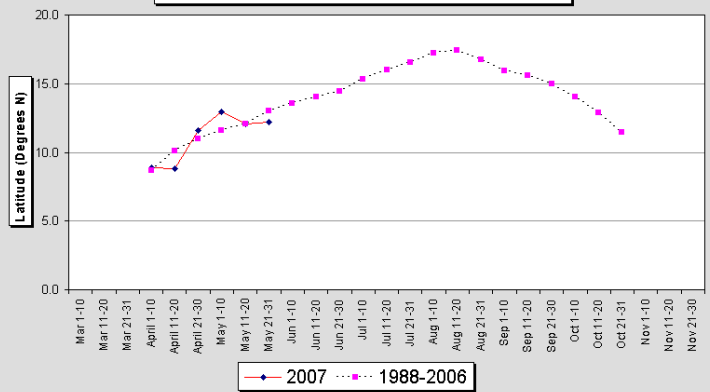


Figure 3

During the period from May 21-31, 2007, the African portion of the ITCZ was located near 13.8 degrees north latitude when averaged over the ten day period and from 15W-35E. This compares with a normal position of 14.2N and a position last dekad of 13.7N. In the west, from 10W-10E, the ITCZ was located near 15.1 degrees north, compared to the long term mean of around 15.2 degrees north, and a position last year of 14.8N. In the east, from 20E-35E, the ITCZ was located near 12.2N, compared with 13.0N for the mean, and 12.6N for last year.