

Current vs Mean Position of the Africa ITCZ

As analyzed by the NOAA Climate Prediction Center

May 2007 Dekad 2

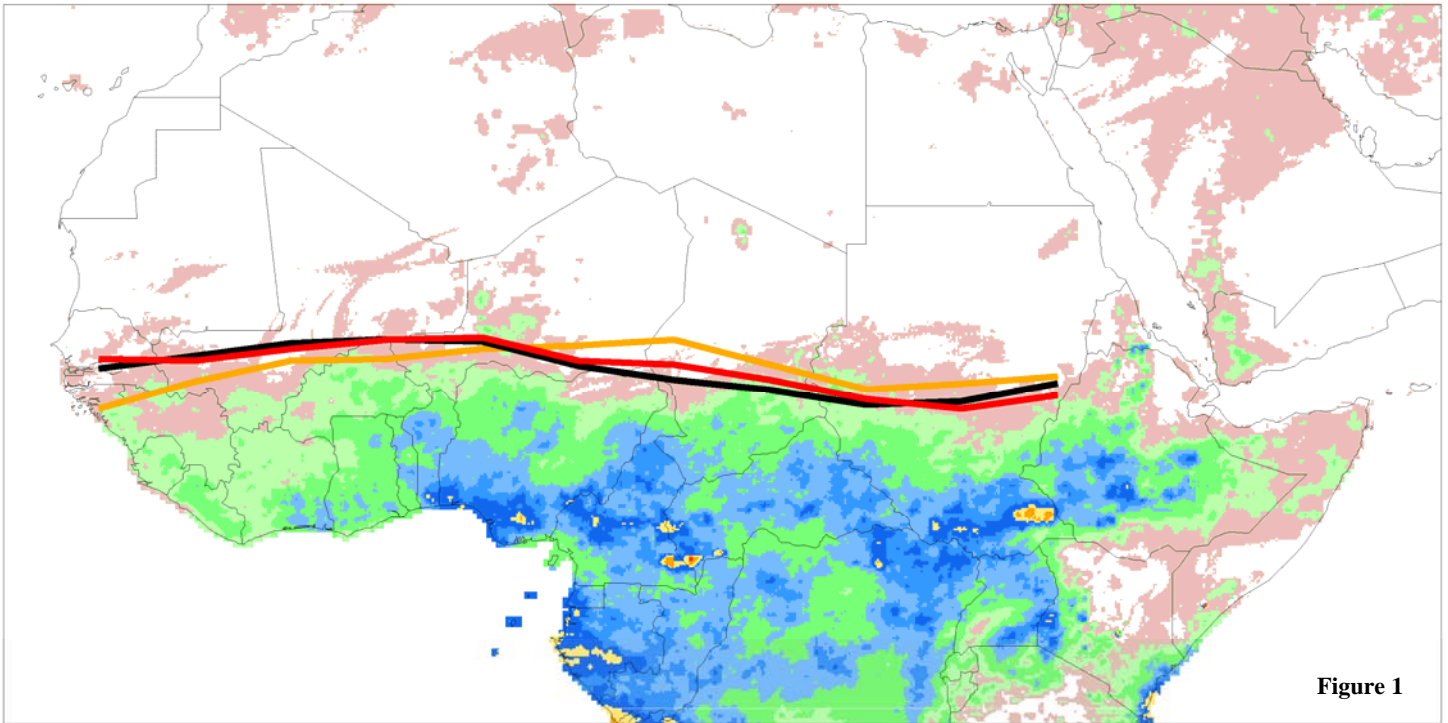
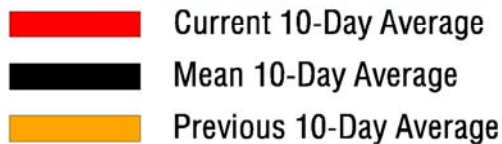


Figure 1

Accumulated Dekadal Precipitation:



Mean Position of the ITCZ
10 degrees west - 10 degrees east longitude

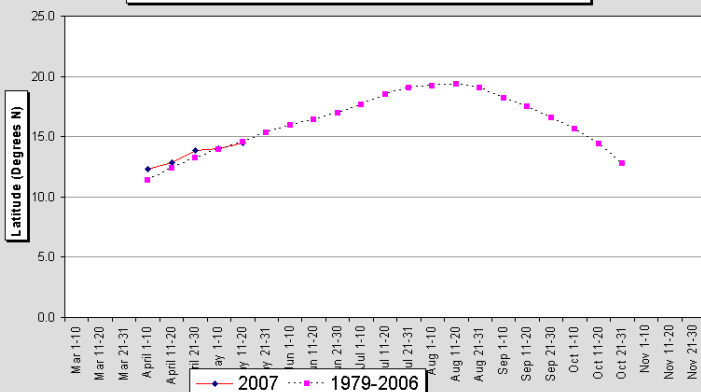


Figure 2

Mean Position of the ITCZ
20-35 degrees east longitude

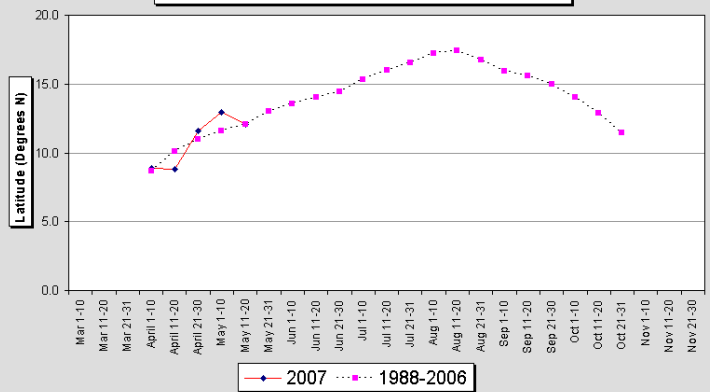


Figure 3

During the period from May 11 – 20 2007, the African portion of the ITCZ was located near 13.5 degrees north latitude when averaged over the ten day period and from 15W-35E. This compares with a normal position of 13.4N and a position last dekad of 13.6N. From Figure 2, the western region of the ITCZ moved slightly to the north during the previous dekad. This brought the ITCZ to near normal in the east. Meanwhile in the west the ITCZ retreated south to a near normal position, see Figure 3. In the west (10W-10E) the ITCZ was located near 14.5N. In the east (20E-35E), the ITCZ was located near 12.1N.