

# Current vs Mean Position of the Africa ITCZ

As analyzed by the NOAA Climate Prediction Center

## June 2007 Dekad 2

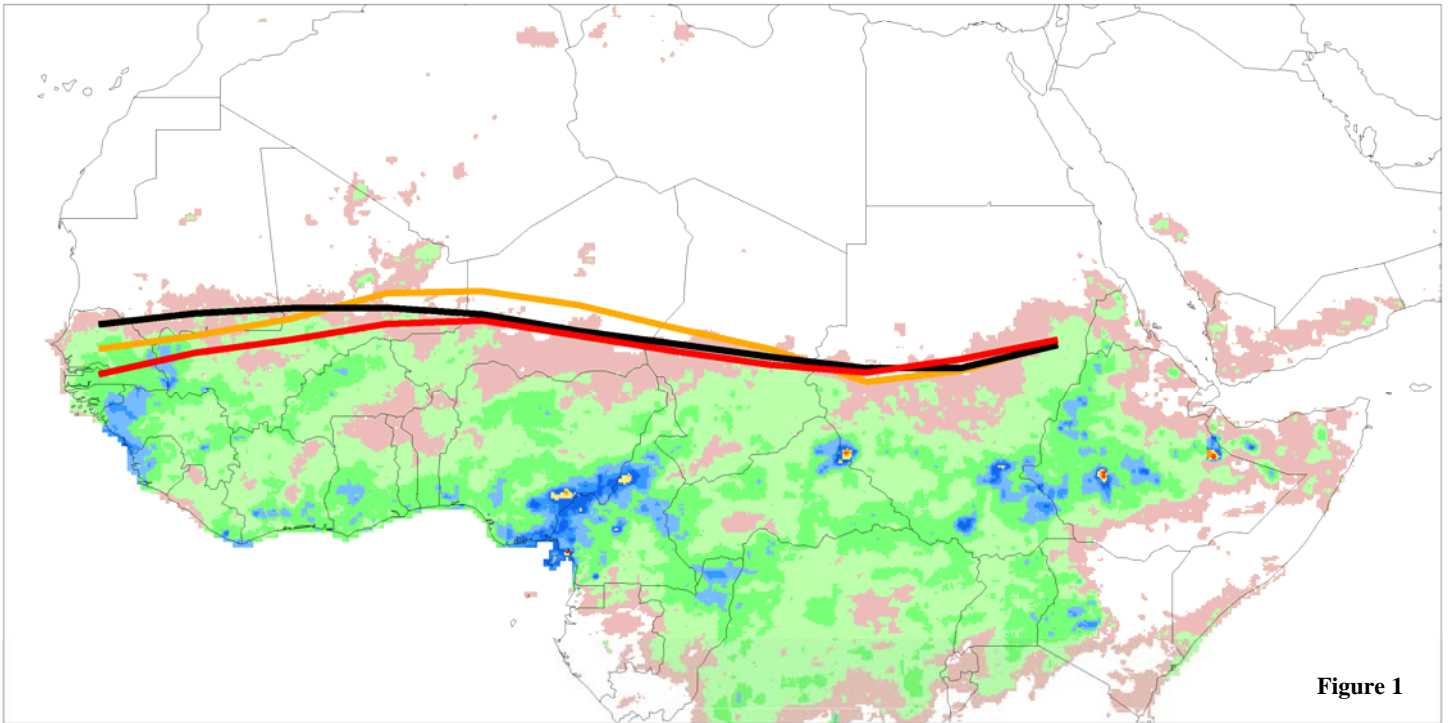
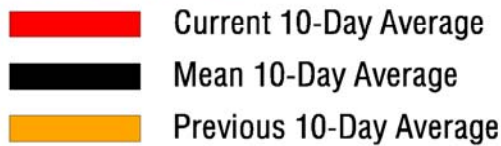


Figure 1

Accumulated Dekadal Precipitation:



**Mean Position of the ITCZ**  
10 degrees west - 10 degrees east longitude

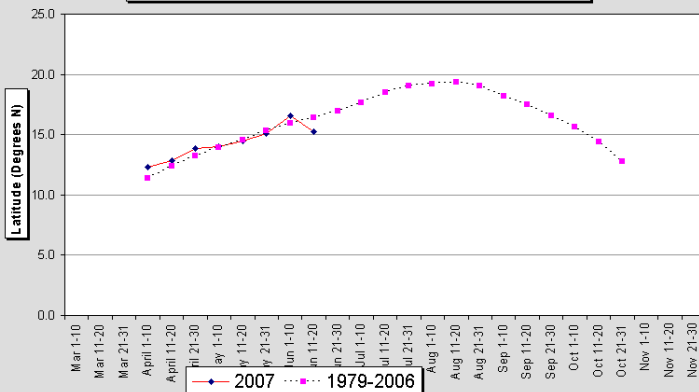


Figure 2

**Mean Position of the ITCZ**  
20-35 degrees east longitude

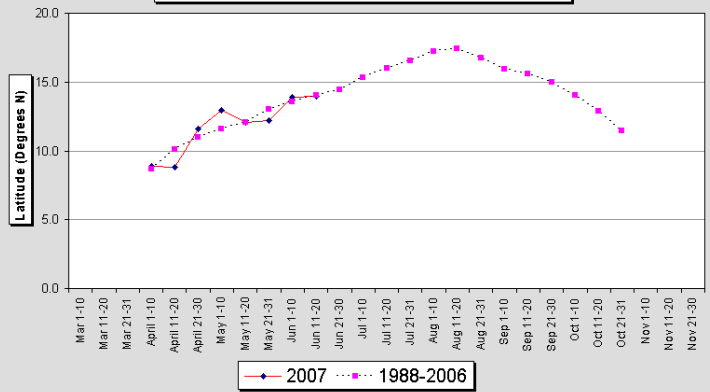


Figure 3

During the period from June 11 - 20, 2007, the African portion of the ITCZ was located near 14.5 degrees north latitude when averaged over the ten day period and from 15W-35E. This compares with a normal position of 15.2N and a position last dekad of 15.3N. In the west, from 10W-10E, the ITCZ was located near 15.3 degrees north, compared to the long term mean of around 16.3 degrees north, and a position last year of 15.8N. In the east, from 20E-35E, the ITCZ was located near 14.4N, compared with 14.0N for the mean, and 14.4N for last year. During the past dekad, rainfall over the region was suppressed contributing to the southward movement of the ITCZ.