

Current vs Mean Position of the Africa ITCZ

As analyzed by the NOAA Climate Prediction Center

July 2005 Dekad 3

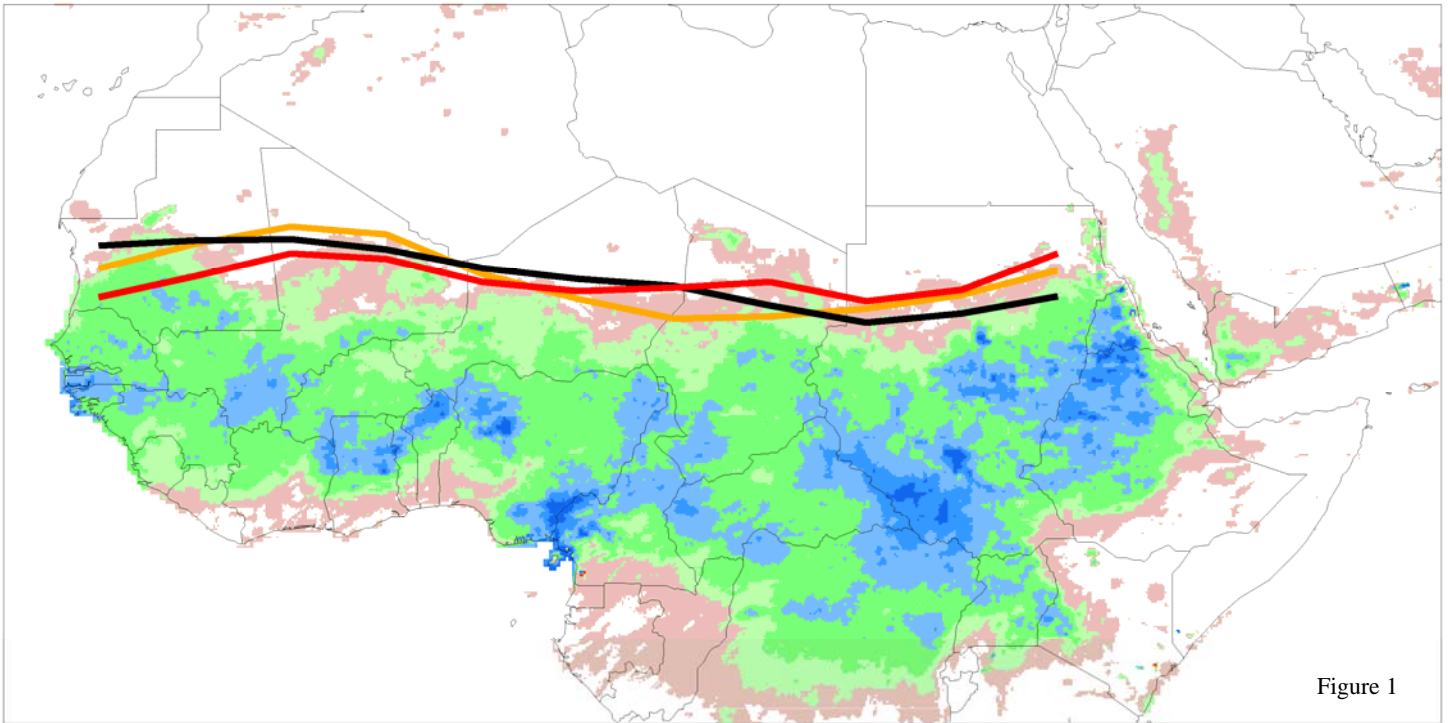
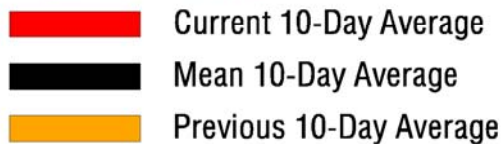


Figure 1

Accumulated Dekadal Precipitation:



Mean Position of the ITCZ
10 degrees west - 10 degrees east longitude

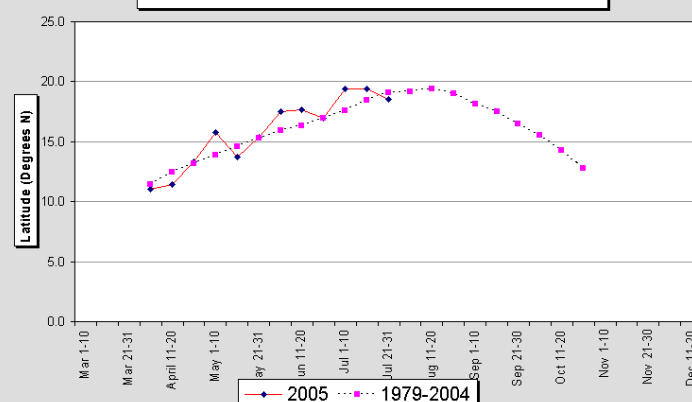


Figure 2

Mean Position of the ITCZ
20-35 degrees east longitude

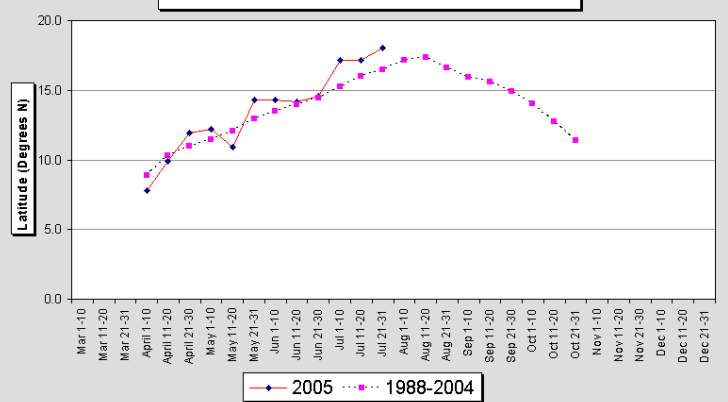


Figure 3

During the period from July 21-31, 2005, the African portion of the ITCZ was located near 18.1 degrees north latitude, compared with the 1988-2004 mean position of 18.3N, a previous dekadal position of 18.2N, and a position during the same dekad 2004 of 18.5N. While the ITCZ continued its northward movement roughly in the area east of 10 degrees E longitude, it moved south from its position during the previous period in areas to the west. Strong winds from the north after the passage of an Easterly Wave on July 24th forced the convergence zone to the south over Mauritania and Mali, leading to the displacement from last period. In fact, examining the west region of the ITCZ (10W-10E), the current position of 18.5 degrees north is almost a full degree south of both the climatological normal and its position from July 11-20. The eastern (20-35E) region did continue to move north, and its current location of 18.0N is around 1.4 degrees north from the long term mean.