

# Current vs Mean Position of the Africa ITCZ

As analyzed by the NOAA Climate Prediction Center

## July 2007 Dekad 2

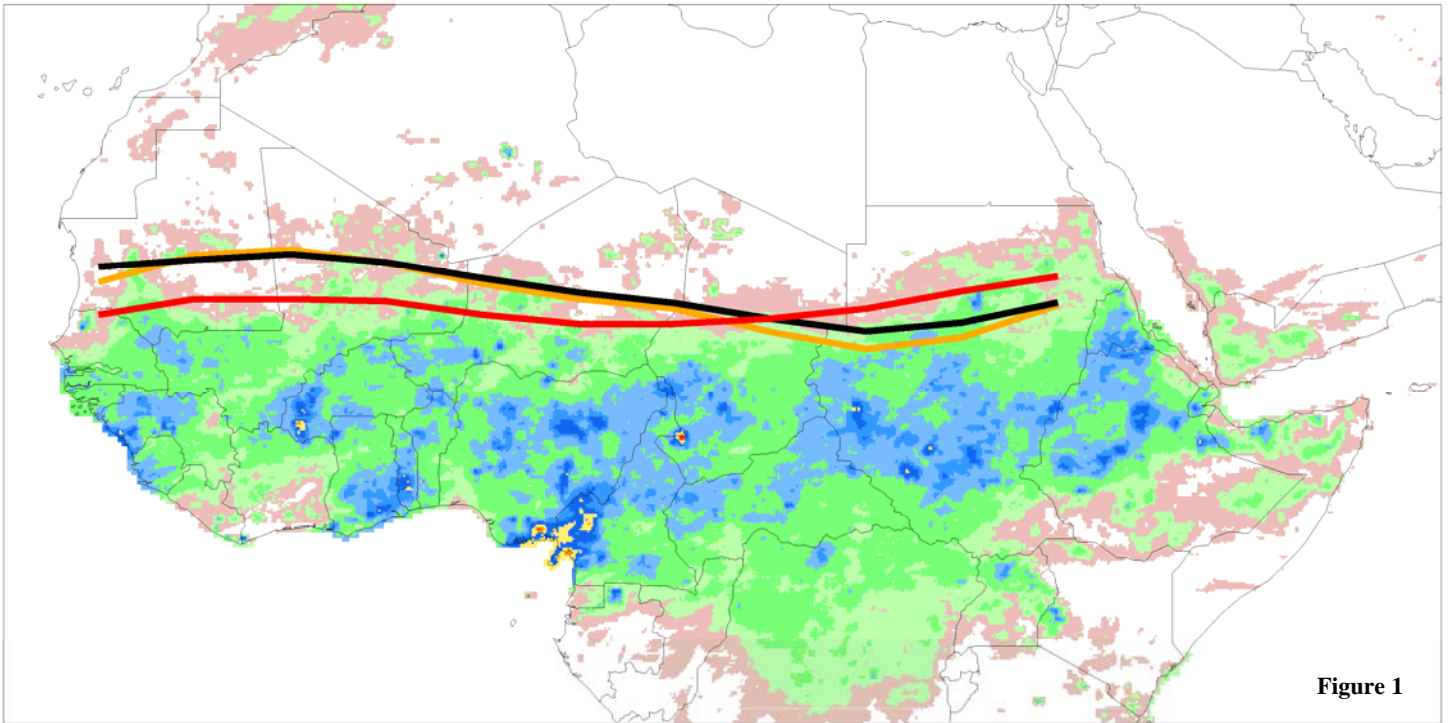
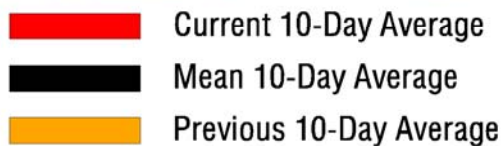


Figure 1

Accumulated Dekadal Precipitation:



**Mean Position of the ITCZ**  
10 degrees west - 10 degrees east longitude

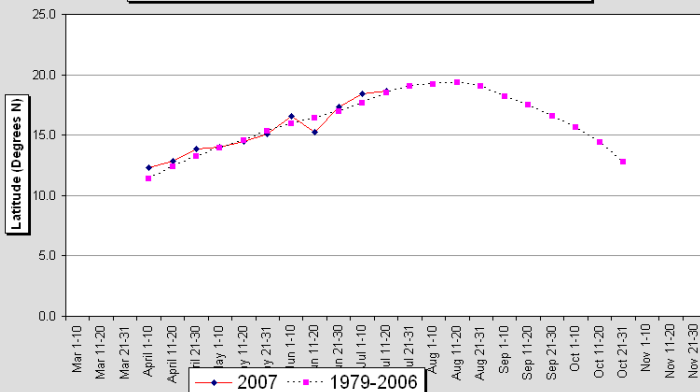


Figure 2

**Mean Position of the ITCZ**  
20-35 degrees east longitude

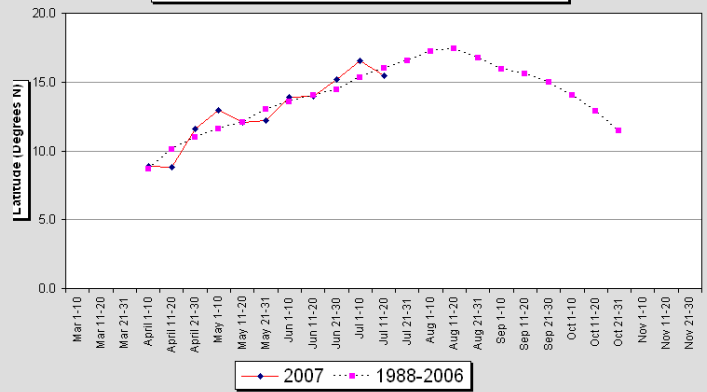


Figure 3

During the period from July 11 - 20, 2007, the African portion of the ITCZ was located near 16.7 degrees north latitude when averaged over the ten day period and from 15W-35E. This compares with a normal position of 17.6N and a position last year of 18.2N. In the west, from 10W-10E, the ITCZ was located near 16.7 degrees north, compared to the long term mean of around 18.7 degrees north, and a position last year of 19.4N. In the east, from 20E-35E, the ITCZ was located near 17.1N, compared with 16.1N for the mean, and 17.2N for last year. The ITCZ continues to move erratically in the west, while in the east it remains above normal.