

# Current vs Mean Position of the Africa ITCZ

As analyzed by the NOAA Climate Prediction Center

## July 2006 Dekad 2

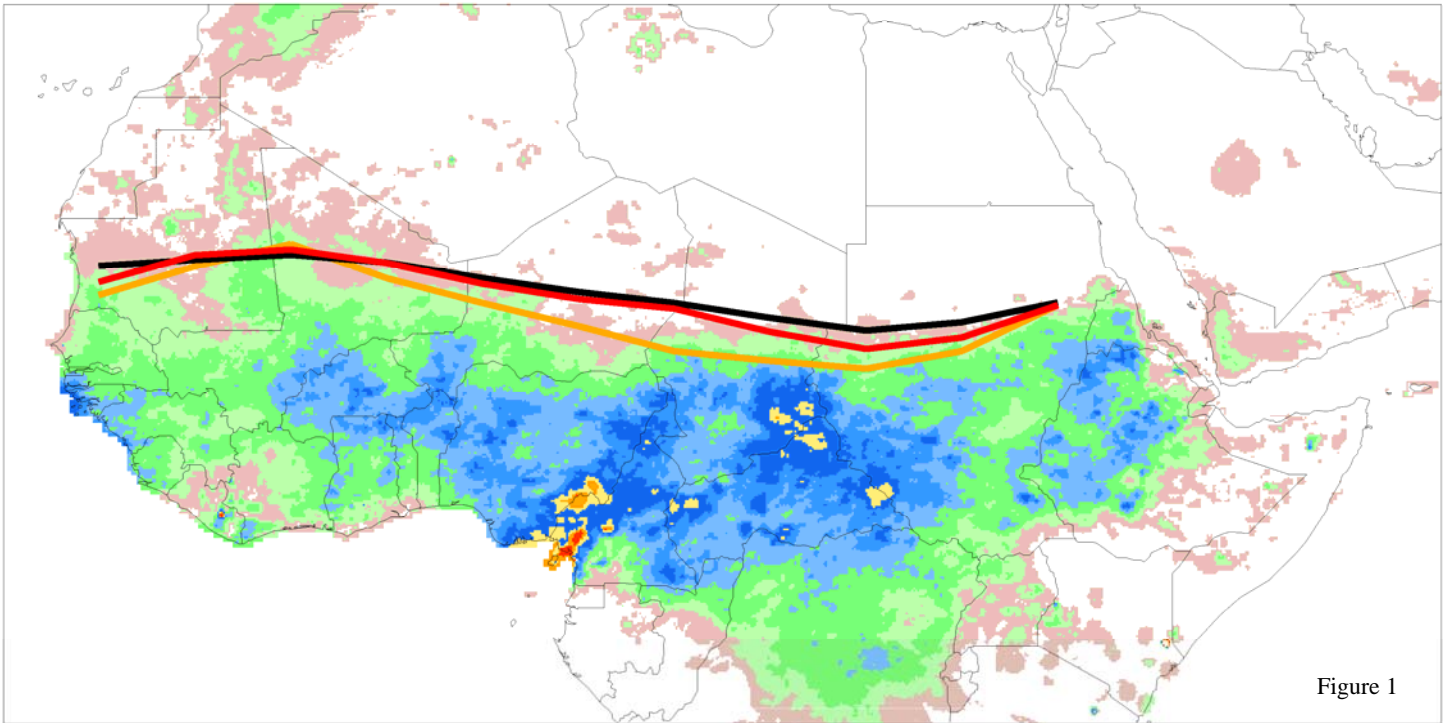


Figure 1

Accumulated Dekadal Precipitation:

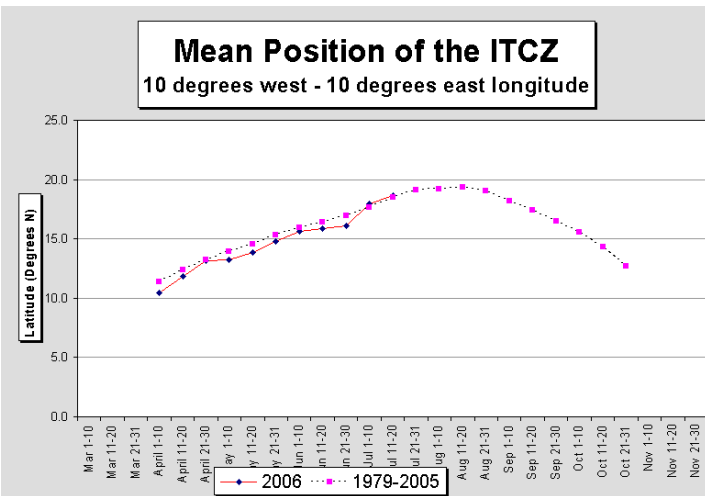
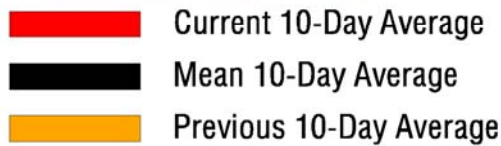


Figure 2

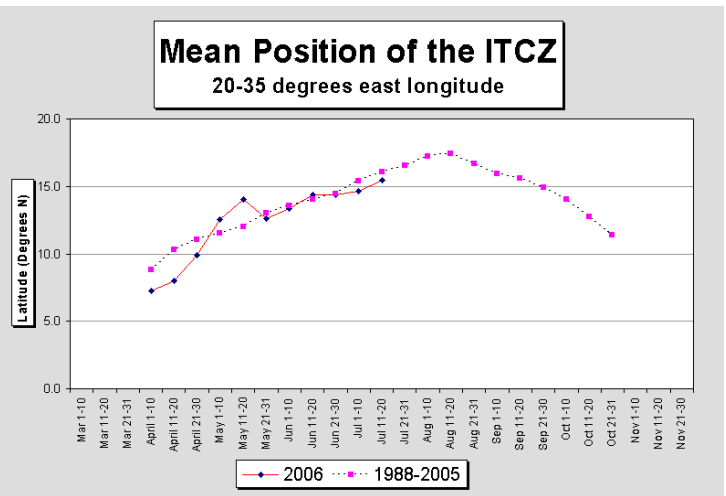


Figure 3

From July 11-20 2006, the African portion of the Intertropical Convergence Zone was located near 17.2 degrees north latitude, compared to the 1988-2005 climatological mean of 17.6 degrees north, and a position last year of 18.2N. This location is 0.8 degrees north from the previous dekad. In the west (10W-10E), the ITCZ was located near 18.6N, compared with a normal position of 18.7N and a position last year of 19.4N. In the east (20-35E), the ITCZ was located near 15.5N, while it is normally located near 16.1N, and was located at 17.2N last year.