

Current vs Mean Position of the Africa ITCZ

As analyzed by the NOAA Climate Prediction Center

July 2007 Dekad 1

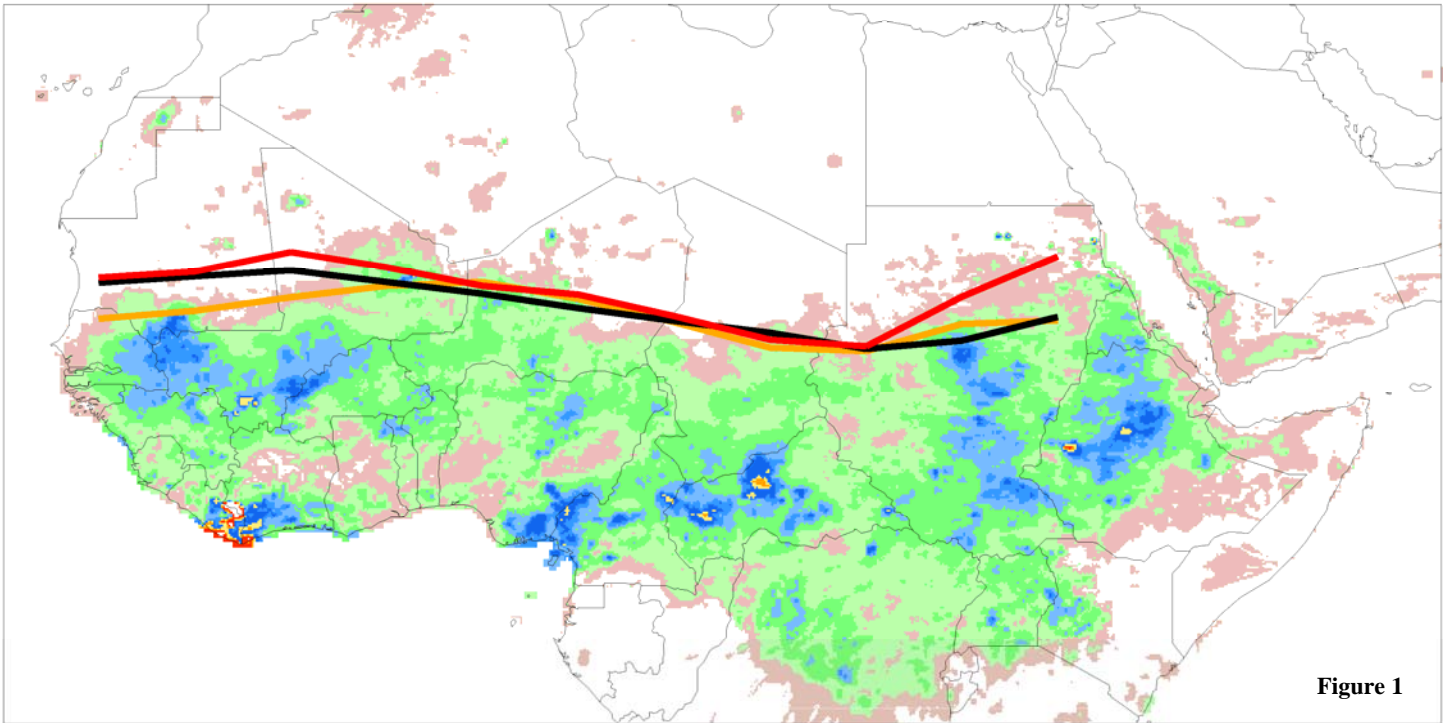
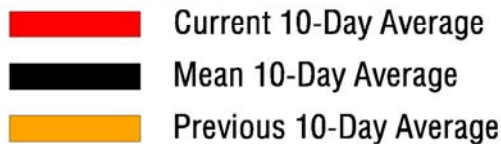


Figure 1

Accumulated Dekadal Precipitation:



Mean Position of the ITCZ
10 degrees west - 10 degrees east longitude

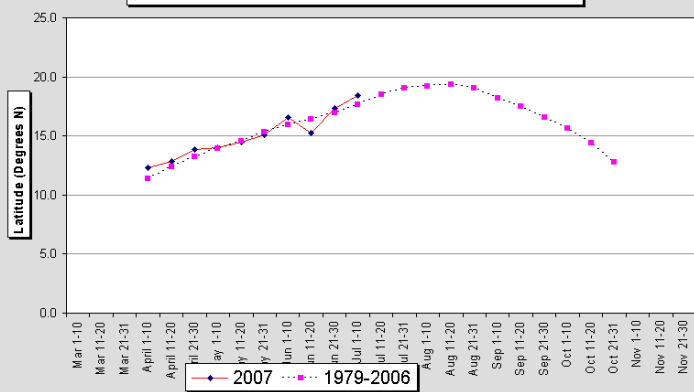


Figure 2

Mean Position of the ITCZ
20-35 degrees east longitude

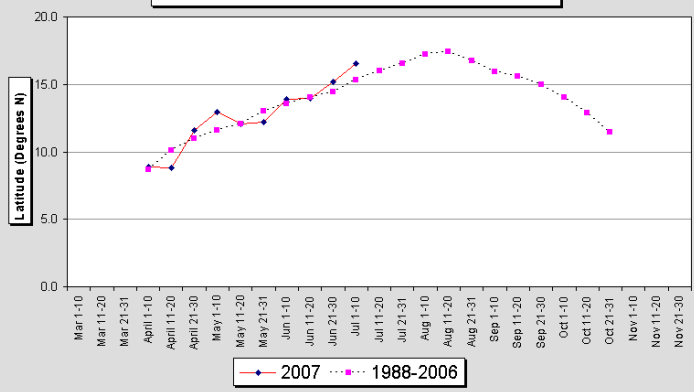


Figure 3

During the period from July 1 - 10, 2007, the African portion of the ITCZ was located near 17.5 degrees north latitude when averaged over the ten day period and from 15W-35E. This compares with a normal position of 16.7N and a position last year of 16.4N. In the west, from 10W-10E, the ITCZ was located near 18.4 degrees north, compared to the long term mean of around 17.8 degrees north, and a position last year of 17.9N. In the east, from 20E-35E, the ITCZ was located near 16.6N, compared with 15.3N for the mean, and 14.7N for last year. The ITCZ has advanced significantly over southern Mauritania and northern Sudan since the third dekad of June which had a 10-day average of 16.3 degrees north.