

# Current vs Mean Position of the Africa ITCZ

As analyzed by the NOAA Climate Prediction Center

## July 2005 Dekad 1

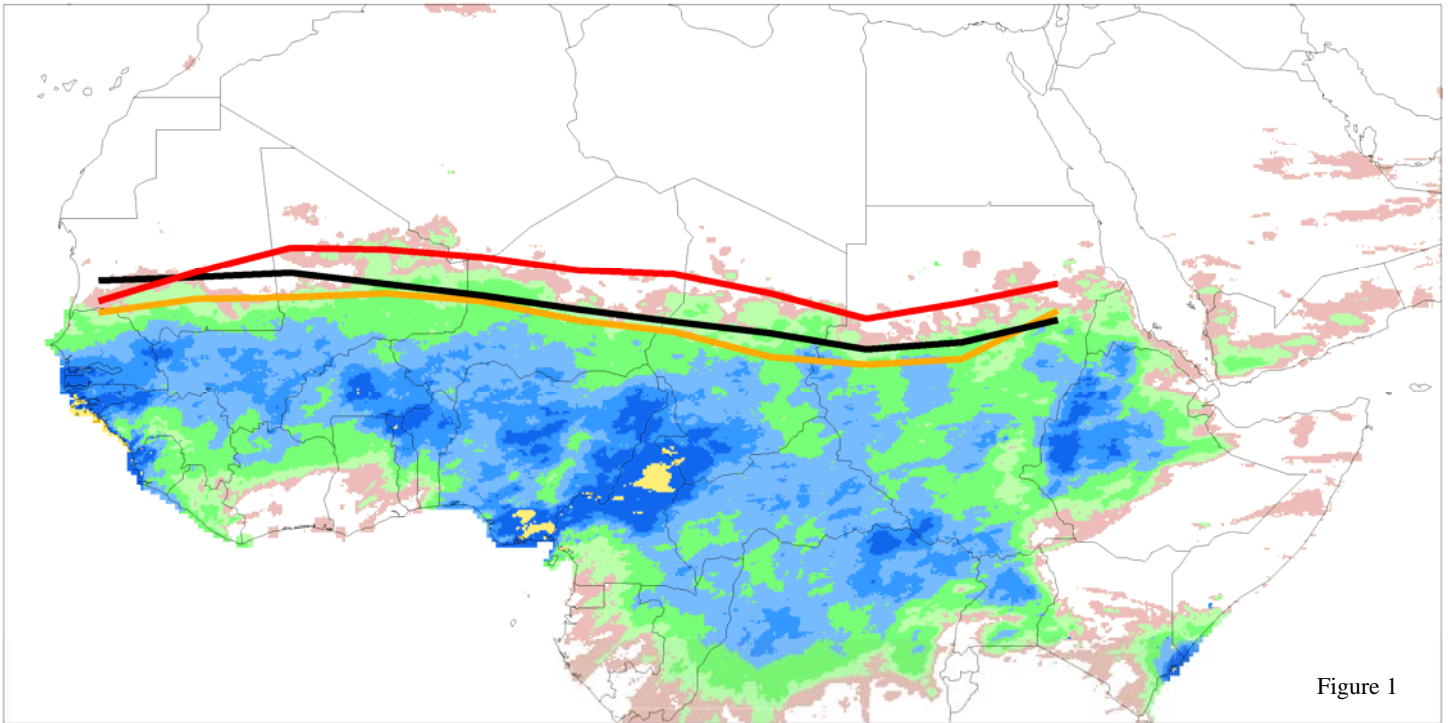


Figure 1

Accumulated Dekadal Precipitation:

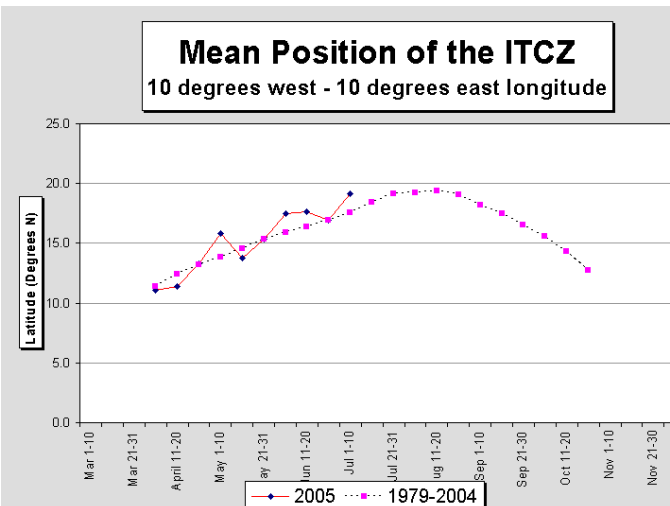
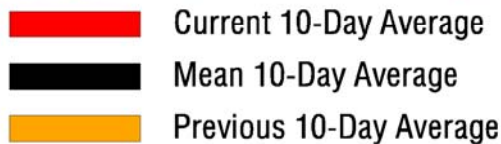


Figure 2

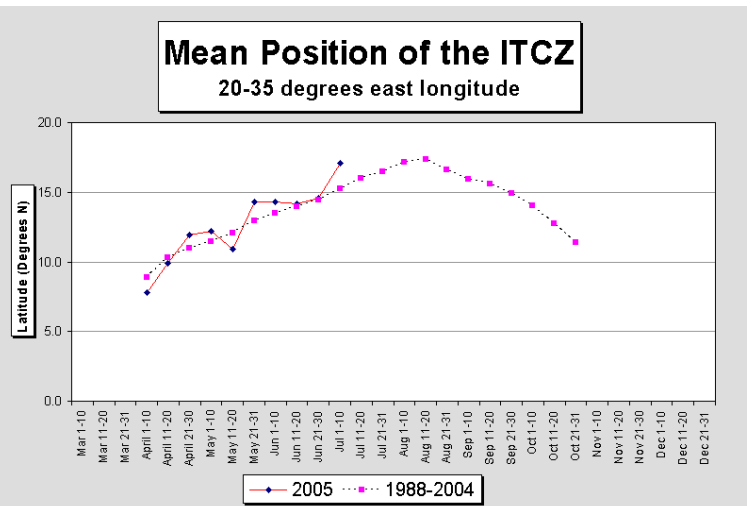


Figure 3

From July 1-10, 2005, the African portion of the ITCZ was located near 18.1 degrees north latitude when averaged over the ten day temporal period and from 15 degrees west to 35 degrees east longitude spatially. As seen in Figure 1, this is well north of the climatological 1988-2004 location of around 16.6 degrees north. This is also slightly northward from last year's position of 17.8 degrees north. The significant northward bias of the ITCZ corresponds very well this period with the anomalously heavy rainfall in much of Sahelian Africa, and this positive rainfall anomaly can be seen in the July 1-10 dekadal ARC product at [http://www.cpc.ncep.noaa.gov/products/fews/AFR\\_CLIM/afr\\_clim.html#dekad](http://www.cpc.ncep.noaa.gov/products/fews/AFR_CLIM/afr_clim.html#dekad) From Figures 2 and 3, it is seen that latest ITCZ positions are well above normal and are actually close to the climatological peak northward extent of the monsoonal oscillation.