

Current vs Mean Position of the Africa ITCZ

As analyzed by the NOAA Climate Prediction Center

August 2006 Dekad 1

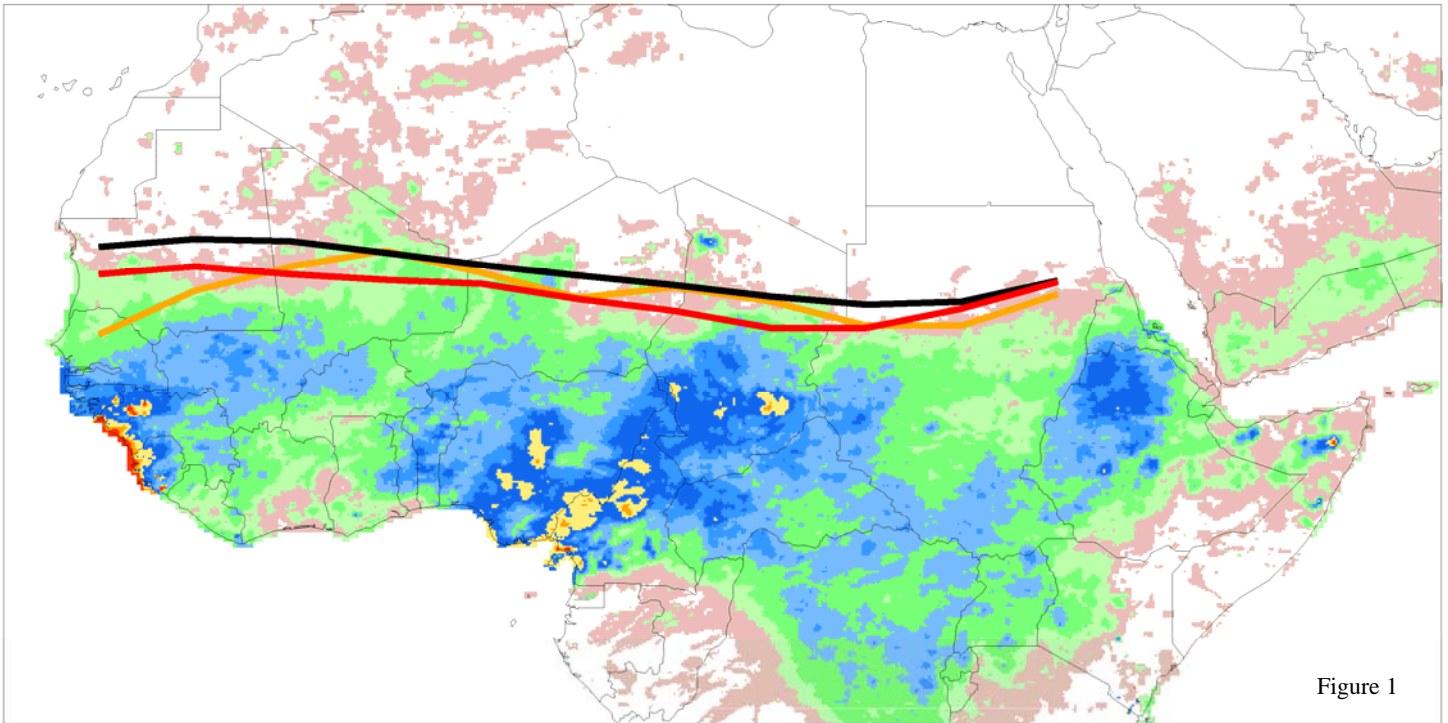
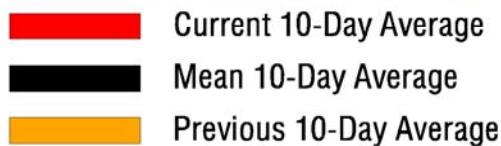


Figure 1

Accumulated Dekadal Precipitation:



Mean Position of the ITCZ
10 degrees west - 10 degrees east longitude

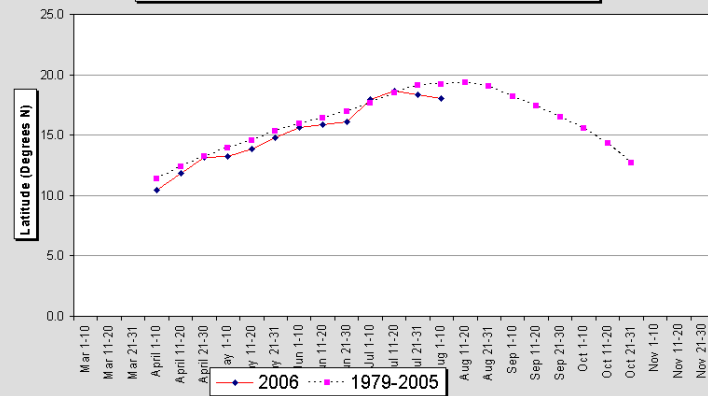


Figure 2

Mean Position of the ITCZ
20-35 degrees east longitude

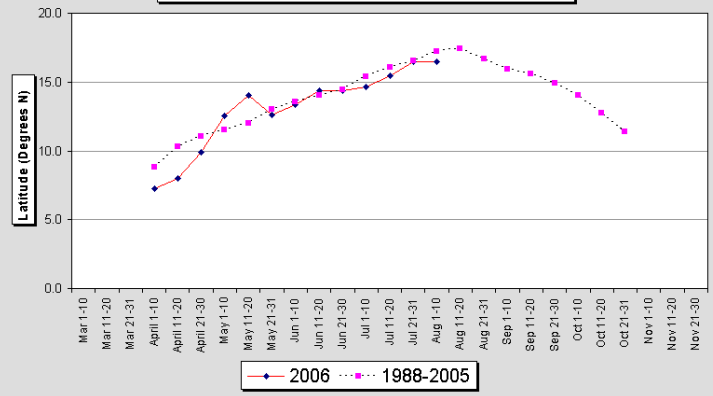


Figure 3

From August 1-10 2006, the African portion of the Intertropical Convergence Zone was located near 17.3 degrees north latitude, or 1.2 degrees south of normal compared to the 1988-2005 climatological mean of 18.5 degrees north. Last year at this time the ITCZ was at 19.0N. In the west (10W-10E), the ITCZ rebounded as has begun to return to a normal position. However, it still remains south of normal throughout most of Africa. In the east (20-35E), the ITCZ has remained closer to normal, especially over Sudan. Currently the eastern portion of the African ITCZ is located near 17.3N, while it is normally located near 18.6N, and was located at 18.6N last year.