

Current vs Mean Position of the Africa ITF

As analyzed by the NOAA Climate Prediction Center

April 2010 Dekad 3

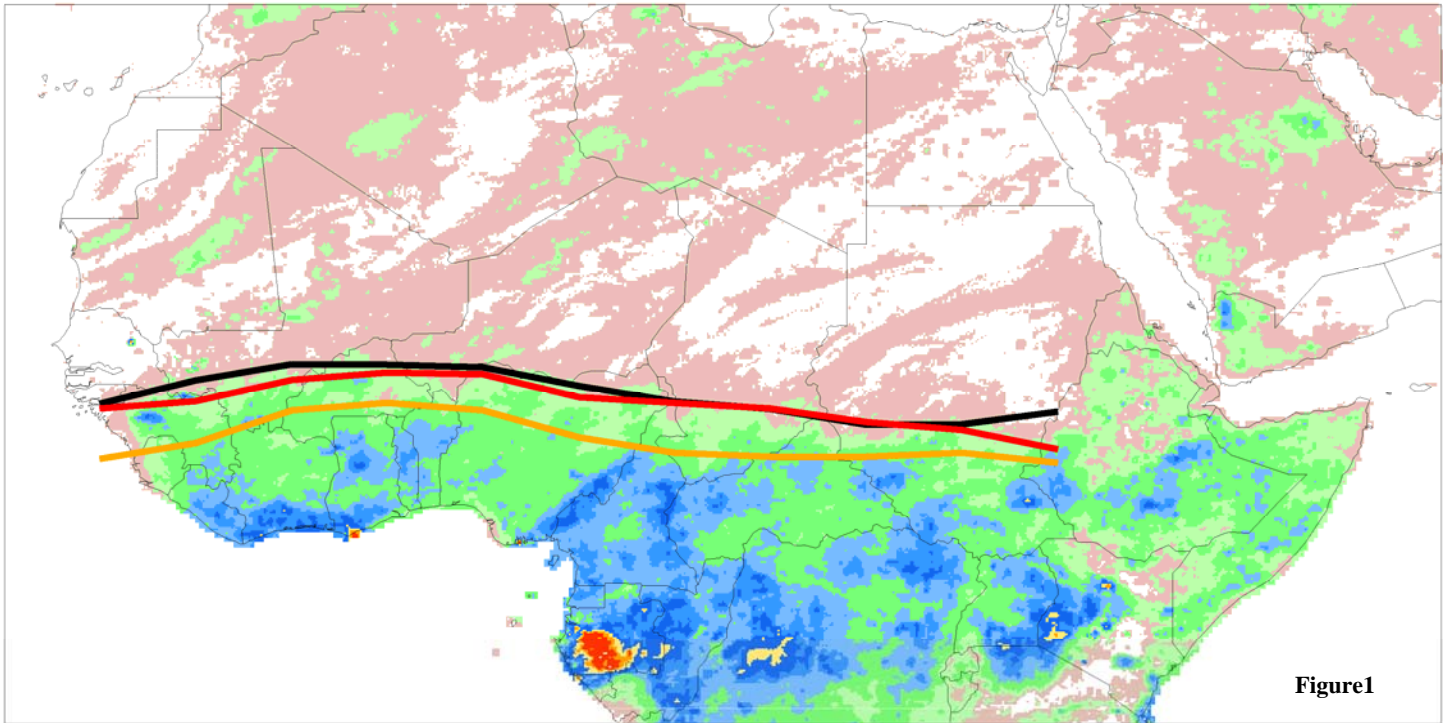
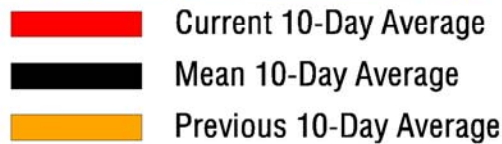


Figure 1

Accumulated Dekadal Precipitation:



Mean Position of the ITF
10 degrees west - 10 degrees east longitude

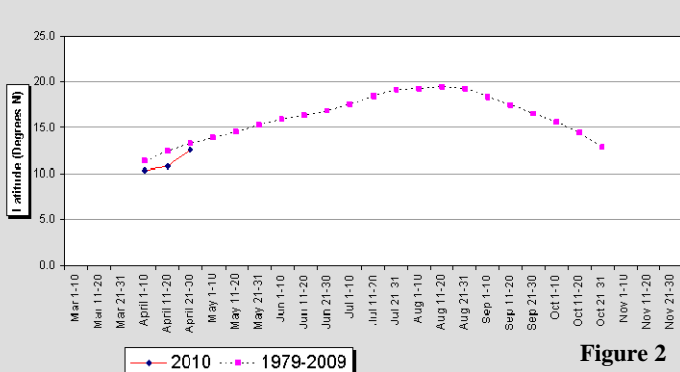


Figure 2

Mean Position of the ITF
20-35 degrees east longitude

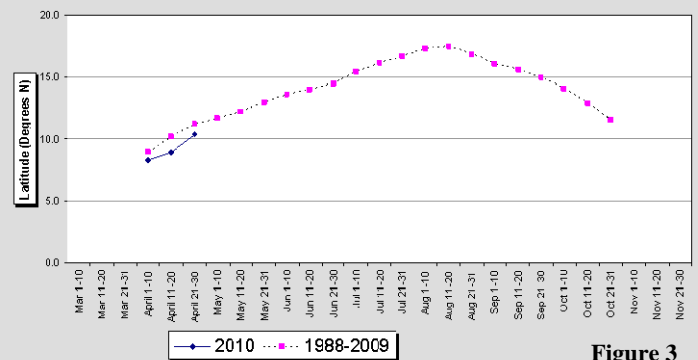


Figure 3

During the period from April 21-30, 2010, the ITF experienced a positional recovery relative to the climatological mean. The mean western portion of the ITF during the last dekad was approximated at 12.6N. Although the western position of the ITF remains southerly than the climatological mean position (13.3N) for this time of the year, it is now closest to the climatological mean position since the start of April. The eastern portion of the ITF also continued to experience a considerable northward advancement during the last ten days, and remains near normal throughout many areas over Chad and Sudan. The greatest positional anomaly has been observed in the far eastern portion of the ITF over Ethiopia. Figure 1 reflects the current ITF position relative to its climatological mean and its previous placement during the middle of April. Figures 2 and 3 illustrate that the eastern and western positions of the ITF remain more southerly than normal, but have shifted closer to the climatological mean position for late April.