

# Current vs Mean Position of the Africa ITCZ

As analyzed by the NOAA Climate Prediction Center

## April 2007 Dekad 3

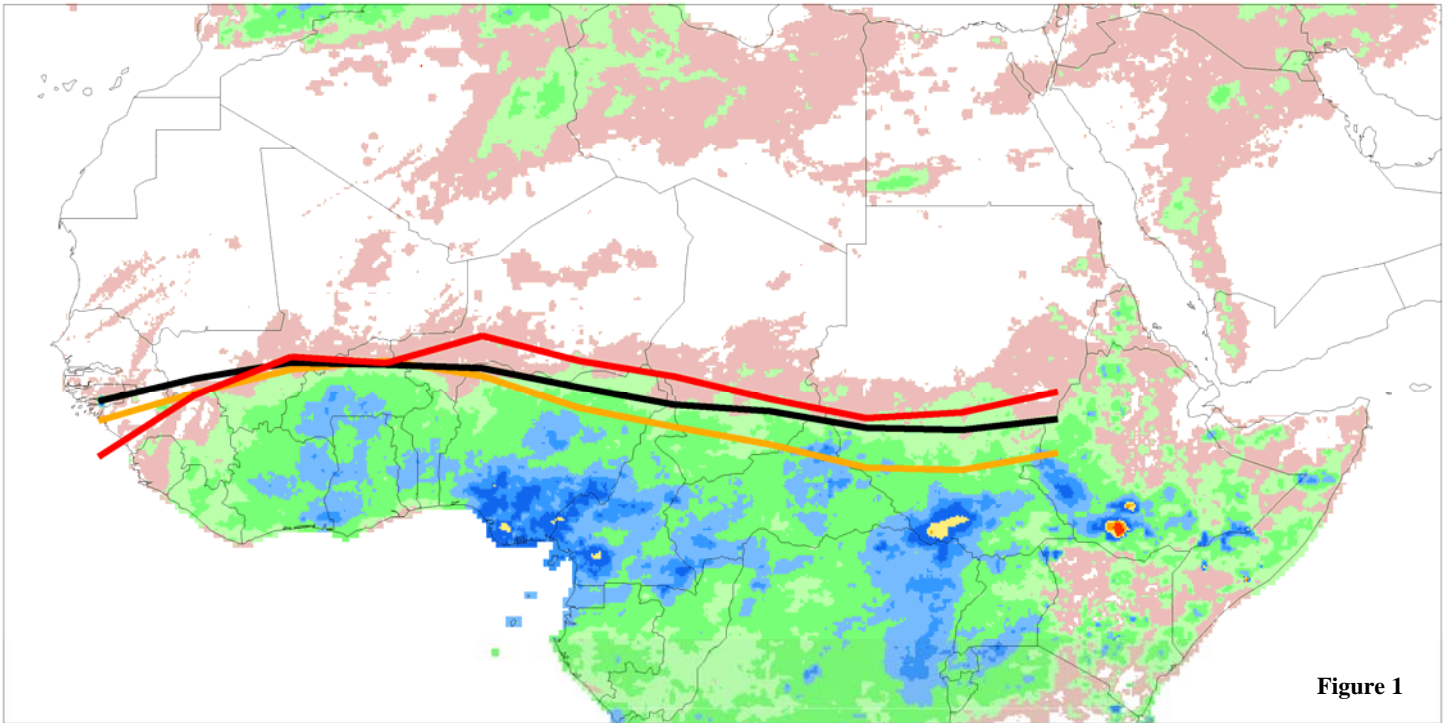
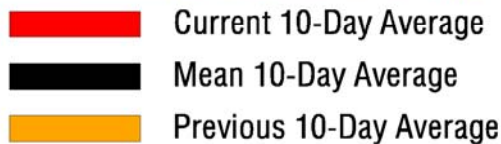


Figure 1

Accumulated Dekadal Precipitation:



**Mean Position of the ITCZ**  
10 degrees west - 10 degrees east longitude

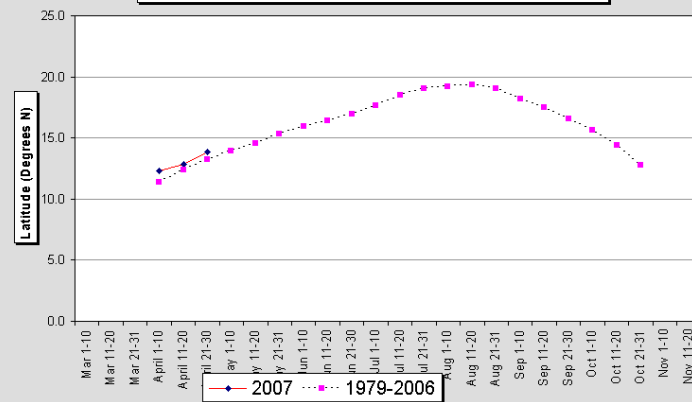


Figure 2

**Mean Position of the ITCZ**  
20-35 degrees east longitude

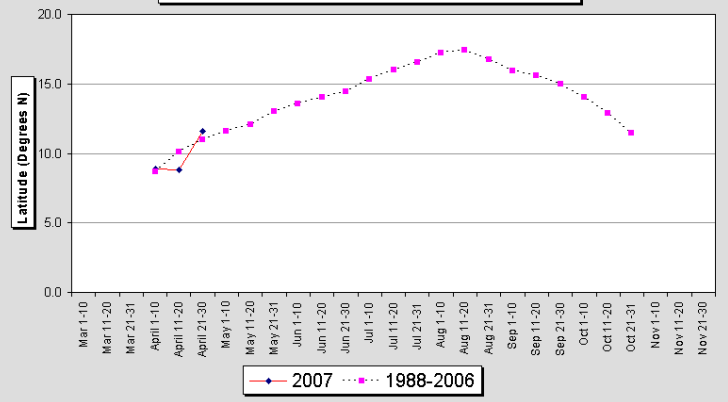


Figure 3

During the period from April 21-30 2007, the African portion of the ITCZ was located near 12.5 degrees north latitude when averaged over the ten day period and from 15W-35E. This compares with a normal position of 12.1N and a position last dekad of 11.0N. From figure 1, it is obvious that much of the central and eastern region saw the ITCZ move significantly to the north during the previous dekad. In the west (10W-10E) the ITCZ was located near 13.8N compared with a normal position of 13.3N. In the east (20E-35E), the ITCZ was located near 11.6N compared with 10.7N normally.