

# Current vs Mean Position of the Africa ITCZ

As analyzed by the NOAA Climate Prediction Center

## April 2007 Dekad 2

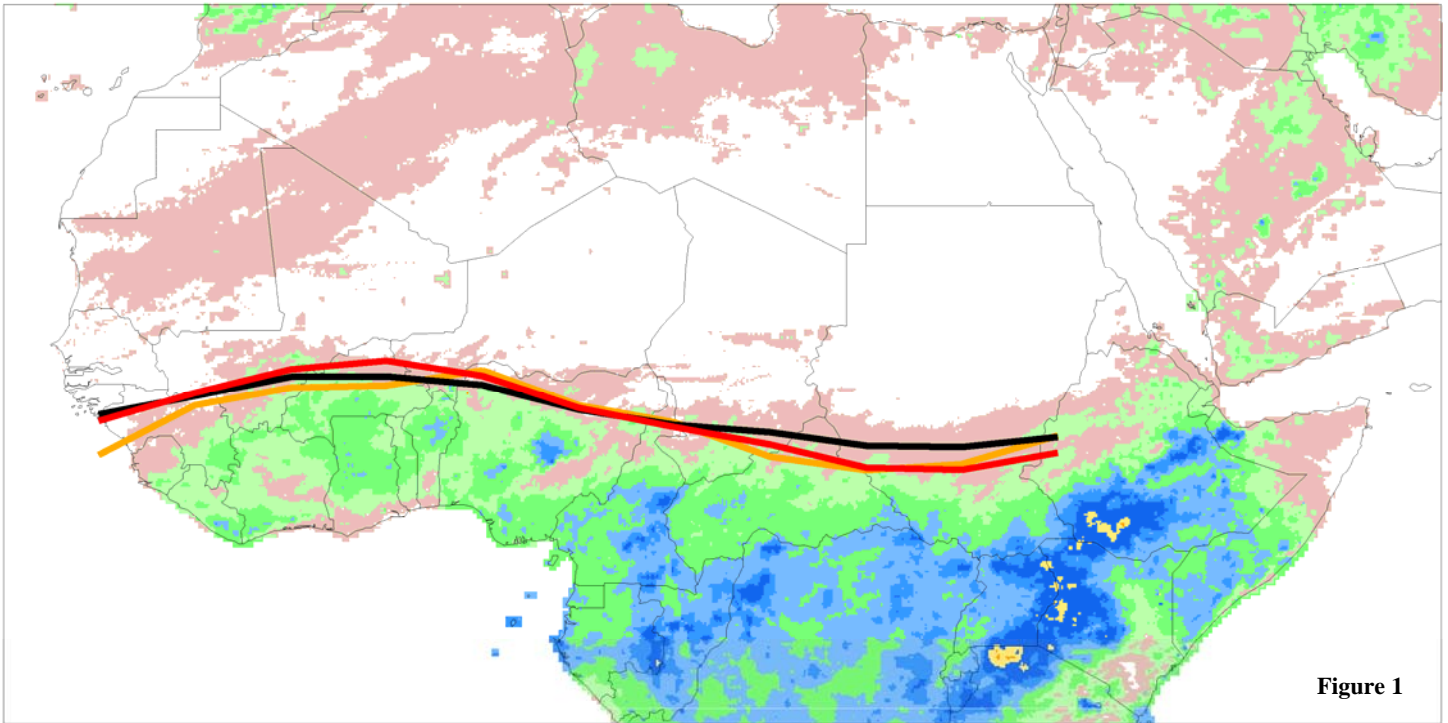
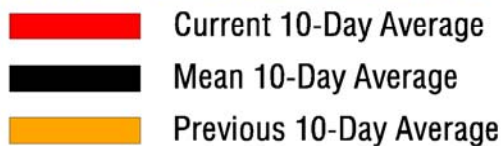


Figure 1

Accumulated Dekadal Precipitation:



**Mean Position of the ITCZ**  
10 degrees west - 10 degrees east longitude

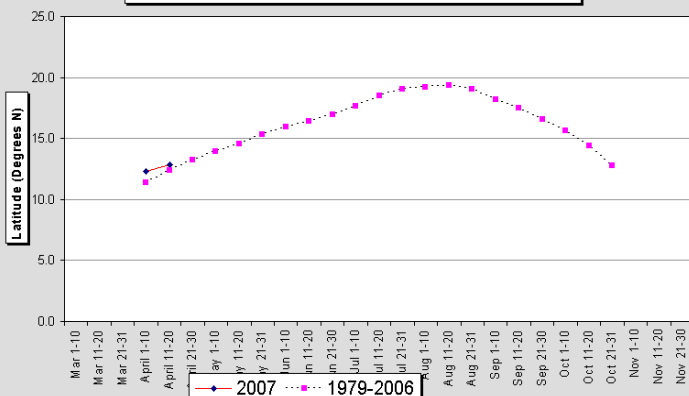


Figure 2

**Mean Position of the ITCZ**  
20-35 degrees east longitude

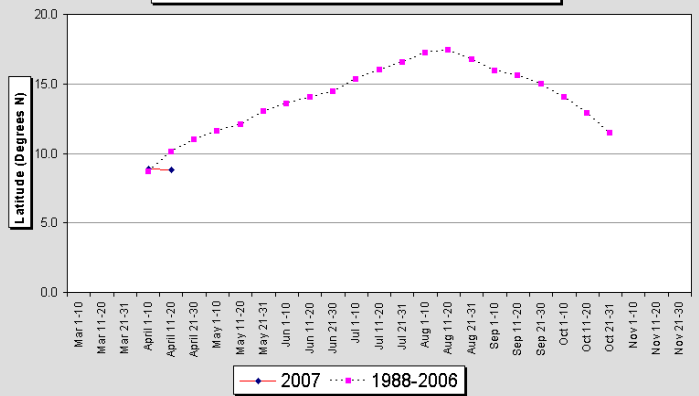


Figure 3

During the period from April 11-20, 2007, the African portion of the ITCZ was located near 11.0 degrees north, when averaged over the entire ten day period and over the domain from 15 degrees west to 35 degrees longitude. This compares to a normal position of around 11.2 N, and a position during the same dekad of 2006 of 10.2 north. See Figure 1. A frontal system pushed through western Africa during the past week, helping to bring the ITCZ to the north in areas around Burkina Faso, though regions to the west experienced little movement from the past dekad. In the west (from 10W-10E), the ITCZ was located near 12.8 degrees north latitude, compared with a normal position of 12.4 north, and a position last year of 11.8 north. The east (20E-35E) saw the ITCZ located at around 8.8 degrees north, almost a degree south of its climatologically normal position from 1988-2006.