

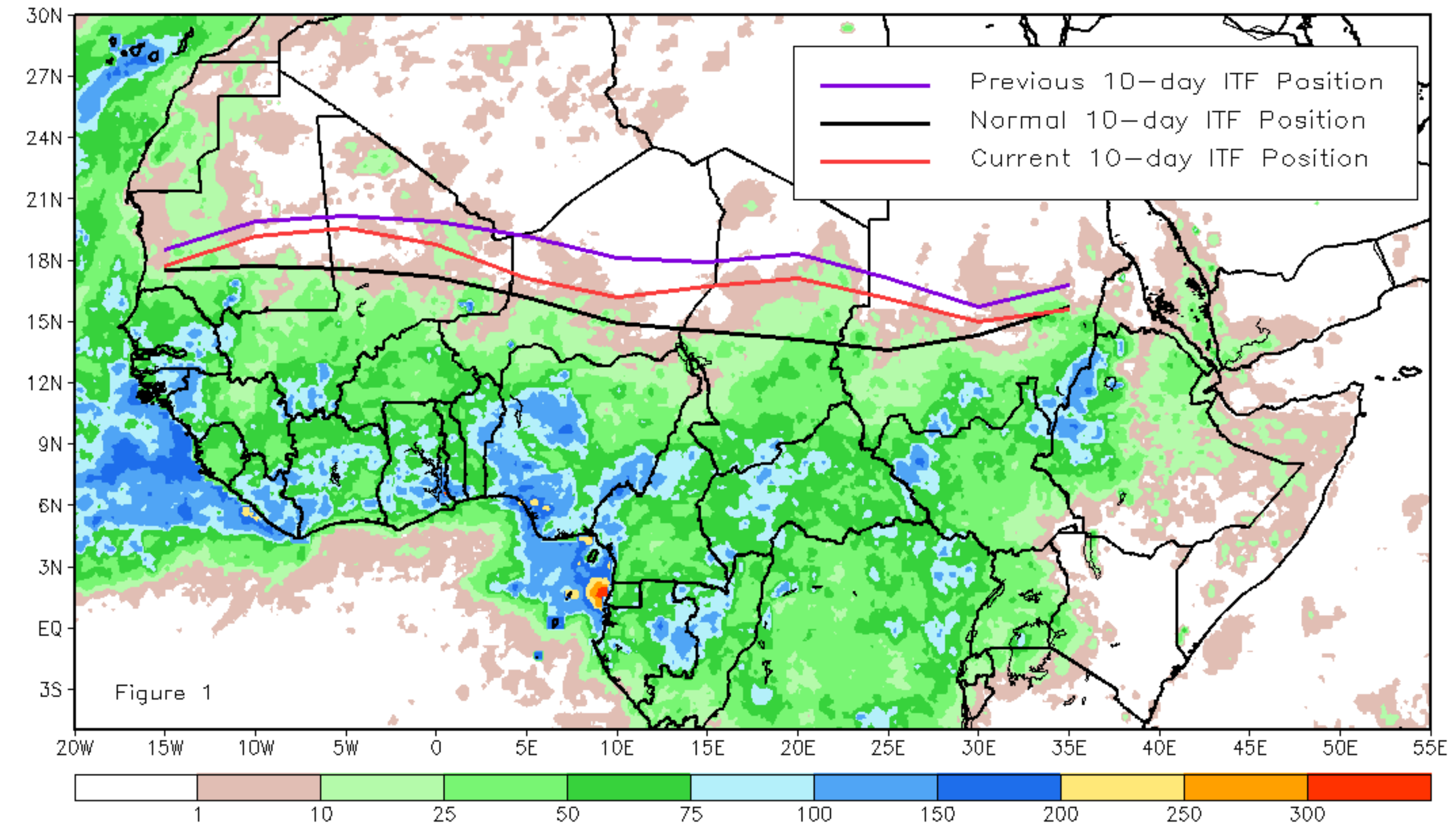


CPC Africa Desk InterTropical (ITF) Front Analysis September 2022, Dekad 3

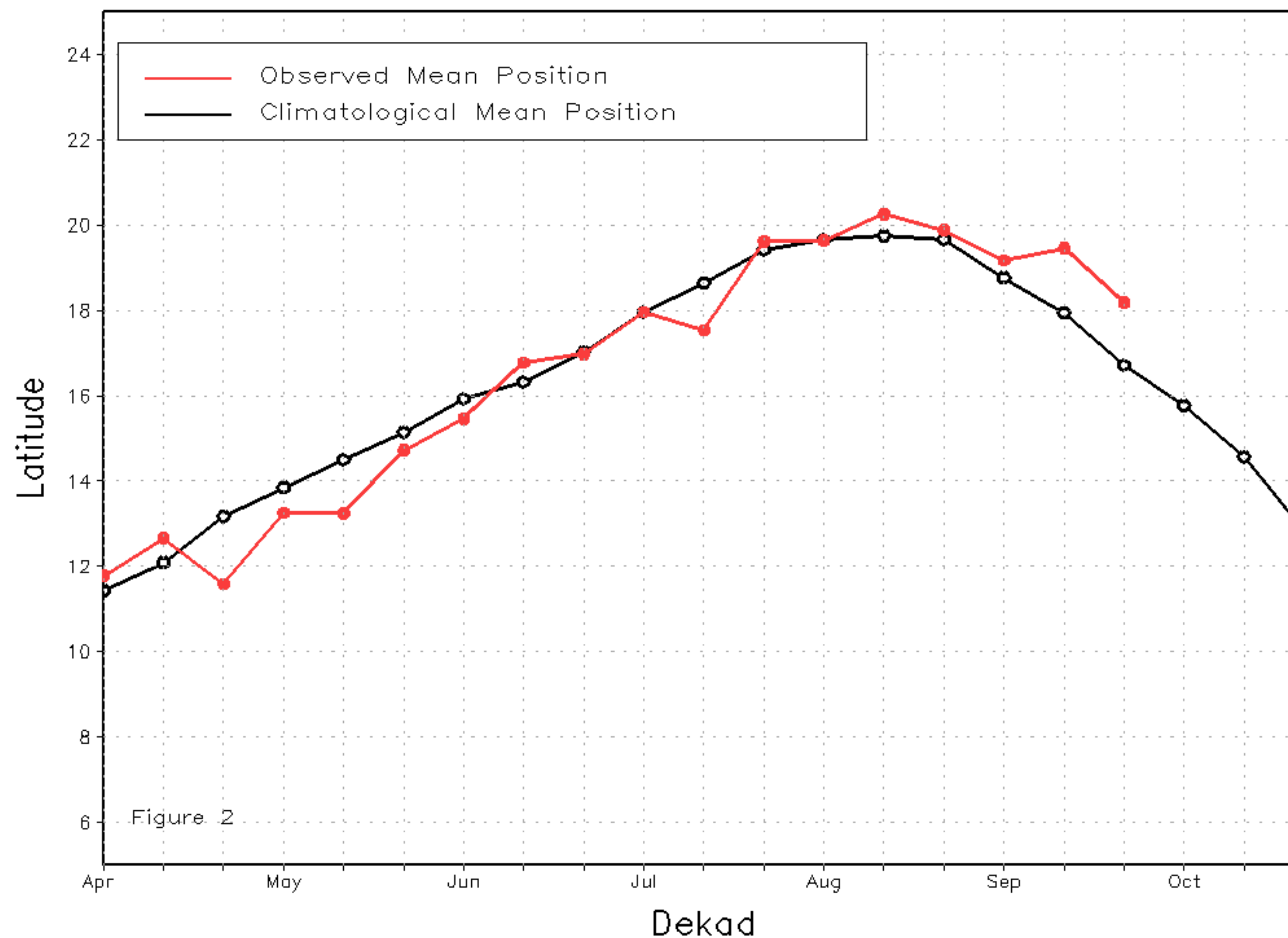
Discussion:

From 21-30 September, the ITF moved south relative to its previous position. Comparing the ITF currently with climatology, the current ITF had an anomalous northerly position. The western (10W-10E) portion of the ITF was located approximately at 18.2N, which was above the climatology position by 1.5 degree. The ITF climatological position by 1.5 degree. Figure 1 displays the current position of the ITF relative to the long-term average position during the 3rd dekad of September and its previous position during the 2nd dekad of September. Figures 2 and 3 are time series, illustrating the latitudinal values of the western and eastern portions of the ITF, respectively, and their seasonal evolutions since the beginning of April 2022.

Current vs. Normal Dekadal ITF Position
and RFE Accumulated Precipitation (mm)
September 2022, Dekad 3



Mean Western Portion of the ITF: Averaged 10W to 10E
As of: September 2022, Dekad 3



Mean Eastern Portion of the ITF: Averaged 20E to 35E
As of: September 2022, Dekad 3

