



CPC Africa Desk InterTropical (ITF) Front Analysis

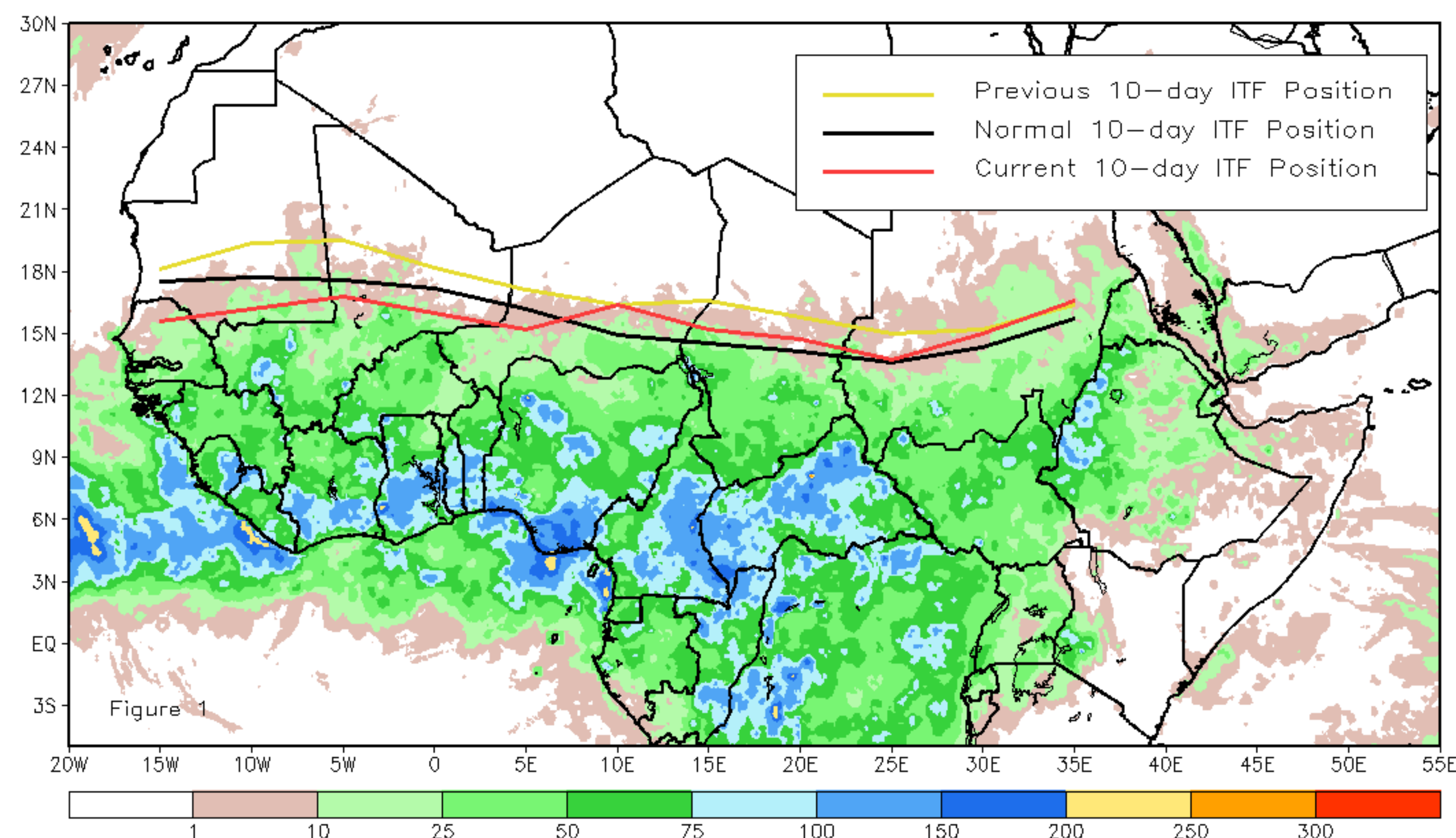
September 2021, Dekad 3

Discussion:

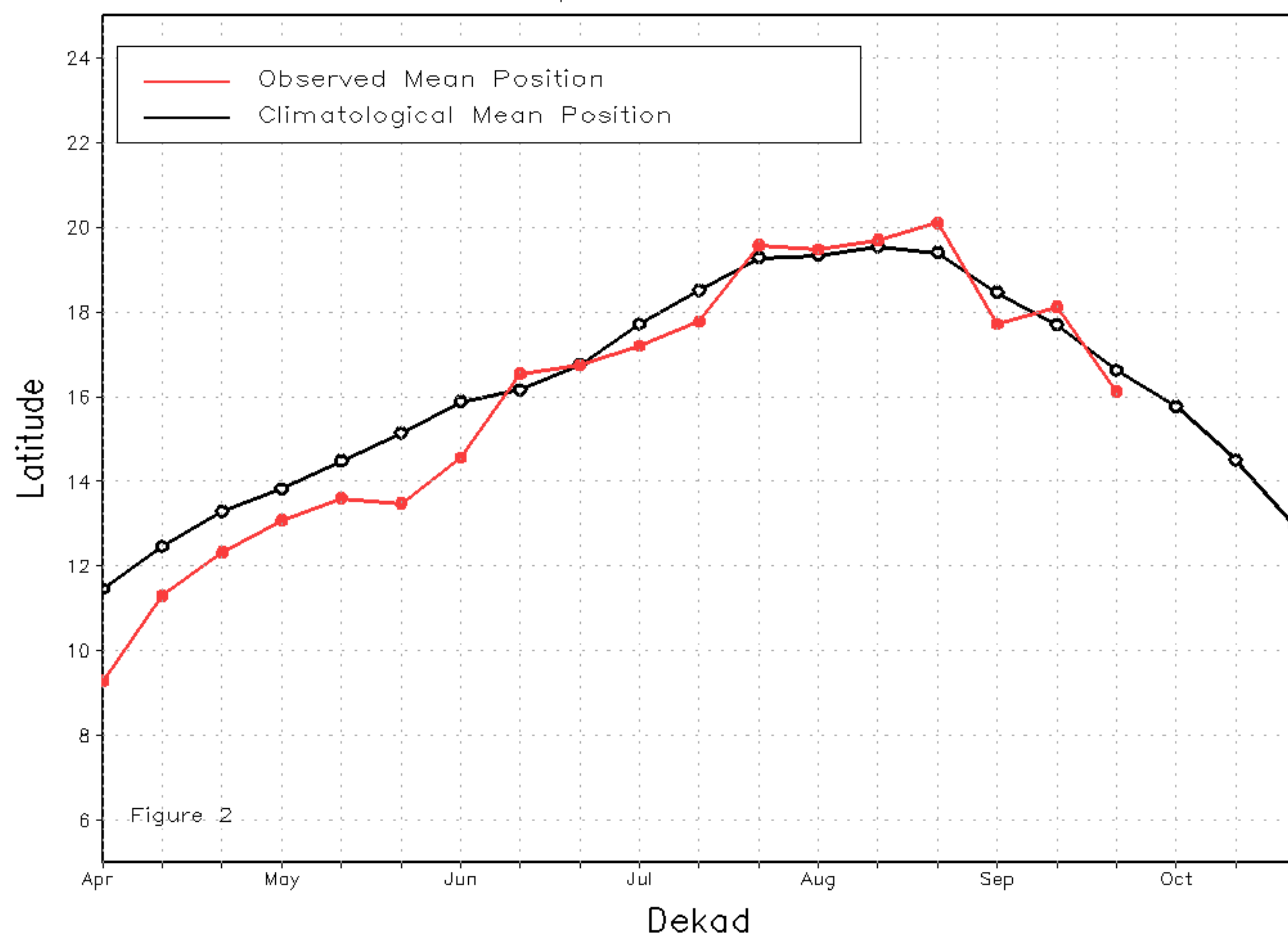
From 21-30 of September, the ITF moved further south compared to its previous dekad. The western (10W-10E) portion of the ITF was located approximately at 16.1N, which was south to the climatological position centered at 16.7N. This position of the ITF explains the decrease of rainfall across the northern and central part of Senegal, and southern Mauritania. The eastern (20E-35E) portion of the ITF was located at 15.0N, which was north to the climatological position centered at 14.4N. It explains the above normal rainfall registered across northwestern Ethiopia, central Chad and eastern Sudan where rainfall should be seasonable at this time of the year. Figure 1 shows the current position of the ITF relative to the long-term average position during the 3rd dekad of September and its previous position during the 2nd dekad of September. Figures 2 and 3 are time series, illustrating the latitudinal values of the western and eastern portions of the ITF, respectively, and their seasonal evolutions since the beginning of April, 2021.

Current vs. Normal Dekadal ITF Position
and RFE Accumulated Precipitation (mm)

September 2021, Dekad 3



Mean Western Portion of the ITF: Averaged 10W to 10E
As of: September 2021, Dekad 3



Mean Eastern Portion of the ITF: Averaged 20E to 35E
As of: September 2021, Dekad 3

