



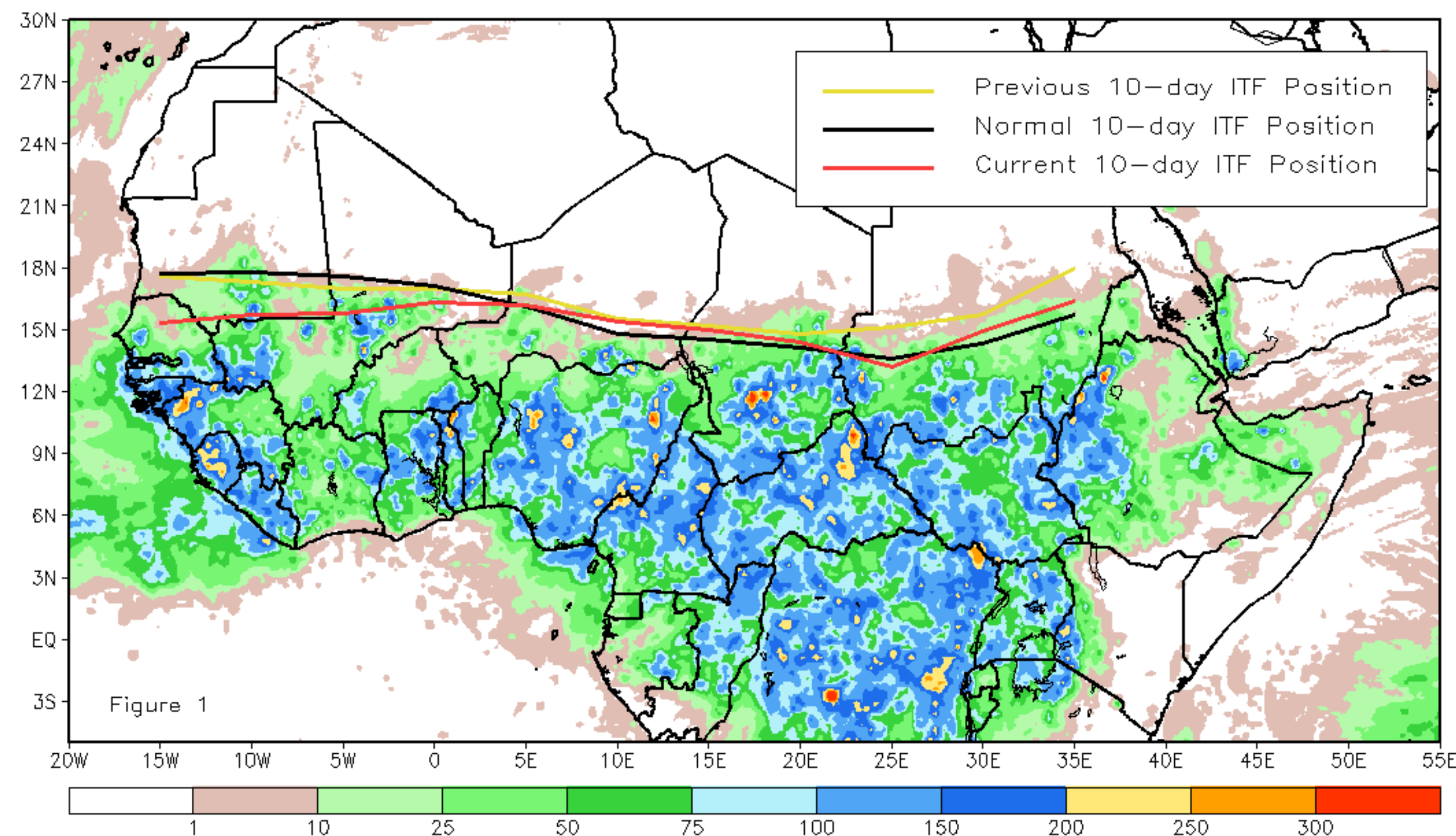
CPC Africa Desk InterTropical (ITF) Front Analysis

September 2020, Dekad 3

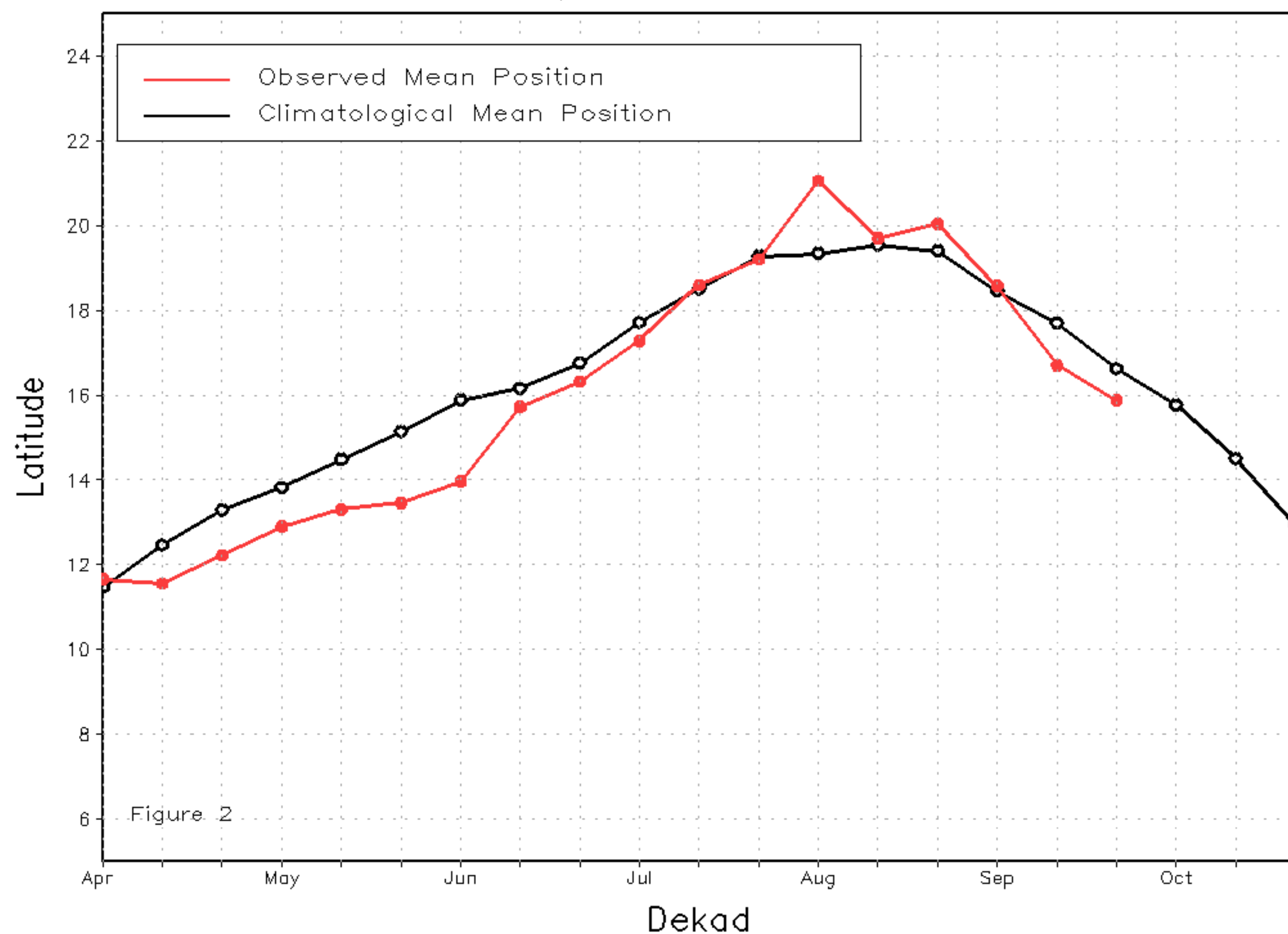
Discussion:

From September 21-30, the ITF has moved slightly southward compare to the previous dekad. The western part, between 15W-5E has moved farther to the south compared to the climatological position which could explain the end of rainfall over Mauritania and the northern part of Senegal. In contrast, the eastern part (between 25E-35E) is along the climatological position which could explain the seasonal rainfall over the central and southern part of Chad and Sudan. The mean eastern (20E-35E) portion of the ITF was located at 14.7N, which was well to the north of the mean position by 0.3 degrees. The mean western (10W-10E) portion of the ITF was located at 15.9, which was located to the south of the mean position by 0.8 degrees. Figure 1 shows the current position of the ITF relative to the climatological position during the 3rd dekad of September and its previous position during the 2nd dekad of September. Figures 2 and 3 are time series, illustrating the latitudinal values of the western and eastern portions of the ITF, respectively, and their seasonal evolutions since April, 2020.

Current vs. Normal Dekadal ITF Position
and RFE Accumulated Precipitation (mm)
September 2020, Dekad 3



Mean Western Portion of the ITF: Averaged 10W to 10E
As of: September 2020, Dekad 3



Mean Eastern Portion of the ITF: Averaged 20E to 35E
As of: September 2020, Dekad 3

