



# CPC Africa Desk InterTropical (ITF) Front Analysis

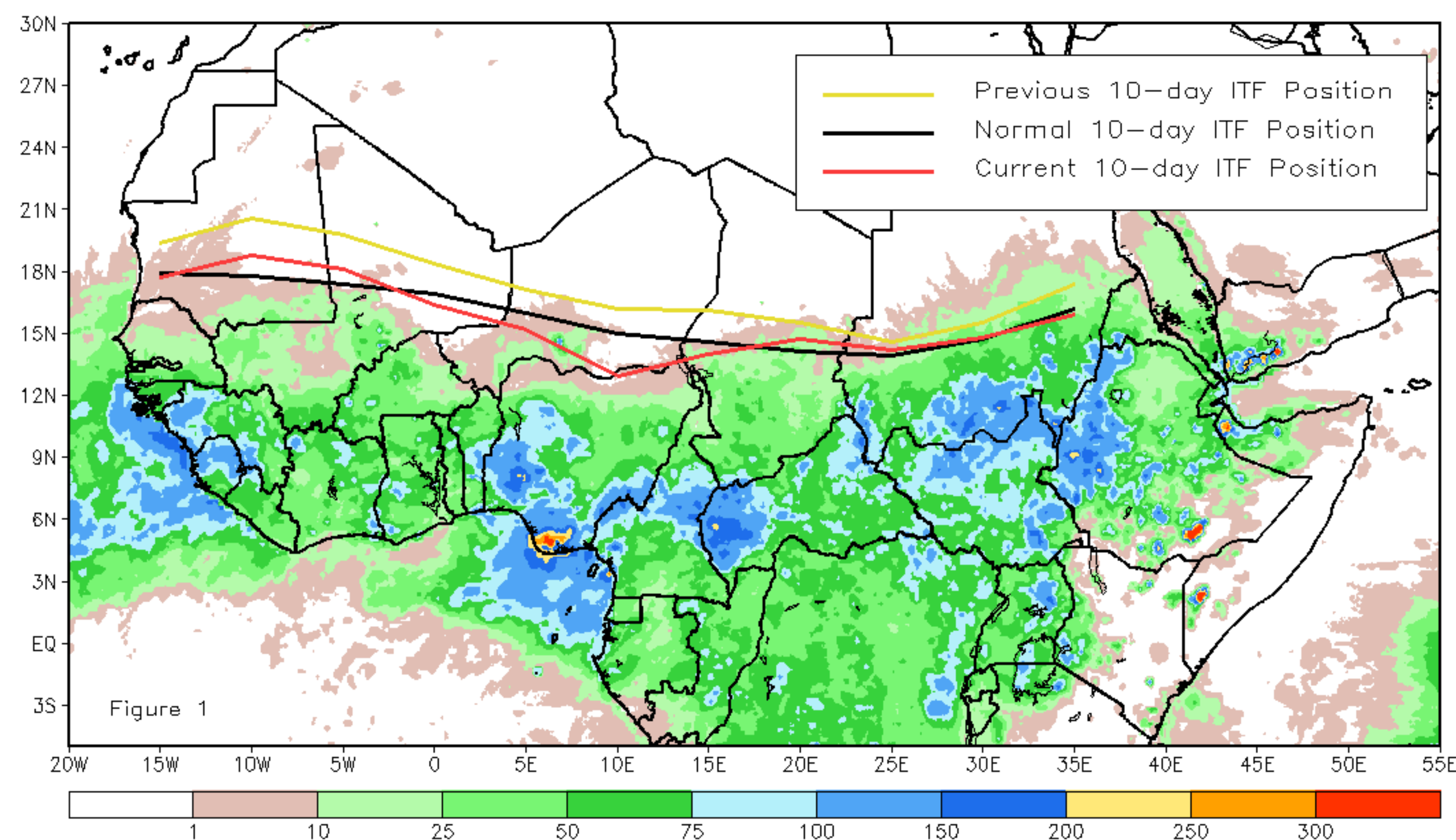
## September 2019, Dekad 3

### Discussion:

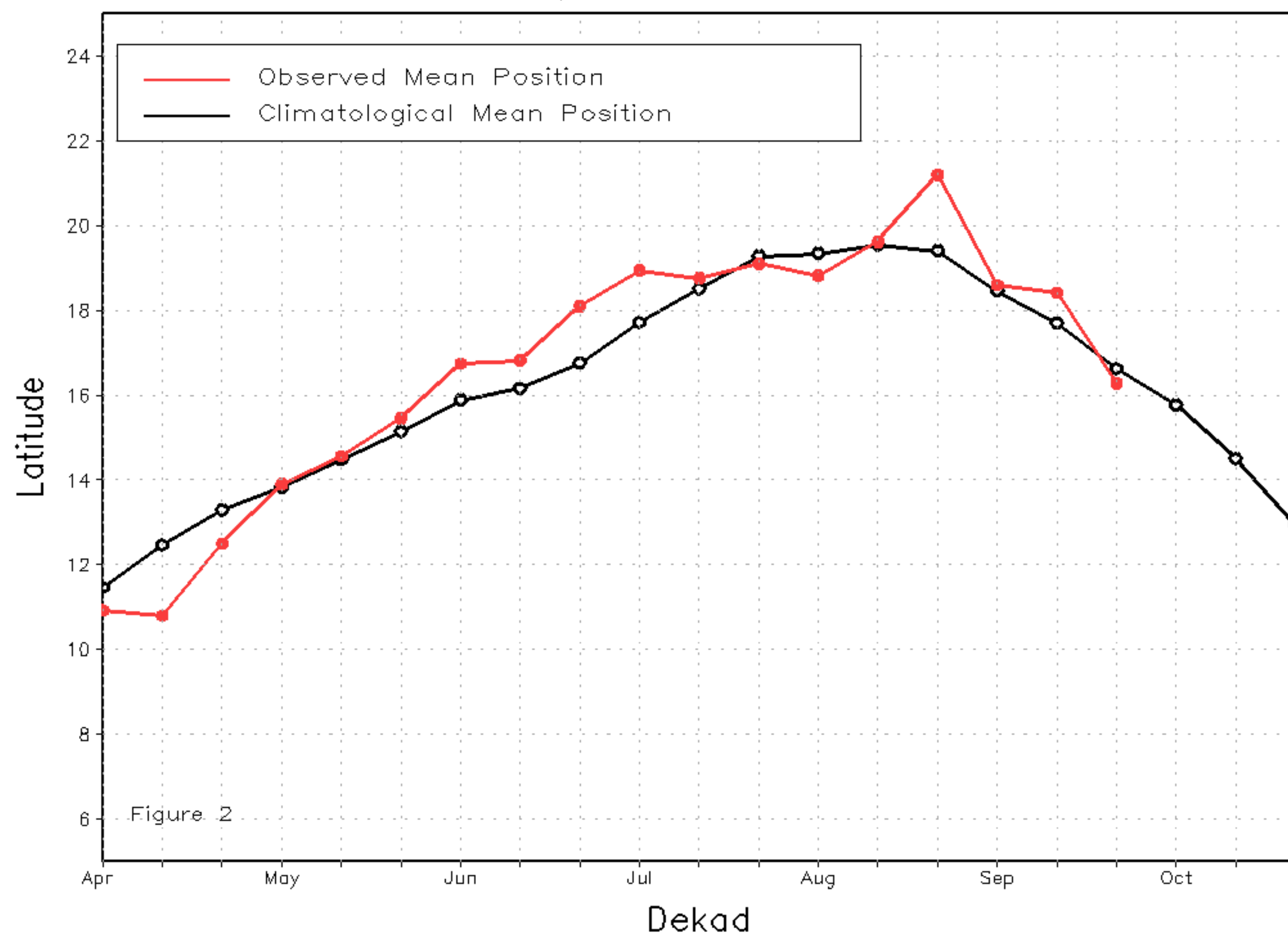
From September 21-30, most of the ITF location is variable relative to its normal position, but is steadily moving south along with the seasonal monsoon. The mean position of the western half of the ITF between 10W-10E is approximated at 16.3 degrees N, which represents a large southward shift of 2.1 degrees compared to the previous dekad. While the ITF is near or north of normal in far-western Africa, it dips sharply below normal over Niger, diminishing rainfall in Niger and Nigeria. The mean position of the east portion of the ITF Between 20E-35E is 14.9 degrees N, which represents a southward shift of nearly 1 degree compared to the previous dekad. This puts the ITF location very close to the normal position of 14.7 degrees N. Even with the quite modest northward displacement of the ITF in the east, rainfall has been well-above normal over Sudan and South Sudan. Figure 1 shows the current position of the ITF relative to the long-term average position during the 3rd dekad of September and its previous position during the 2nd dekad of September. Figures 2 and 3 are time series, illustrating the latitudinal values of the western and eastern portions of the ITF, respectively, and their seasonal evolutions since April, 2019.

Current vs. Normal Dekadal ITF Position  
and RFE Accumulated Precipitation (mm)

September 2019, Dekad 3



Mean Western Portion of the ITF: Averaged 10W to 10E  
As of: September 2019, Dekad 3



Mean Eastern Portion of the ITF: Averaged 20E to 35E  
As of: September 2019, Dekad 3

