



CPC Africa Desk InterTropical (ITF) Front Analysis

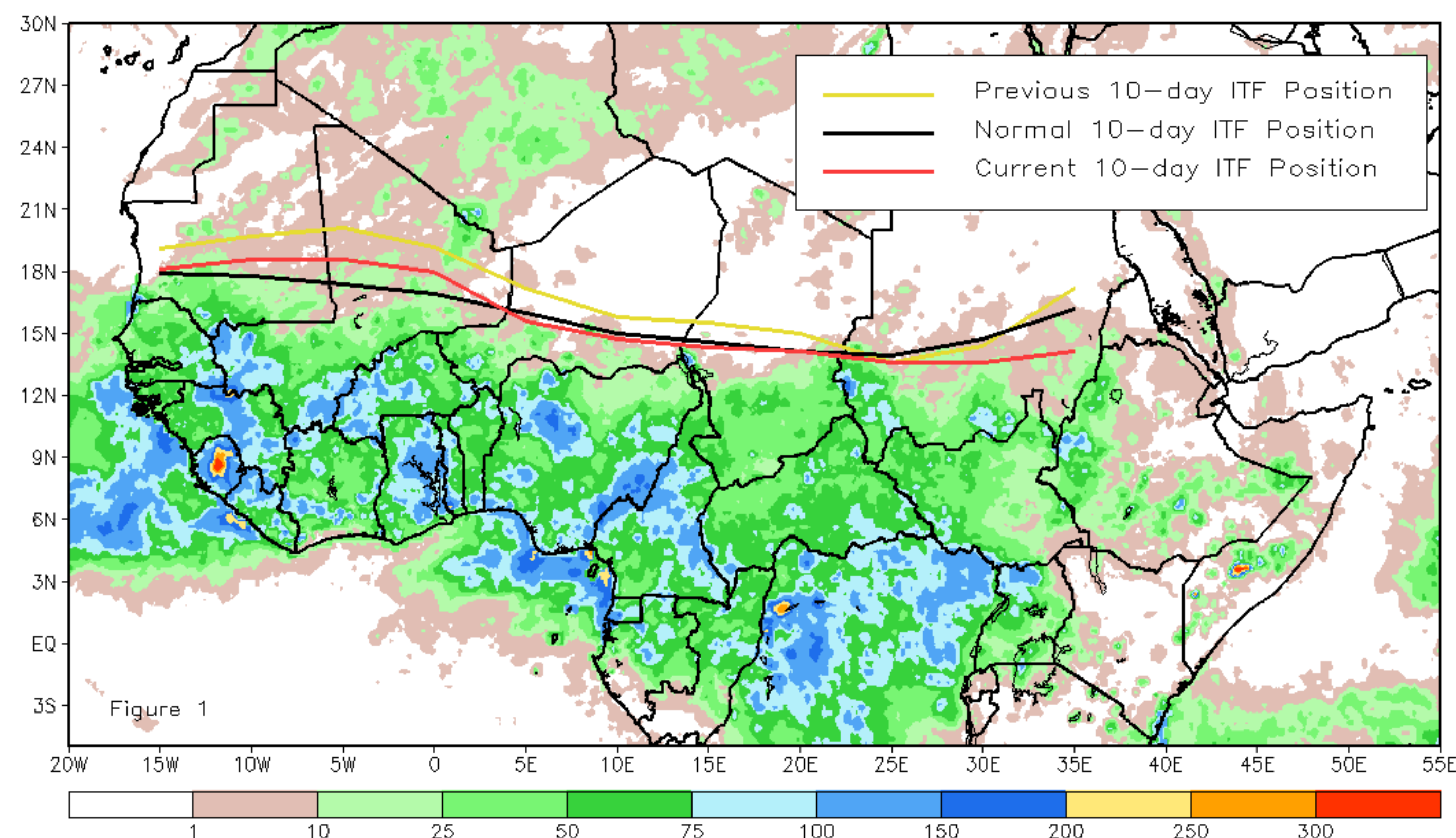
September 2018, Dekad 3

Discussion:

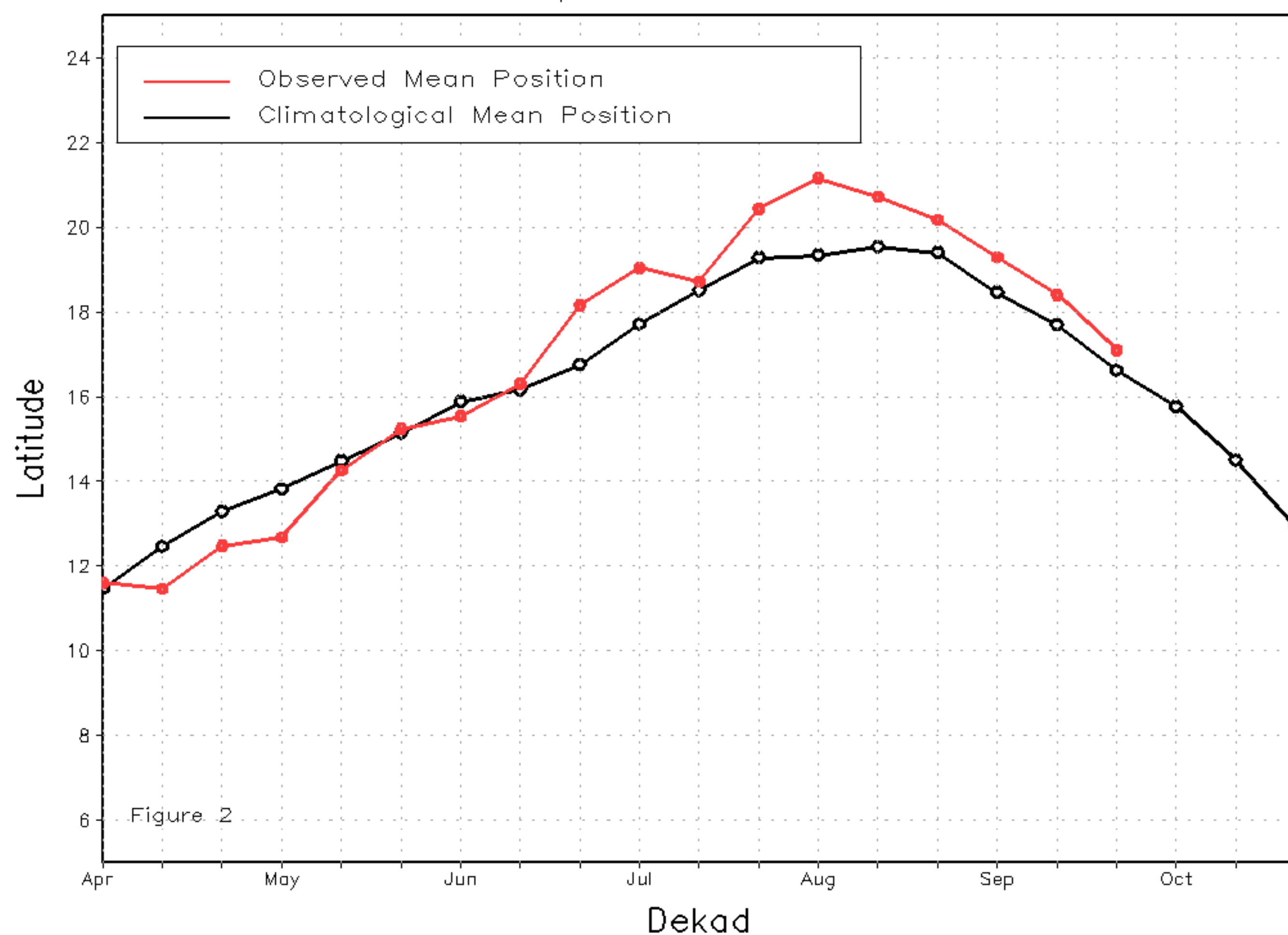
From September 21-30, the ITF continued its equatorward retreat but maintained its above-average position throughout many West African countries. The mean western (10W-10E) portion of the ITF was approximated at 17.1N, and remained anomalously north of the normal position by 0.5 degree. This marks the 11th consecutive dekad where the western portion of the ITF remained above-climatology, and was associated with a prolonged period of broad low-level moisture extending from Guinea towards Morocco over the past several dekads. The mean eastern (20E-35E) portion of the ITF was approximated at 13.9N. The eastern ITF position for late September fell below the normal position by nearly 1 degree and marked the 2nd consecutive dekad that was below normal. Figure 1 shows the current position of the ITF compared to the climatological position during the 3rd dekad of September, and its previous position during the 2nd dekad of September. Figures 2 and 3 are time series, illustrating the latitudinal values of the western and eastern portions of the ITF, respectively, and their seasonal evolutions since April, 2018.

Current vs. Normal Dekadal ITF Position
and RFE Accumulated Precipitation (mm)

September 2018, Dekad 3



Mean Western Portion of the ITF: Averaged 10W to 10E
As of: September 2018, Dekad 3



Mean Eastern Portion of the ITF: Averaged 20E to 35E
As of: September 2018, Dekad 3

