



CPC Africa Desk InterTropical (ITF) Front Analysis

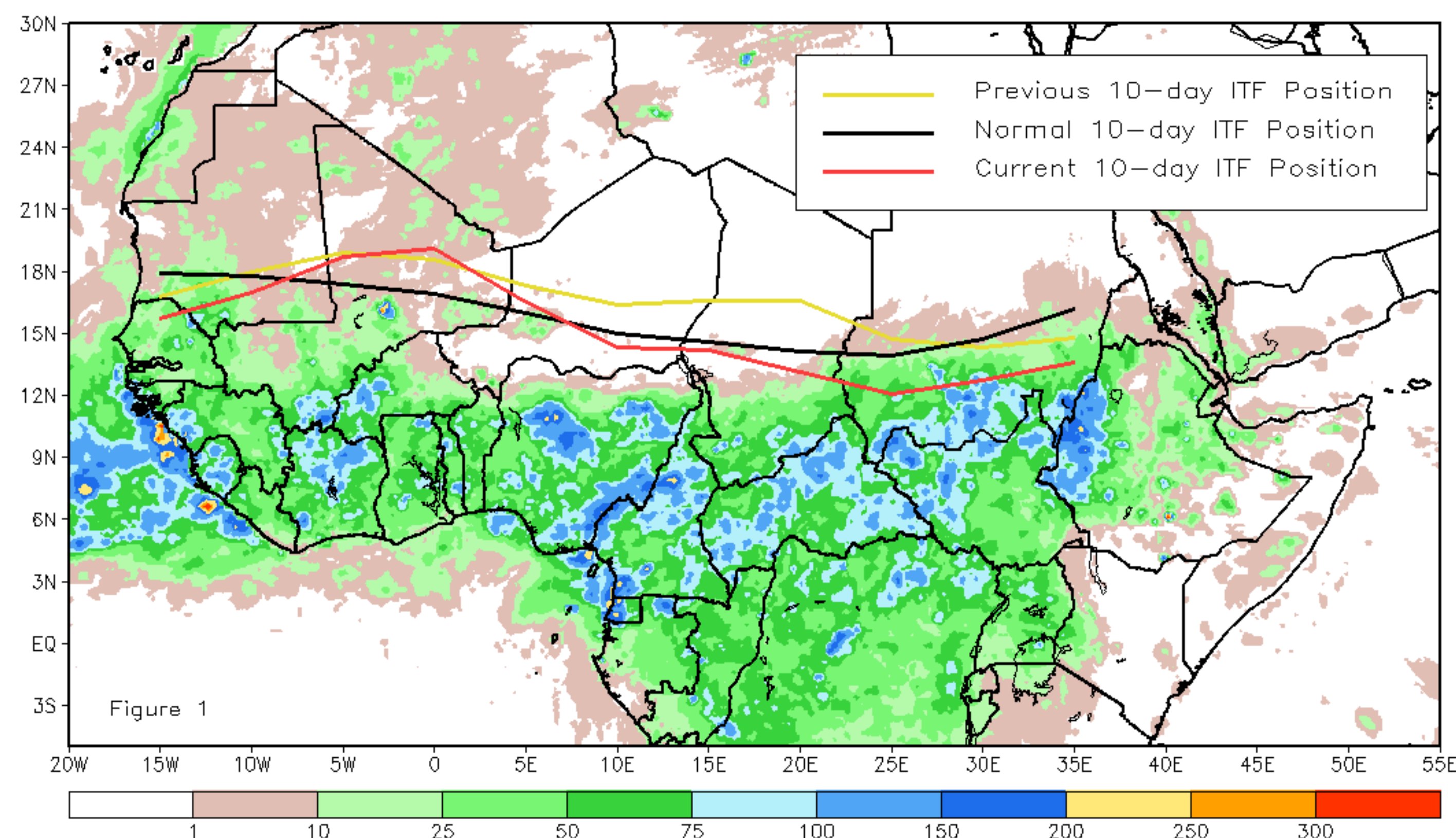
September 2017, Dekad 3

Discussion:

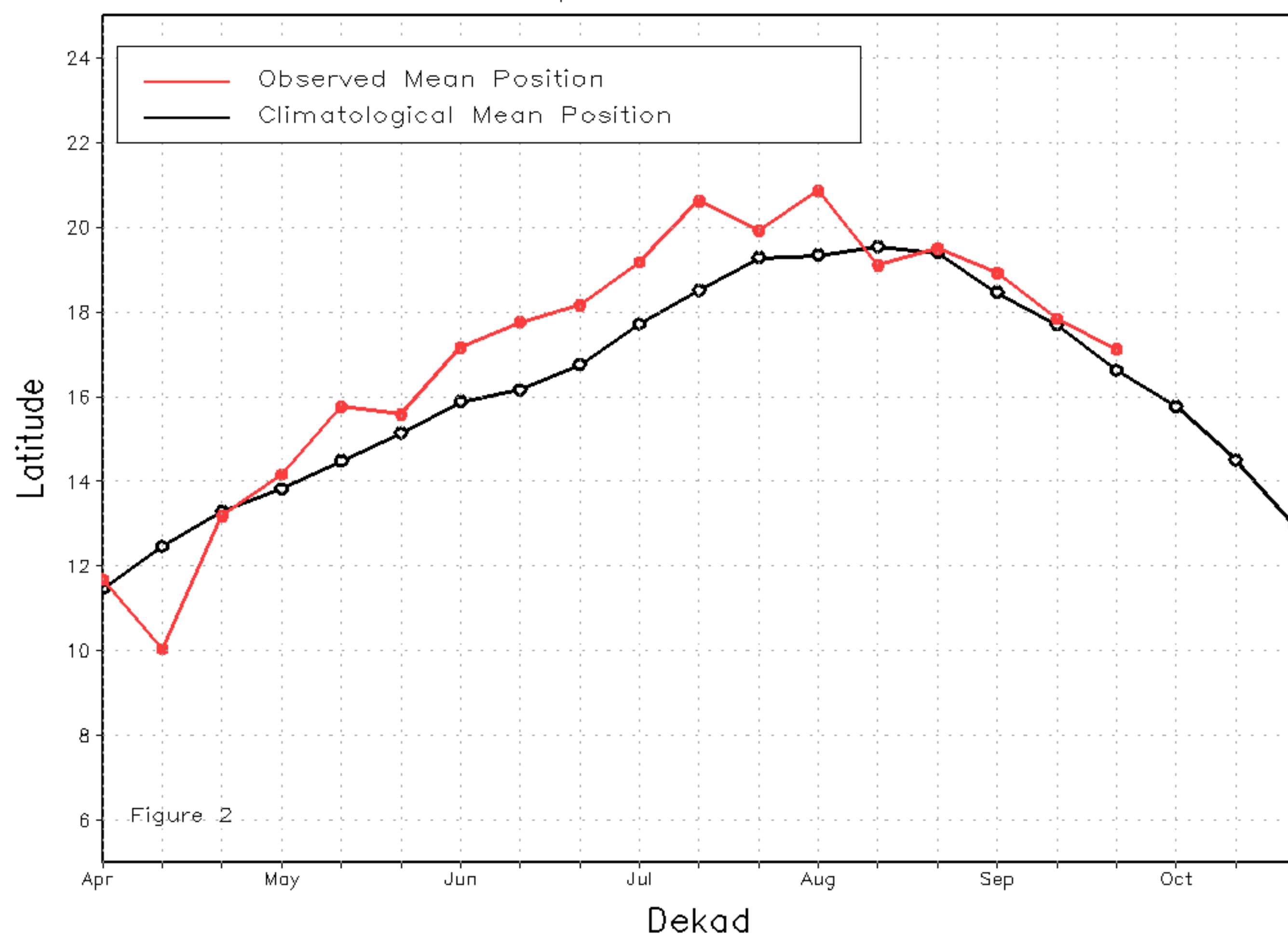
From September 21-30, the ITF continues its equatorward retreat with lesser amounts of rainfall received along parts of the Sahel. The mean western (10W-10E) portion of the ITF was approximated at 17.1 degrees N and was above the mean climatological position by 0.5 degrees. During the last dekad, rains cleared out especially quickly throughout Niger and Chad where the ITF experienced the most pronounced southward shift. The mean eastern (20E-35E) portion of the ITF was approximated at 12.9 degrees N and was well to the south of the average position by 1.8 degrees. Despite the anomalously south position of the ITF, much rain was still present accross southern Sudan. Figure 1 shows the current position of the ITF relative to its climatological position during the 3rd dekad of September and its previous position during the 2nd dekad of September. Figures 2 and 3 are time series, illustrating the mean latitudinal values of the western and eastern portion of the ITF, respectively, and their evolutions since April, 2017.

Current vs. Normal Dekadal ITF Position
and RFE Accumulated Precipitation (mm)

September 2017, Dekad 3



Mean Western Portion of the ITF: Averaged 10W to 10E
As of: September 2017, Dekad 3



Mean Eastern Portion of the ITF: Averaged 20E to 35E
As of: September 2017, Dekad 3

