



CPC Africa Desk InterTropical (ITF) Front Analysis

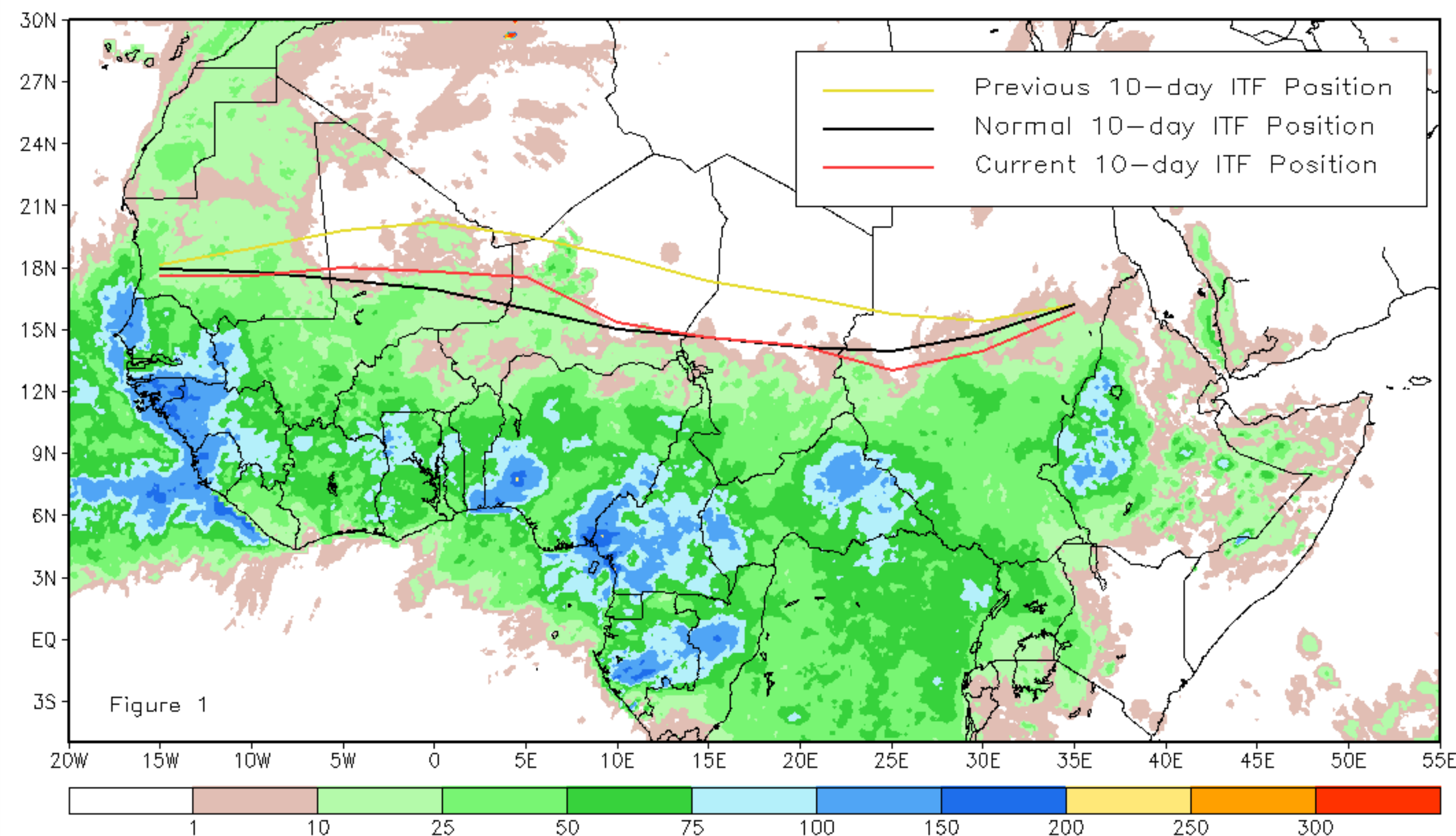
September 2012, Dekad 3

Discussion:

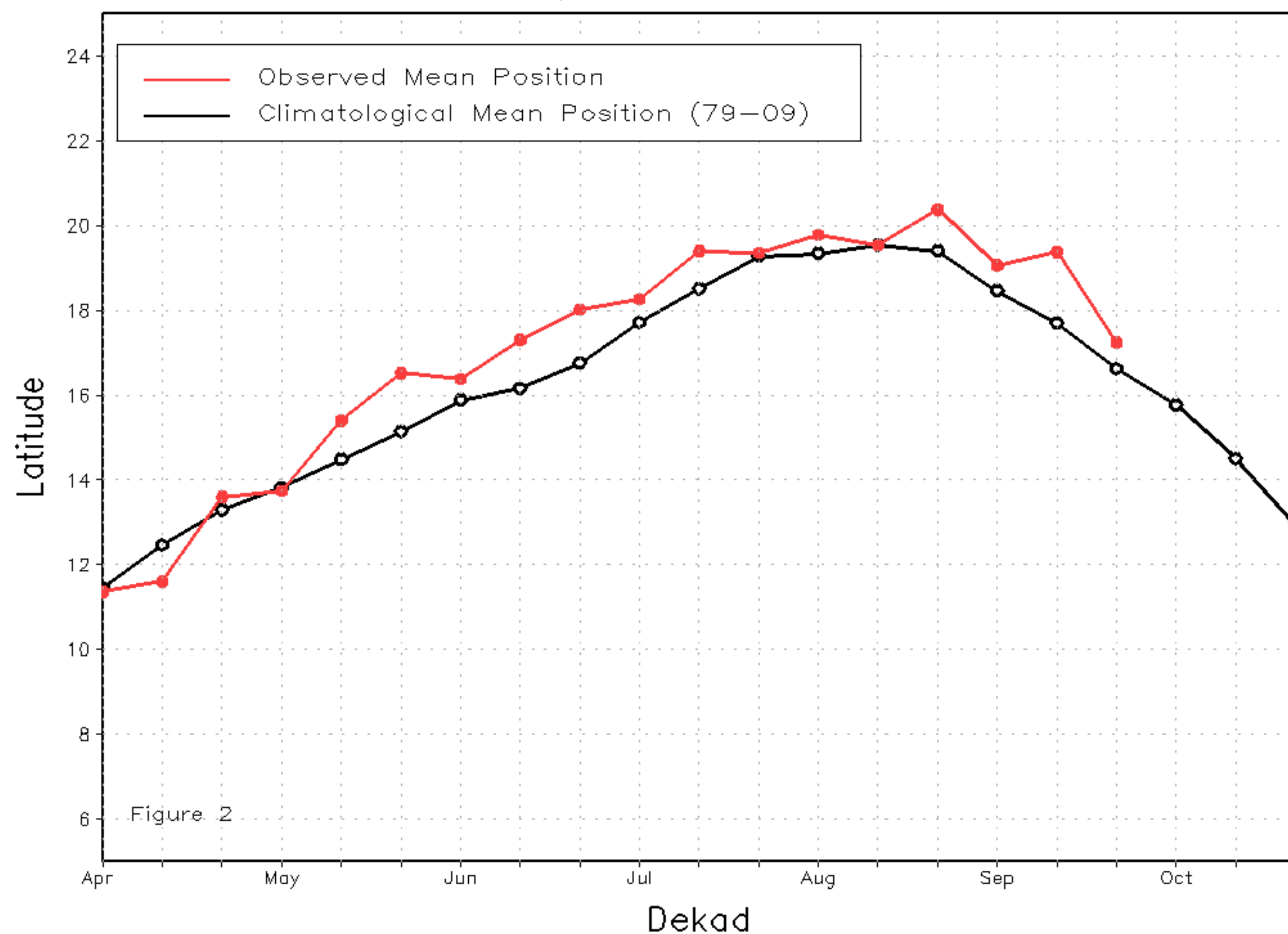
From September 21-30, 2012, the ITF experienced a significant equator-ward movement after a brief anomalous northerly push experienced during the second dekad of September. The mean western portion of the ITF (10W-10E) was located approximately at 17.2 degrees North which was 0.6 degrees north of the mean climatological position and 2.2 degrees south of the previous dekads position. Even with a 2 degree equator-ward shift, the ITF remained in an above-average northerly position resulting in above-average rains across the Sahel during the end of September. The mean eastern portion of the ITF (20E-35E) was located approximately at 14.2 degrees North which was 0.5 degrees south of the mean climatological position and 1.8 degrees south of the previous dekads position. An increase in dry northerly winds helped suppress the ITF across east Africa resulting in below-average rains in Sudan. Figure 1 shows the current ITF position relative to its long-term average position during the third dekad of September and its previous position during the second dekad of September. Figures 2 and 3 are time series, illustrating the mean latitudinal values of the western and eastern portion of the ITF, respectively, and their evolutions since April, 2012.

Current vs. Normal Dekadal ITF Position
and RFE Accumulated Precipitation (mm)

September 2012, Dekad 3



Mean Western Portion of the ITF: Averaged 10W to 10E
As of: September 2012, Dekad 3



Mean Eastern Portion of the ITF: Averaged 20E to 35E
As of: September 2012, Dekad 3

