



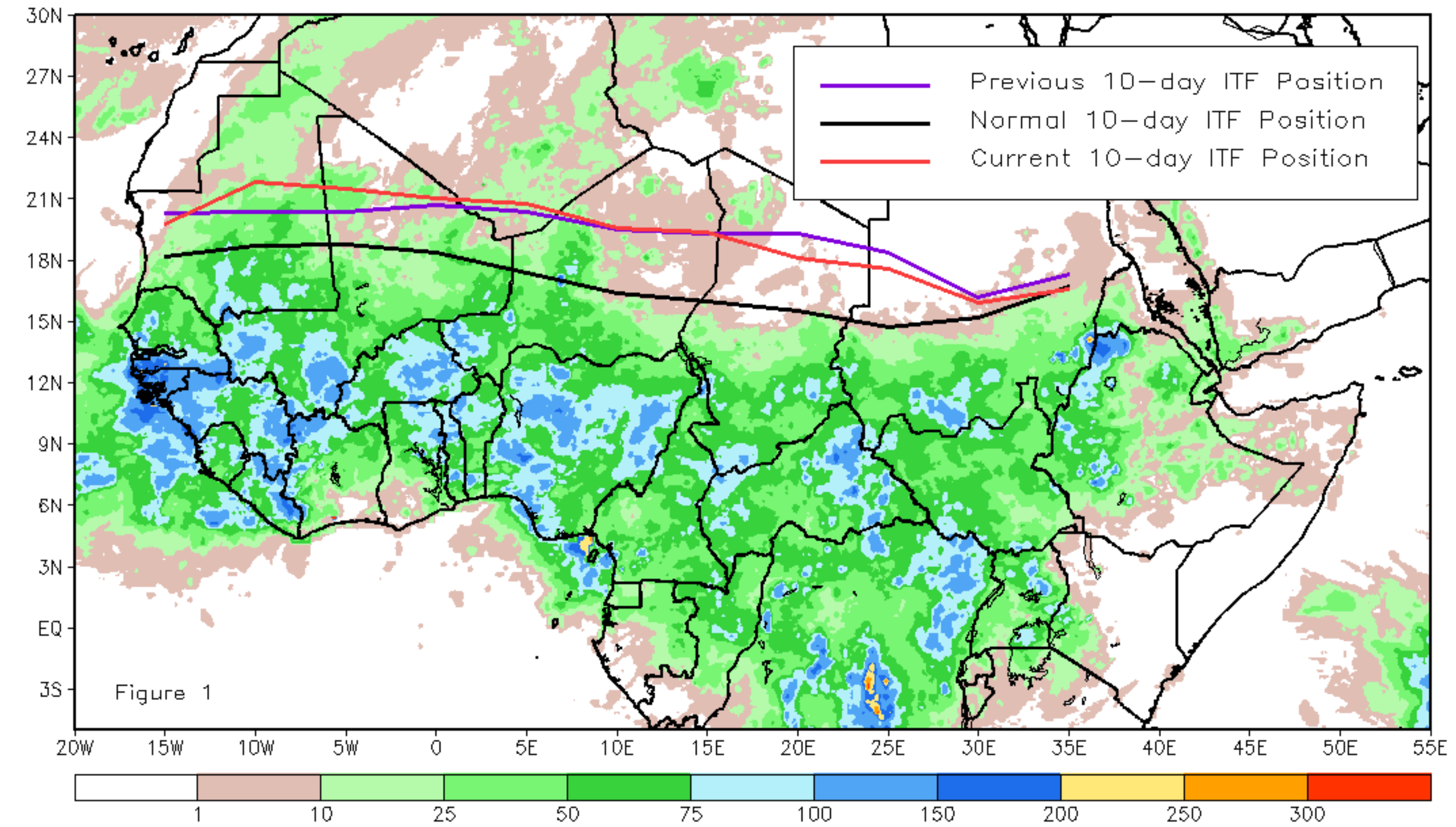
# CPC Africa Desk InterTropical (ITF) Front Analysis

## September 2024, Dekad 2

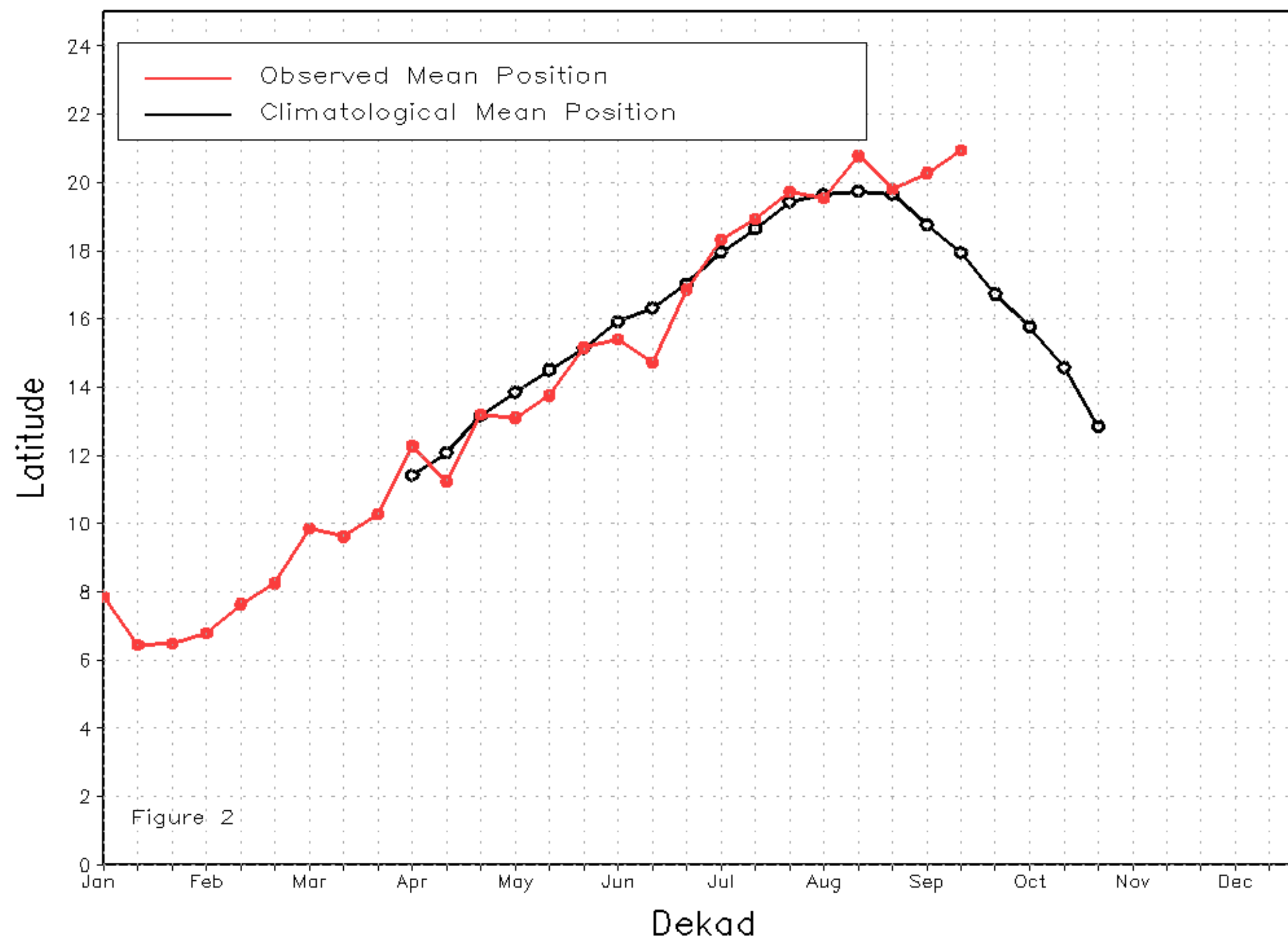
### Discussion:

From September 11-20, the Inter-Tropical Front (ITF) moved northward along most of its length, except in northern Chad and central Sudan, where it moved southward compared to its previous position. The western (10W-10E) portion of the ITF was approximately 20.9N, which was above the climatological position by 3.0 degrees. Also, at the eastern (20E-35E) portion, the ITF was approximated at 17.0N, which was above the long-term average position by 1.5 degrees. Figure 1 displays the current position of the ITF relative to the climatological position during the 2nd dekad of September and its previous position during the 1st dekad of September. Figures 2 and 3 are time series, illustrating the latitudinal positions for the western and eastern portions of the ITF, respectively, and their seasonal evolutions since the beginning of April 2024.

Current vs. Normal Dekadal ITF Position  
and RFE Accumulated Precipitation (mm)  
September 2024, Dekad 2



Mean Western Portion of the ITF: Averaged 10W to 10E  
As of: September 2024, Dekad 2



Mean Eastern Portion of the ITF: Averaged 20E to 35E  
As of: September 2024, Dekad 2

