



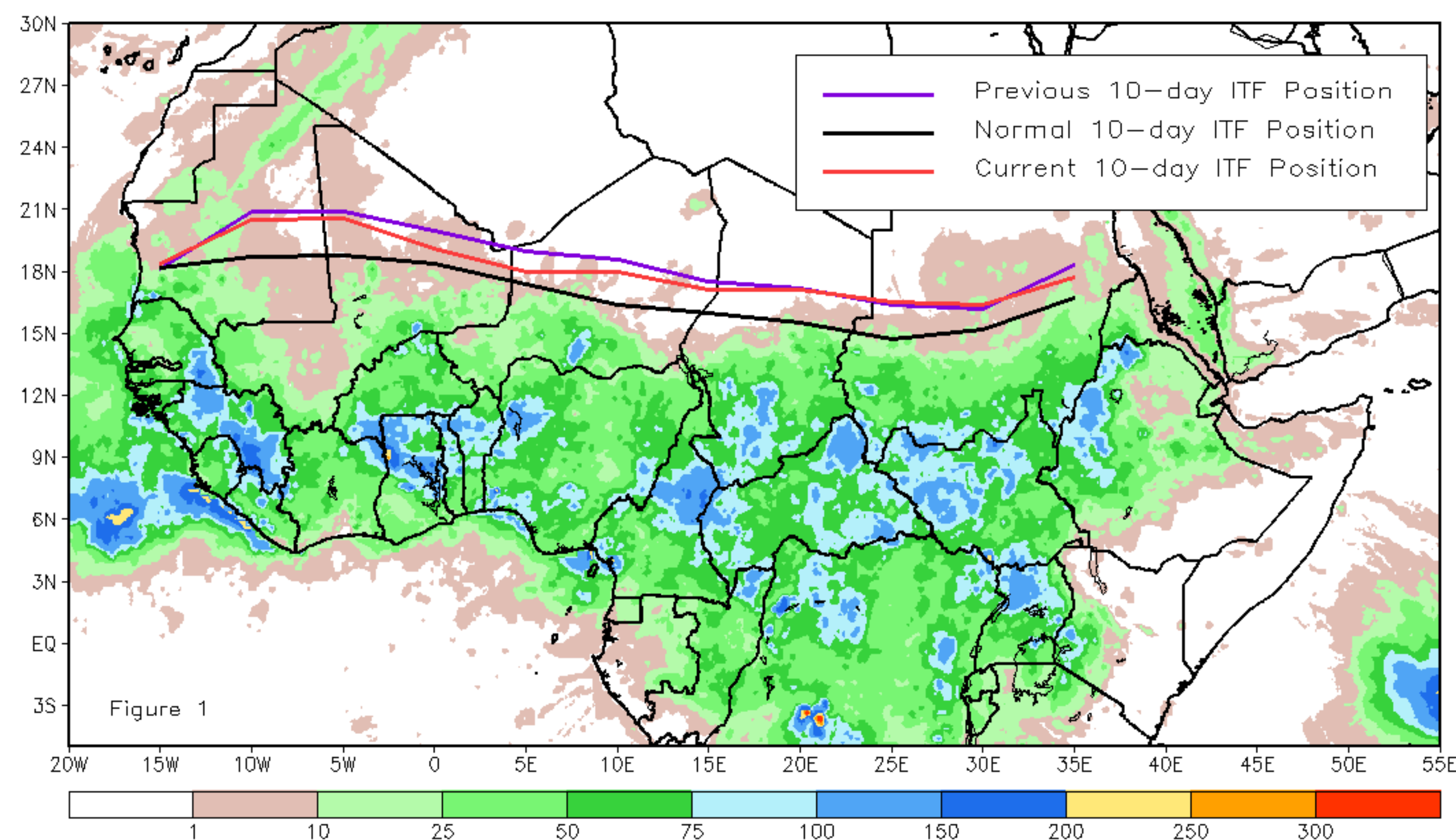
# CPC Africa Desk InterTropical (ITF) Front Analysis

## September 2023, Dekad 2

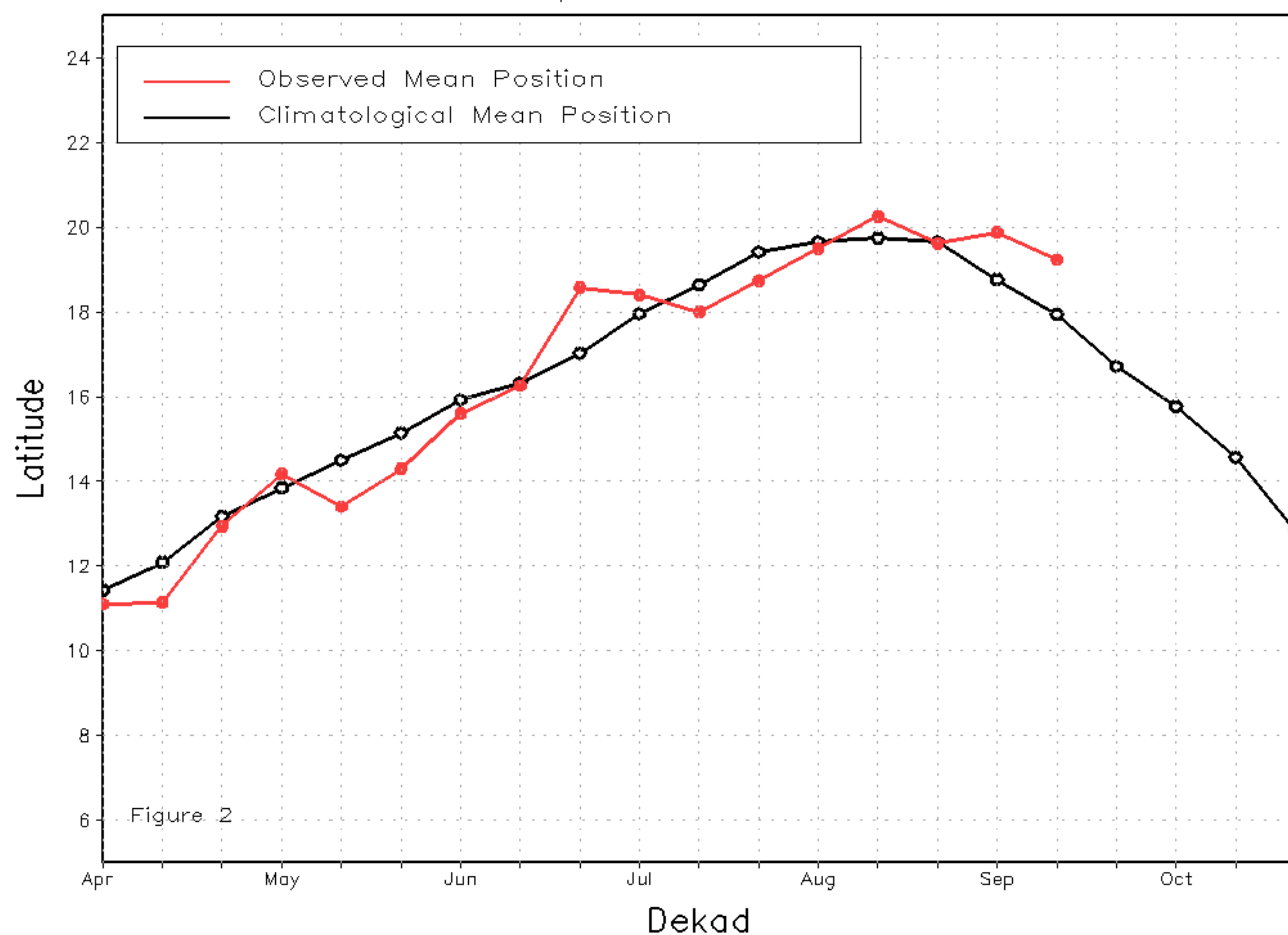
### Discussion:

From 11-20 September, the ITF propagated south relative to the previous position along its entire length. The western (10W-10E) portion of the ITF was located approximately at 18.5N. This was south of the previous dekad by 1.4 degrees, but still north of the climatological position by 0.6 degrees. This likely helped keep rain widespread in the western Sahel. At the eastern (20E-35E) portion, the ITF was approximated at 15.6N. This was 1.4 degrees south of its position the previous dekad and only above the long-term average position by 0.1 degrees. Figure 1 displays the current position of the ITF relative to the climatological position during the 2nd dekad of September and its previous position during the 1st dekad of September. Figures 2 and 3 are time series, illustrating the latitudinal positions for the western and eastern portions of the ITF, respectively, and their seasonal evolutions since the beginning of April 2023.

Current vs. Normal Dekadal ITF Position  
and RFE Accumulated Precipitation (mm)  
September 2023, Dekad 2



Mean Western Portion of the ITF: Averaged 10W to 10E  
As of: September 2023, Dekad 2



Mean Eastern Portion of the ITF: Averaged 20E to 35E  
As of: September 2023, Dekad 2

