



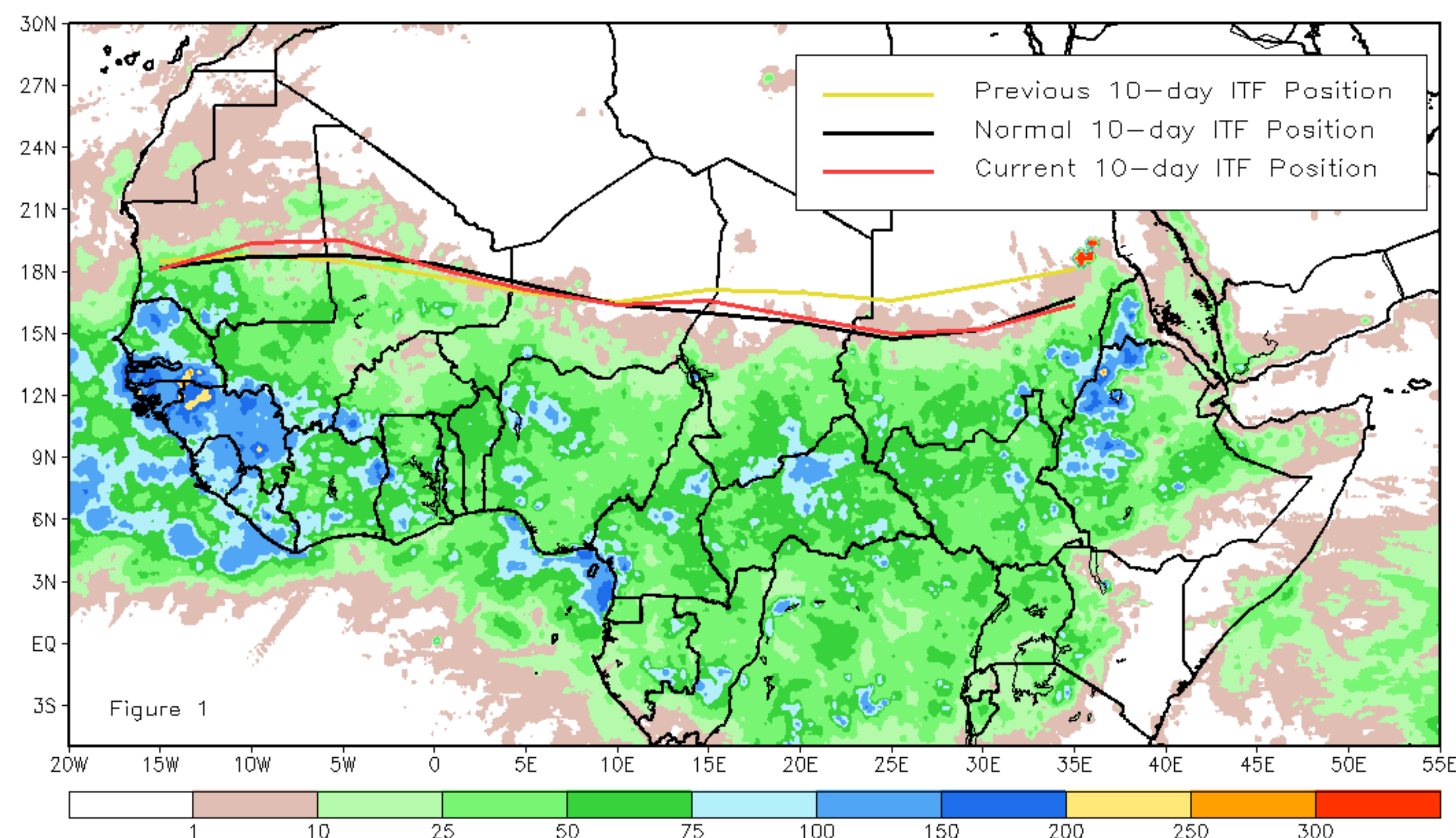
# CPC Africa Desk InterTropical (ITF) Front Analysis

## September 2021, Dekad 2

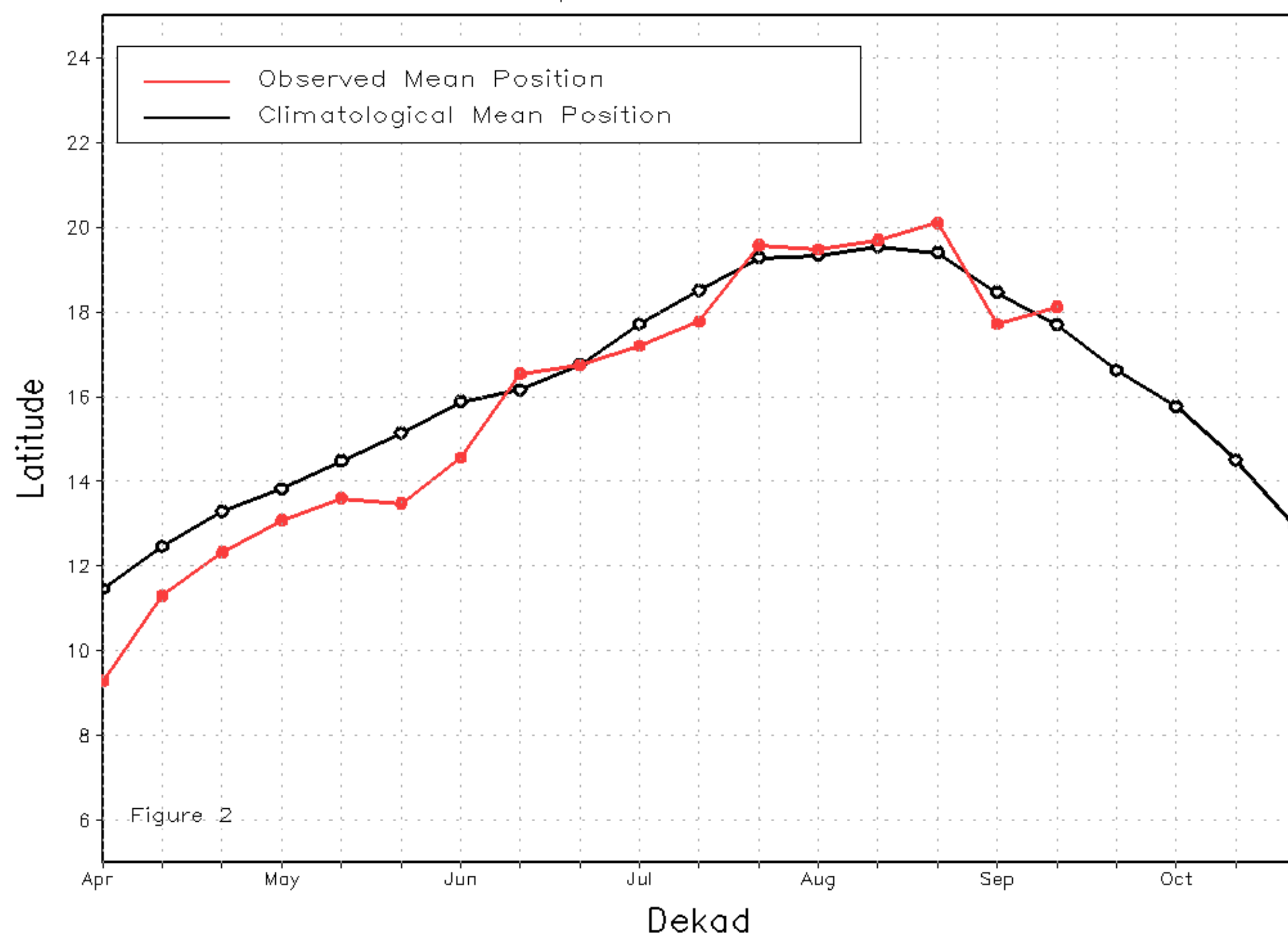
### Discussion:

From 11-21 of September, the ITF was located along its climatological position. The western (10W-10E) portion of the ITF was located approximately at 18.1N, which was north to the climatological position centered at 17.9N. This position of the ITF explains the increase of rainfall across the far northern part of Senegal, southern Mauritania and southern Niger. The eastern (20E-35E) portion of the ITF was located at 15.6N, which was north to the climatological position centered at 15.5N. This position could explain the continuation of rainfall across central Chad, central Sudan, Eritrea and northwestern Ethiopia. Figure 1 shows the current position of the ITF relative to the long-term average position during the 2nd dekad of September and its previous position during the 1st dekad of September. Figures 2 and 3 are time series, illustrating the latitudinal values of the western and eastern portions of the ITF, respectively, and their seasonal evolutions since the beginning of April, 2021.

Current vs. Normal Dekadal ITF Position  
and RFE Accumulated Precipitation (mm)  
September 2021, Dekad 2



Mean Western Portion of the ITF: Averaged 10W to 10E  
As of: September 2021, Dekad 2



Mean Eastern Portion of the ITF: Averaged 20E to 35E  
As of: September 2021, Dekad 2

