



CPC Africa Desk InterTropical (ITF) Front Analysis

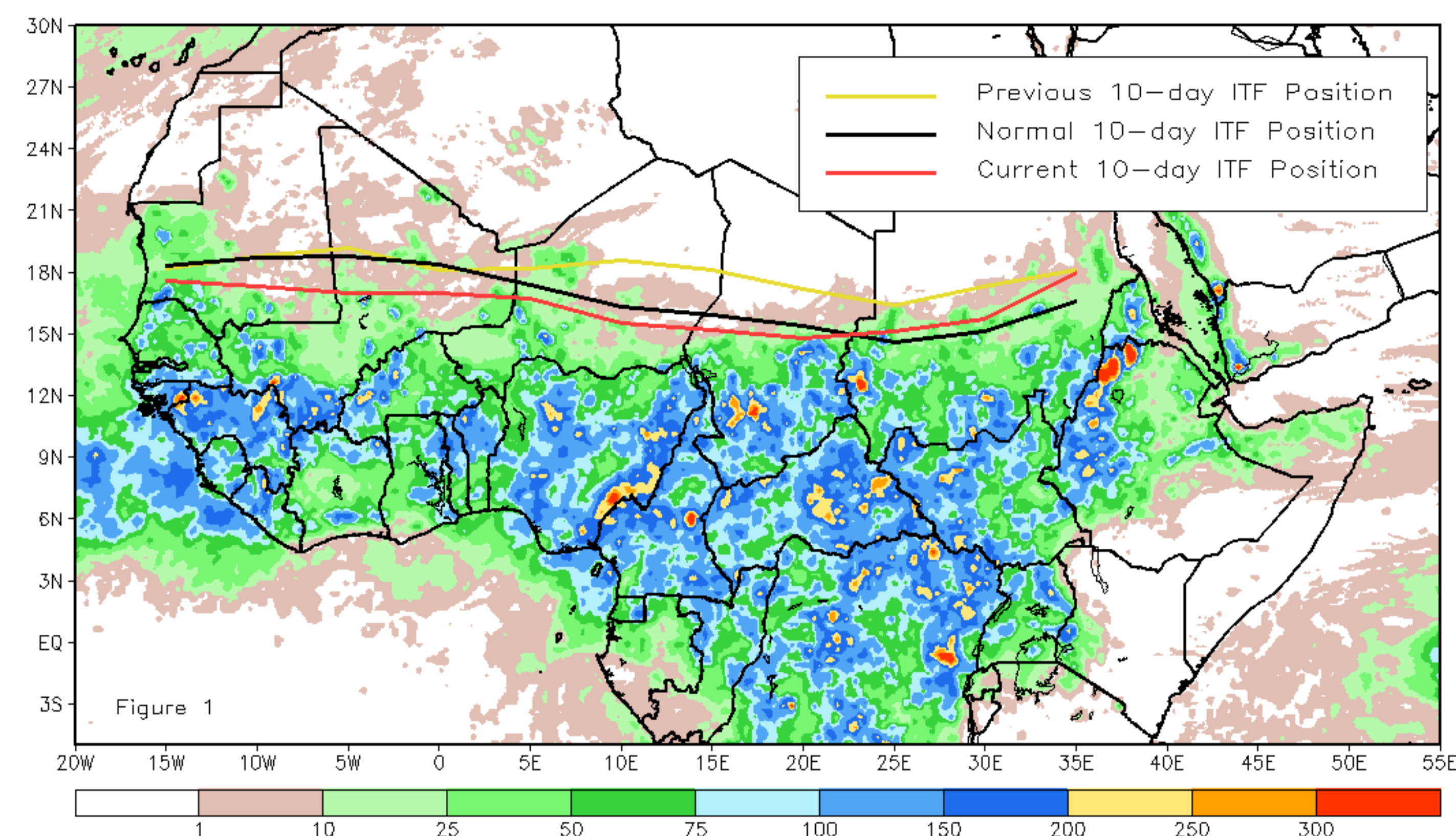
September 2020, Dekad 2

Discussion:

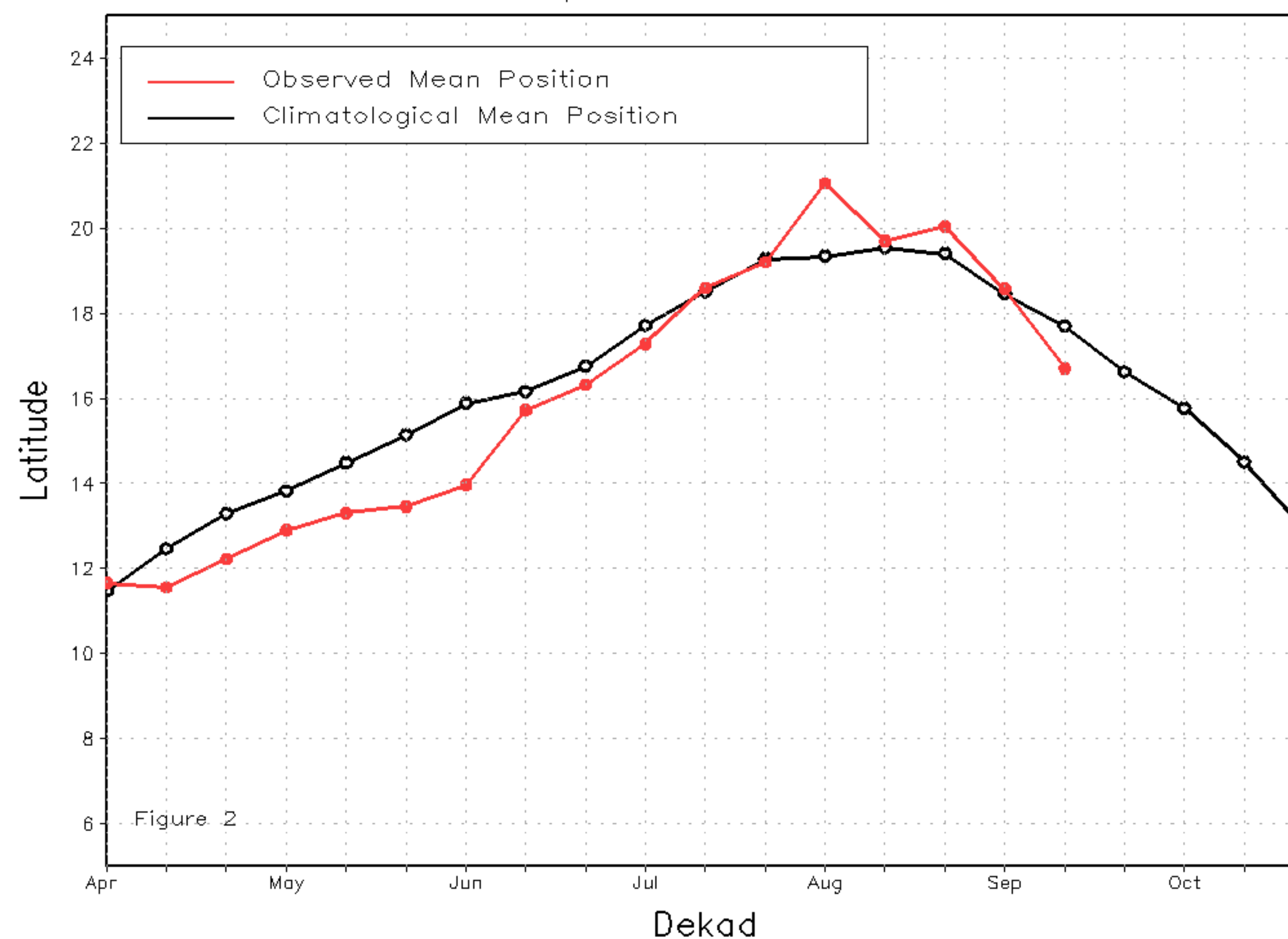
From September 11-20, the ITF has moved further southward compare to the previous dekad. The western part has moved significantly to the south compared to the climatological position between 15W-5W which could explain the end of rainy season over the major part of Mauritania. In contrast, the eastern part (between 25E-35E) is still above the climatological position which could explain a continuation of high amount of rainfall over the central and southern part of Chad and Sudan. The mean eastern (20E-35E) portion of the ITF was located at 15.9N, which was well to the north of the mean position by 0.5 degrees. The mean western (10W-10E) portion of the ITF was located at 16.7, which was located to the south of the mean position by 1.2 degrees. Figure 1 shows the current position of the ITF relative to the climatological position during the 2nd dekad of September and its previous position during the 1st dekad of September. Figures 2 and 3 are time series, illustrating the latitudinal values of the western and eastern portions of the ITF, respectively, and their seasonal evolutions since April, 2020.

Current vs. Normal Dekadal ITF Position
and RFE Accumulated Precipitation (mm)

September 2020, Dekad 2



Mean Western Portion of the ITF: Averaged 10W to 10E
As of: September 2020, Dekad 2



Mean Eastern Portion of the ITF: Averaged 20E to 35E
As of: September 2020, Dekad 2

