



CPC Africa Desk InterTropical (ITF) Front Analysis

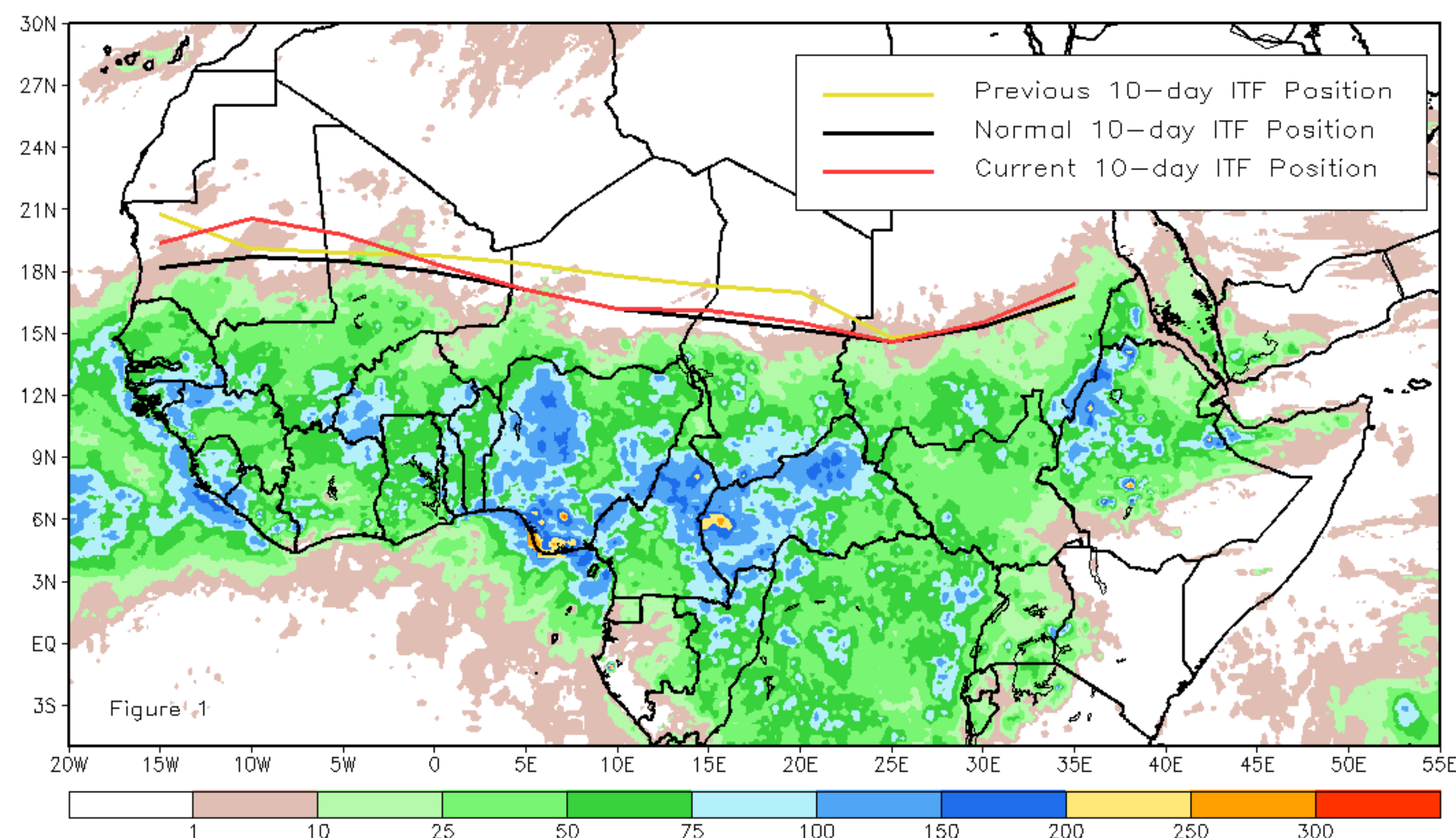
September 2019, Dekad 2

Discussion:

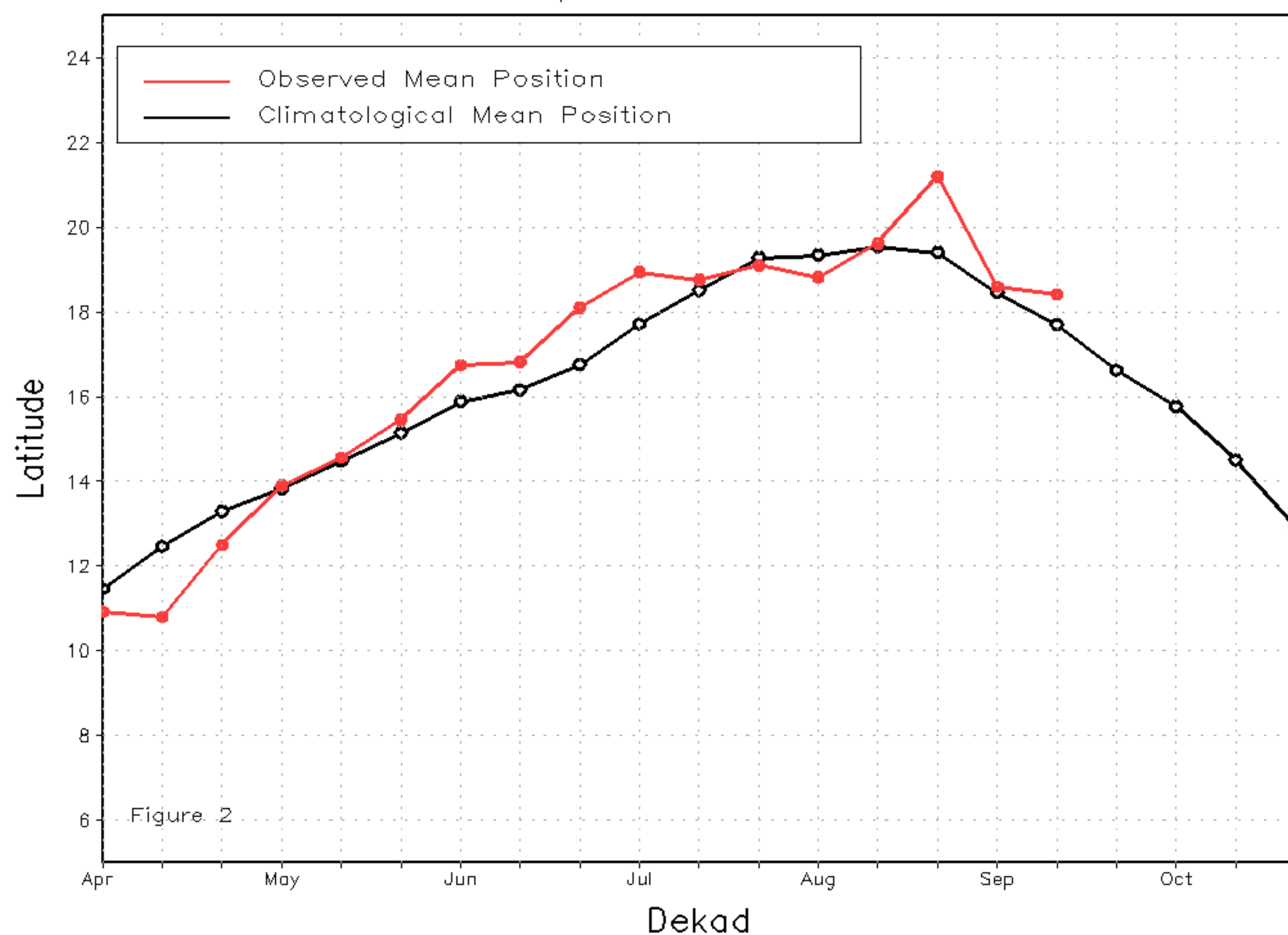
From September 11-20, most of the ITF is located along the normal position. The mean position of the ITF is approximated at 18.4 between 10W-10E, which represents a 0.2 southward compared to the previous decade. Between 20E-35E, the mean position is 15.8 which represent almost the same position as previous decade. The ITF is located about the same position as the normal position except in the far west and far east located further north which could explain the enhancement of rain experienced over Senegal and southern Mauritania in the west; and northwestern Ethiopia, western Eritrea and eastern Sudan. Between 15W-0E, the ITF is significantly above the normal position. Between 25E-35E, the ITF slightly is located northward of the normal position. As a result, above average rainfall was observed over eastern part of Sudan and western Eritrea. The north-movement of the ITF in the far-western Africa could explain the continuation of flood and landslides reported over Mauritania, Senegal, Mali and Niger. The pick in the far-eastern ITF also could explain the flood and landslides in Sudan. Figure 1 shows the current position of the ITF relative to the long-term average position during the 2nd decade of September and its previous position during the 1st decade of September. Figures 2 and 3 are time series, illustrating the latitudinal values of the western and eastern portions of the ITF, respectively, and their seasonal evolutions since April, 2019.

Current vs. Normal Dekadal ITF Position
and RFE Accumulated Precipitation (mm)

September 2019, Dekad 2



Mean Western Portion of the ITF: Averaged 10W to 10E
As of: September 2019, Dekad 2



Mean Eastern Portion of the ITF: Averaged 20E to 35E
As of: September 2019, Dekad 2

