



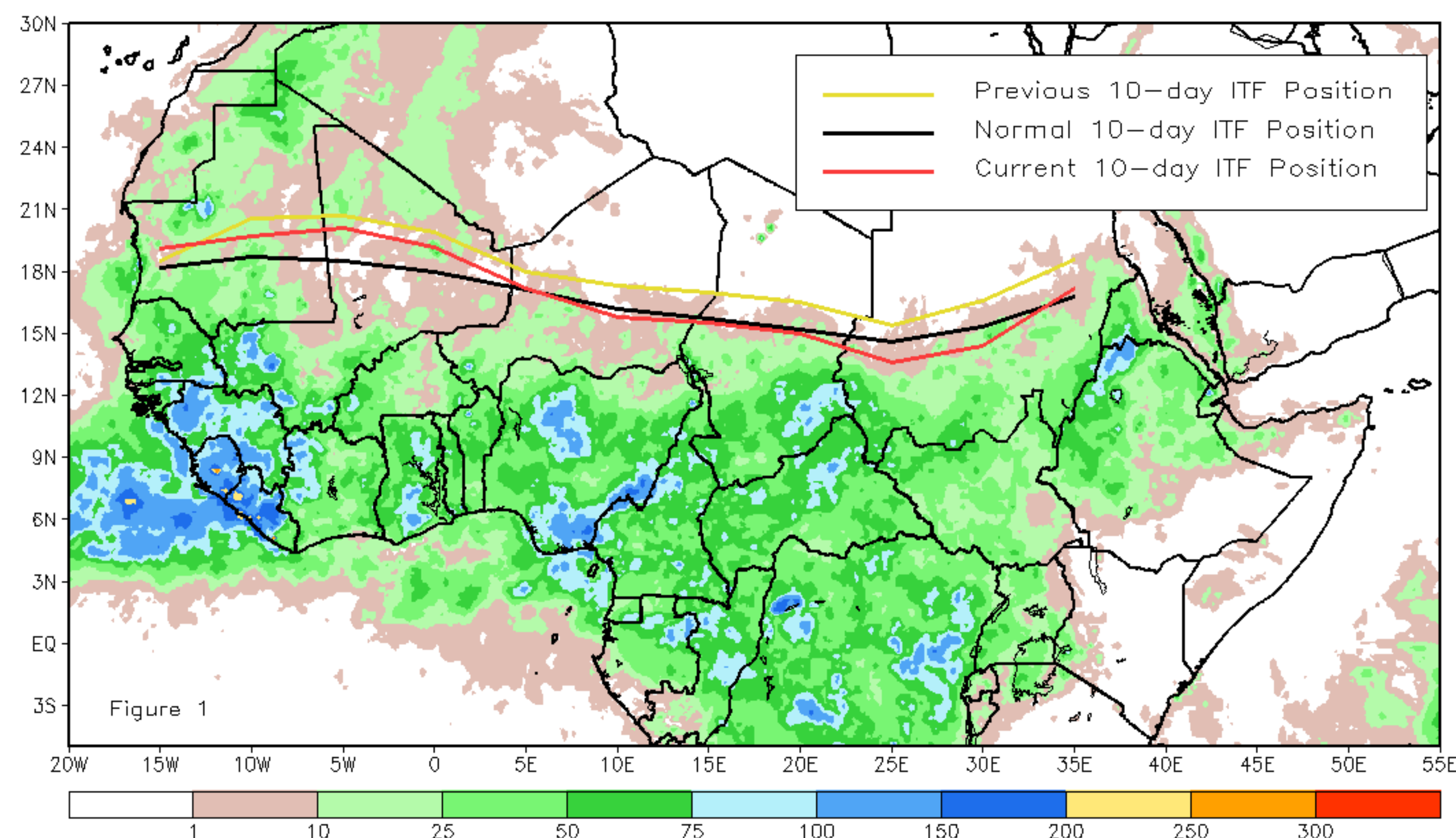
CPC Africa Desk InterTropical (ITF) Front Analysis

September 2018, Dekad 2

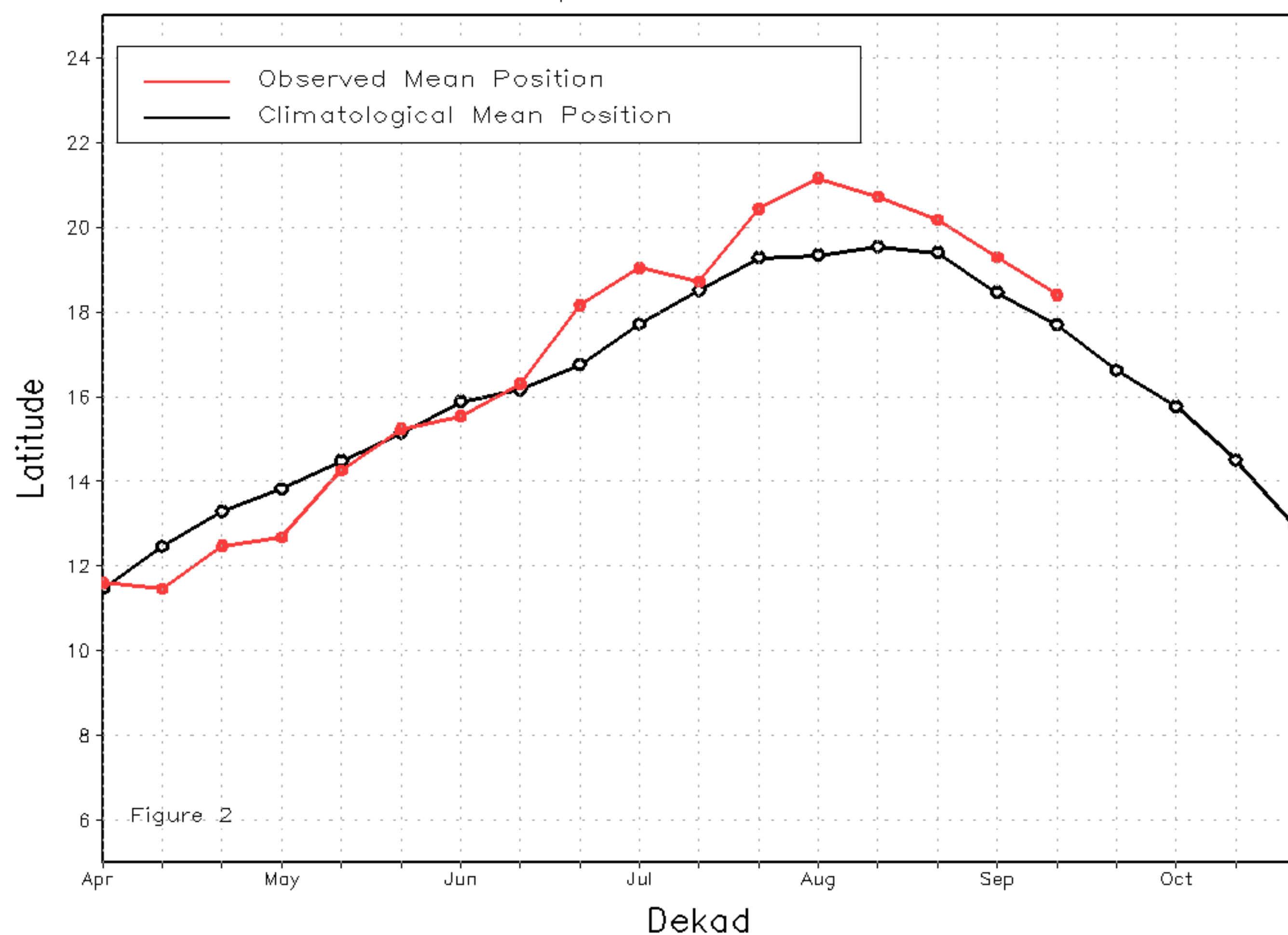
Discussion:

From September 11-20, the ITF continued its equatorward retreat and fell below-average in its latitudinal position for the first time since June over many areas. The mean western (10W - 10E) portion of the ITF was located at 18.4N, and remained anomalously north of the mean position by 0.7 degree. As a result, very high lower-level moisture content and regions with above average rainfall were observed extending northward from the Guinea towards Morocco during the 2nd dekad of September. The mean eastern (20E - 35E) portion of the ITF was approximated at 15.1N, falling below the climatological position by 0.4 degree. Here, below-average rainfall was received mostly throughout southern Sudan, South Sudan, and southwestern Ethiopia. Figure 1 shows the current position of the ITF compared to the climatological position during the 2nd dekad of September, and its previous position during the 1st dekad of September. Figures 2 and 3 are time series, illustrating the latitudinal values of the western and eastern portions of the ITF, respectively, and their seasonal evolutions since April, 2018.

Current vs. Normal Dekadal ITF Position
and RFE Accumulated Precipitation (mm)
September 2018, Dekad 2



Mean Western Portion of the ITF: Averaged 10W to 10E
As of: September 2018, Dekad 2



Mean Eastern Portion of the ITF: Averaged 20E to 35E
As of: September 2018, Dekad 2

