



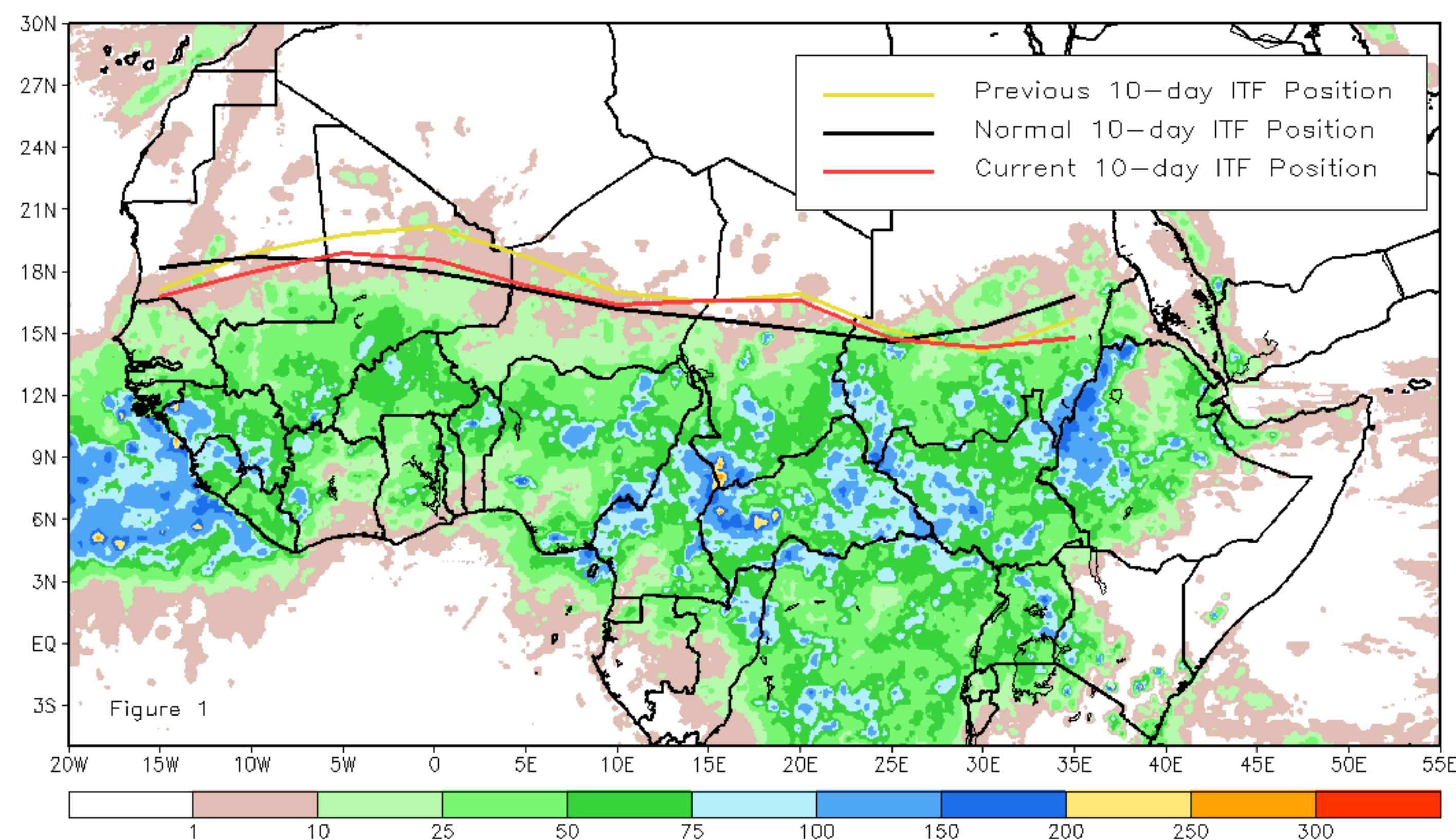
# CPC Africa Desk InterTropical (ITF) Front Analysis

## September 2017, Dekad 2

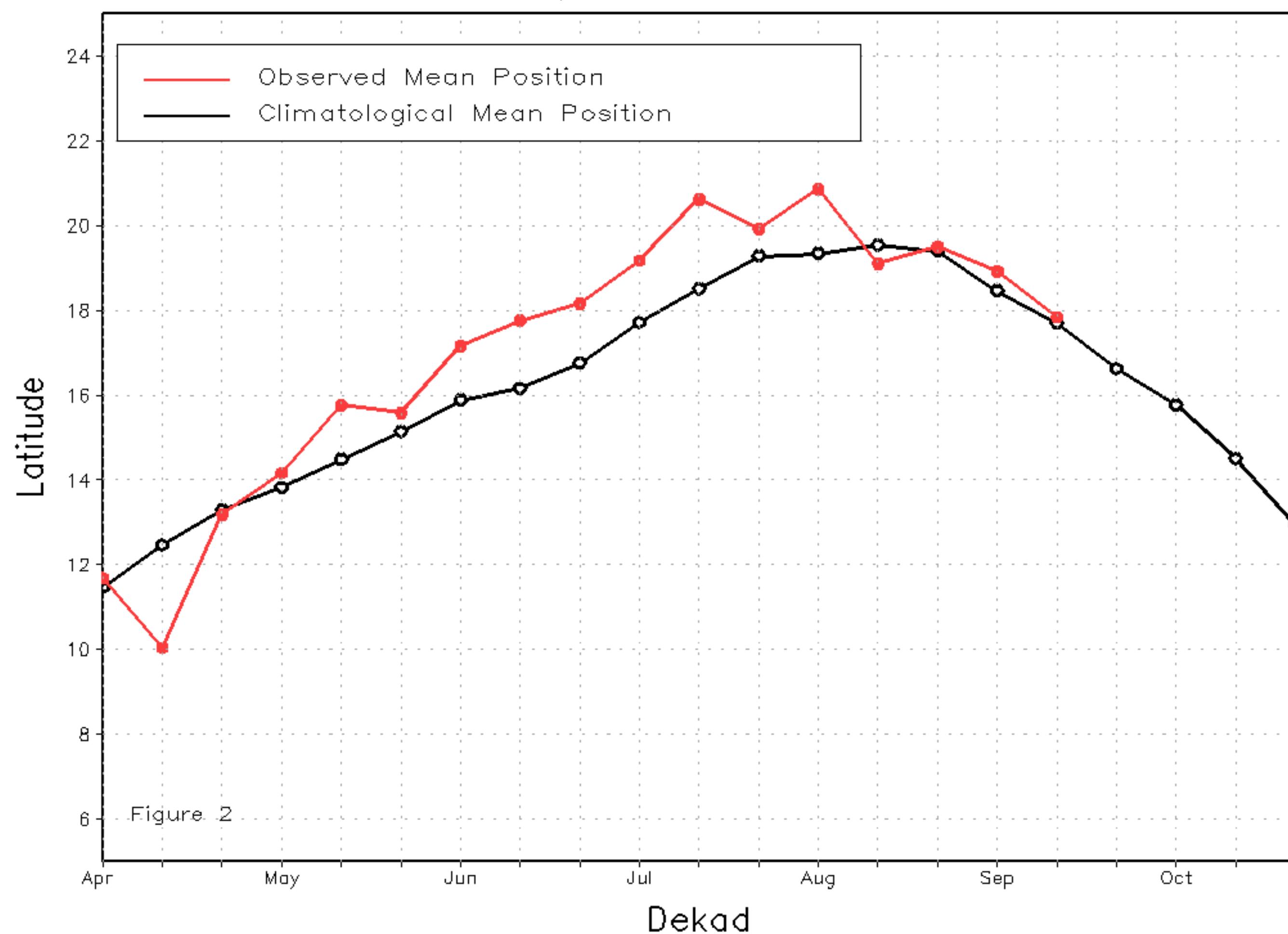
### Discussion:

From September 11-20, the ITF continues its equatorward retreat with lesser amounts of rainfall received along parts of the Sahel. The mean western (10W-10E) portion of the ITF was approximated at 17.8 degrees N and was slightly above the mean climatological position by 0.1 degrees. While near normal, many parts of central Mali received enhanced rainfall during the last dekad. The mean eastern (20E-35E) portion of the ITF was approximated at 15.1 degrees N and was to the south of the average position by 0.4 degrees. The ITF experienced its most anomalous position over eastern Sudan, as seasonal rains in the region may be experiencing an earlier than normal cessation to the monsoon. Figure 1 shows the current position of the ITF relative to its climatological position during the 2nd dekad of September and its previous position during the 1st dekad of September. Figures 2 and 3 are time series, illustrating the mean latitudinal values of the western and eastern portion of the ITF, respectively, and their evolutions since April, 2017.

Current vs. Normal Dekadal ITF Position  
and RFE Accumulated Precipitation (mm)  
September 2017, Dekad 2



Mean Western Portion of the ITF: Averaged 10W to 10E  
As of: September 2017, Dekad 2



Mean Eastern Portion of the ITF: Averaged 20E to 35E  
As of: September 2017, Dekad 2

