



CPC Africa Desk InterTropical (ITF) Front Analysis

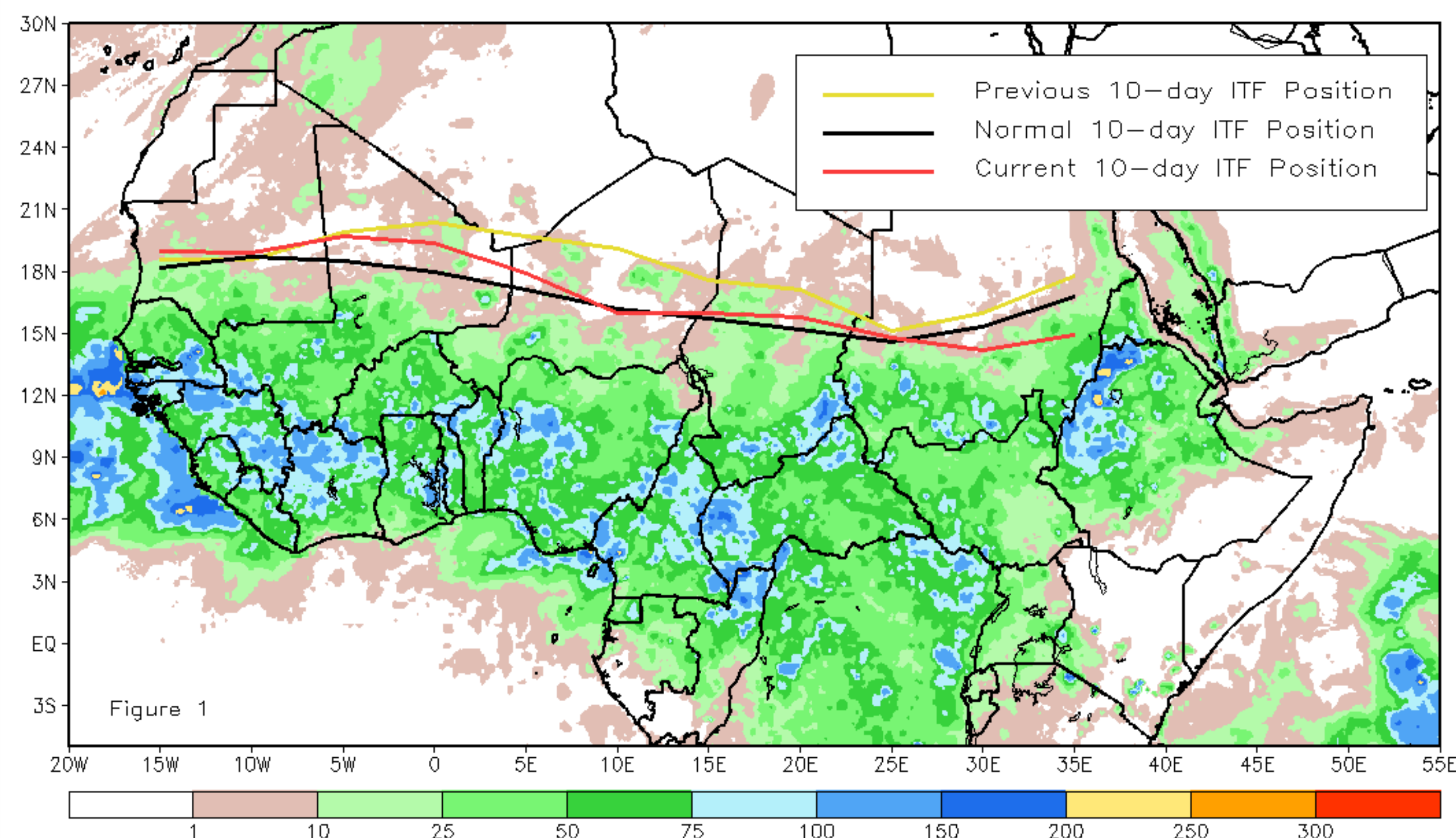
September 2014, Dekad 2

Discussion:

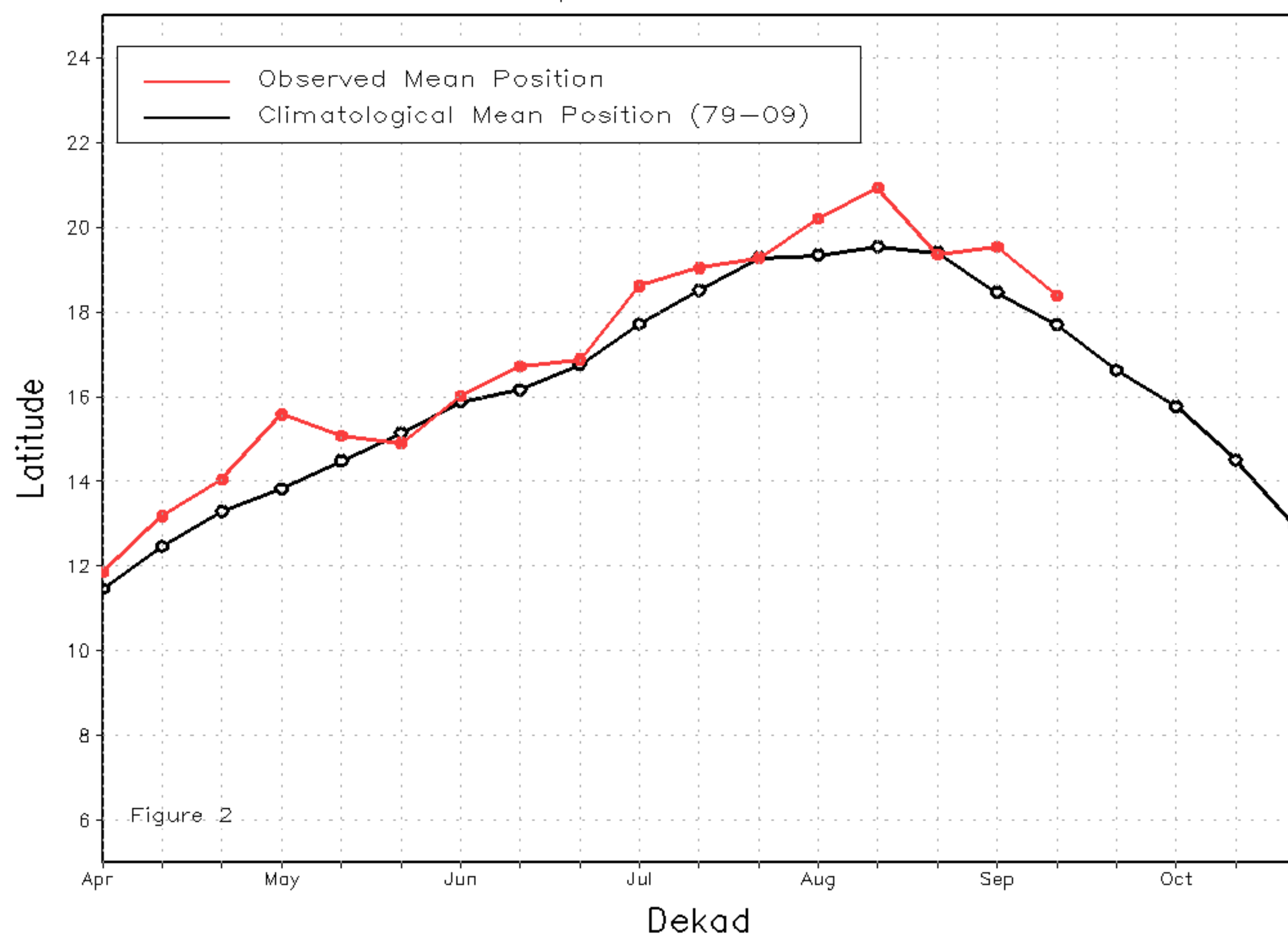
From September 11-20, 2014, the ITF seasonally progressed equatorward in both eastern and western sections of Africa. The mean western portion of the ITF (10W to 10E) was approximated at 18.4N, which was 0.6 degrees north of the mean climatological position, but 1.1 degrees south of the previous dekads position. The ITF in western sections of Africa remains displaced to the north as it has during the last five decades. The result of this displacement is continued rainfall farther north across the Sahel than climatologically expected. The mean eastern portion of the ITF (20E to 35E) was approximated at 14.9N, which was 0.2 degrees south of the mean climatological position and 1.6 degrees south of the previous dekads position. The ITF across eastern sections rapidly progressed equatorward during the past dekad, although it remains near the climatological position. In general, the ITF across both eastern and western sections rapidly progresses equatorward during the months of September and October according to climatology. Figure 1 shows the current ITF position relative to the positions of climatology for the second dekad of September, and its previous position during the first dekad of September. Figures 2 and 3 are time series illustrating the mean latitudinal values of the western and eastern portions of the ITF, respectively, and their observed progressions since April, 2014.

Current vs. Normal Dekadal ITF Position
and RFE Accumulated Precipitation (mm)

September 2014, Dekad 2



Mean Western Portion of the ITF: Averaged 10W to 10E
As of: September 2014, Dekad 2



Mean Eastern Portion of the ITF: Averaged 20E to 35E
As of: September 2014, Dekad 2

