



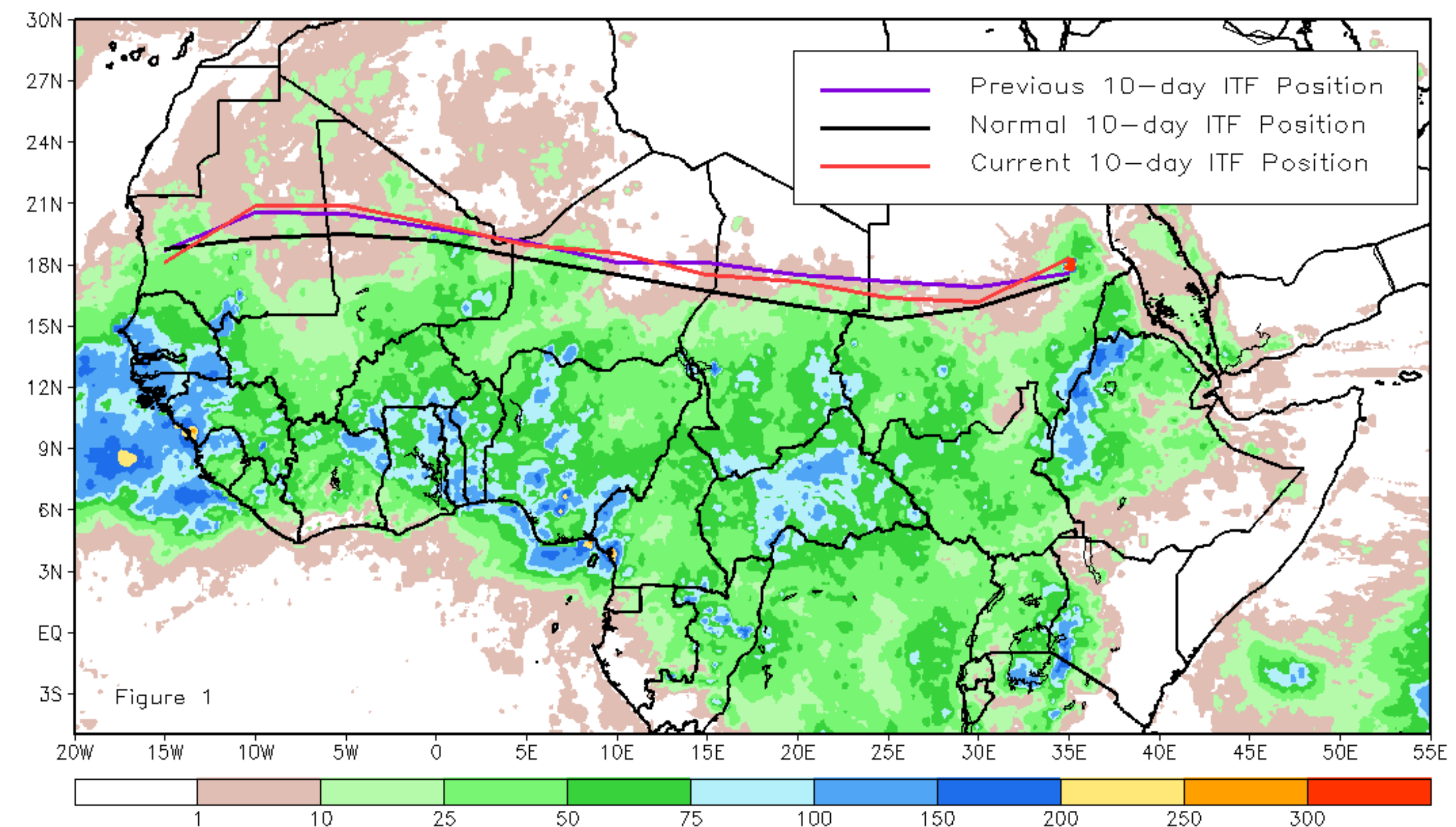
CPC Africa Desk InterTropical (ITF) Front Analysis

September 2023, Dekad 1

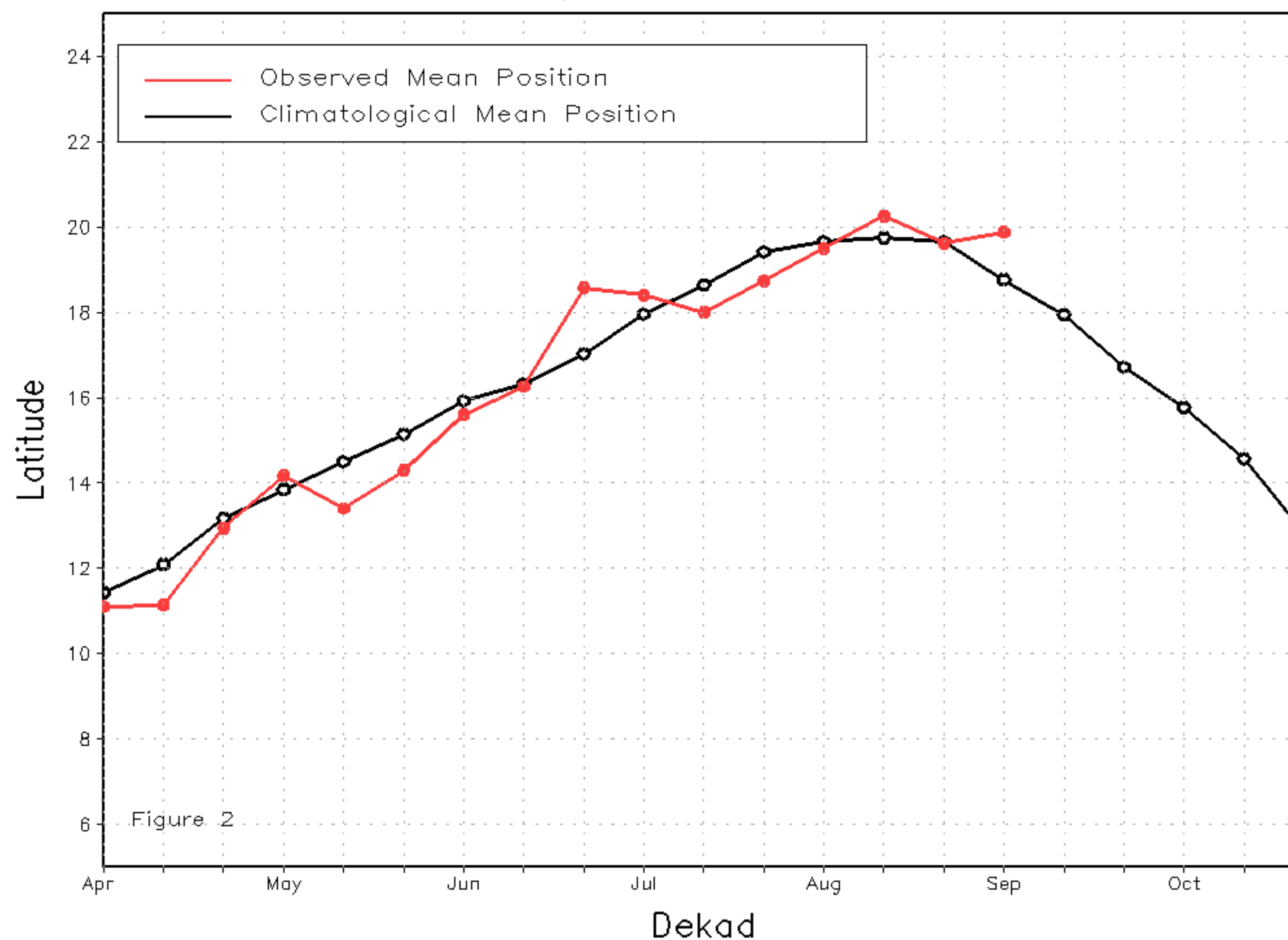
Discussion:

From 1-10 September, the ITF propagated slightly south relative to the previous position along its eastern half, while it returned slightly to the north in West Africa. The western (10W-10E) portion of the ITF was located approximately at 19.9N, which was north of the climatological position by 1.1 degree. Also, at the eastern (20E-35E) portion, the ITF was approximated at 17.0N, which was above the long-term average position by 0.9 degrees. Figure 1 displays the current position of the ITF relative to the climatological position during the 1st dekad of September and its previous position during the 3rd dekad of August. Figures 2 and 3 are time series, illustrating the latitudinal positions for the western and eastern portions of the ITF, respectively, and their seasonal evolutions since the beginning of April 2023.

Current vs. Normal Dekadal ITF Position
and RFE Accumulated Precipitation (mm)
September 2023, Dekad 1



Mean Western Portion of the ITF: Averaged 10W to 10E
As of: September 2023, Dekad 1



Mean Eastern Portion of the ITF: Averaged 20E to 35E
As of: September 2023, Dekad 1

