



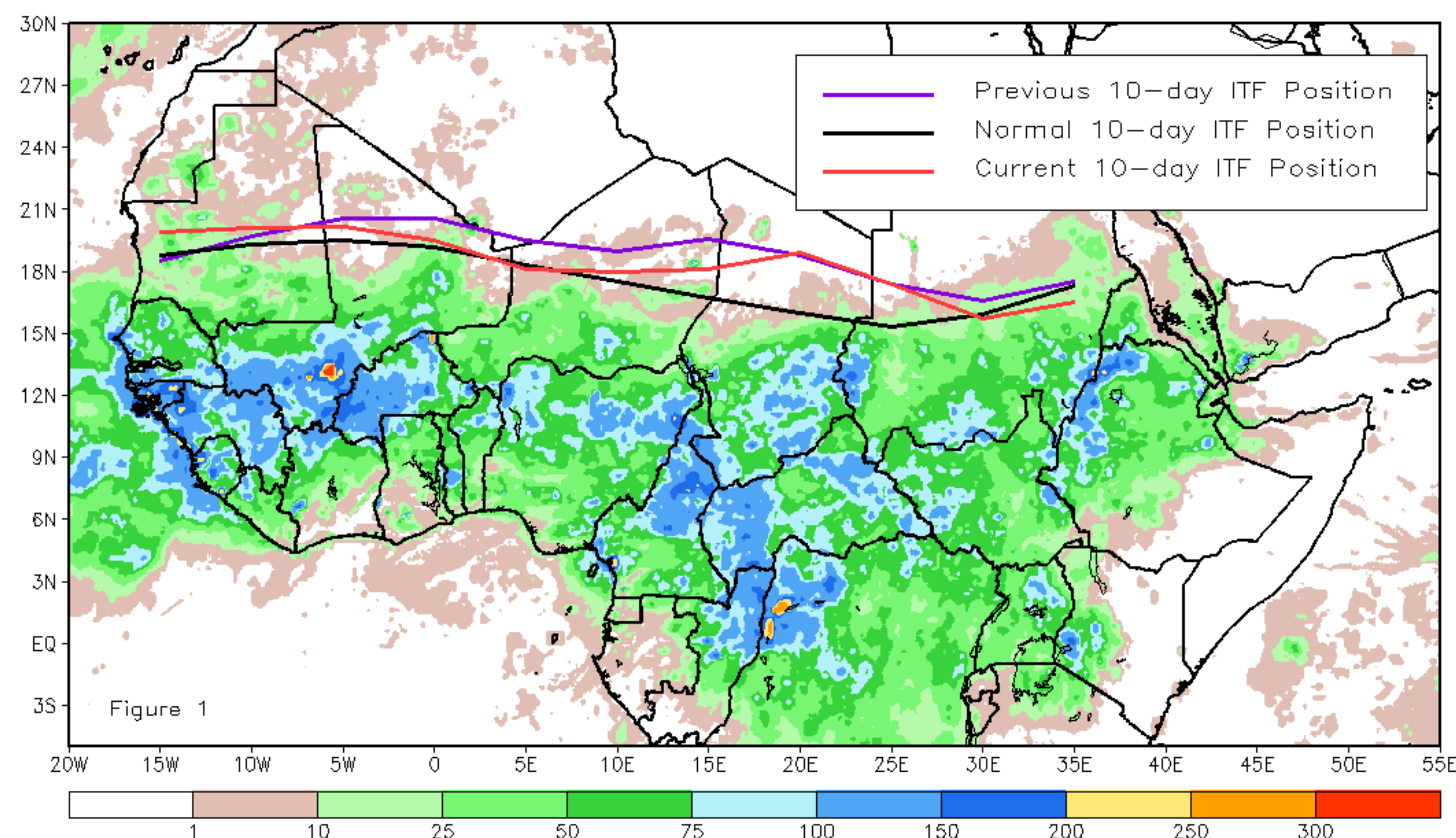
CPC Africa Desk InterTropical (ITF) Front Analysis

September 2022, Dekad 1

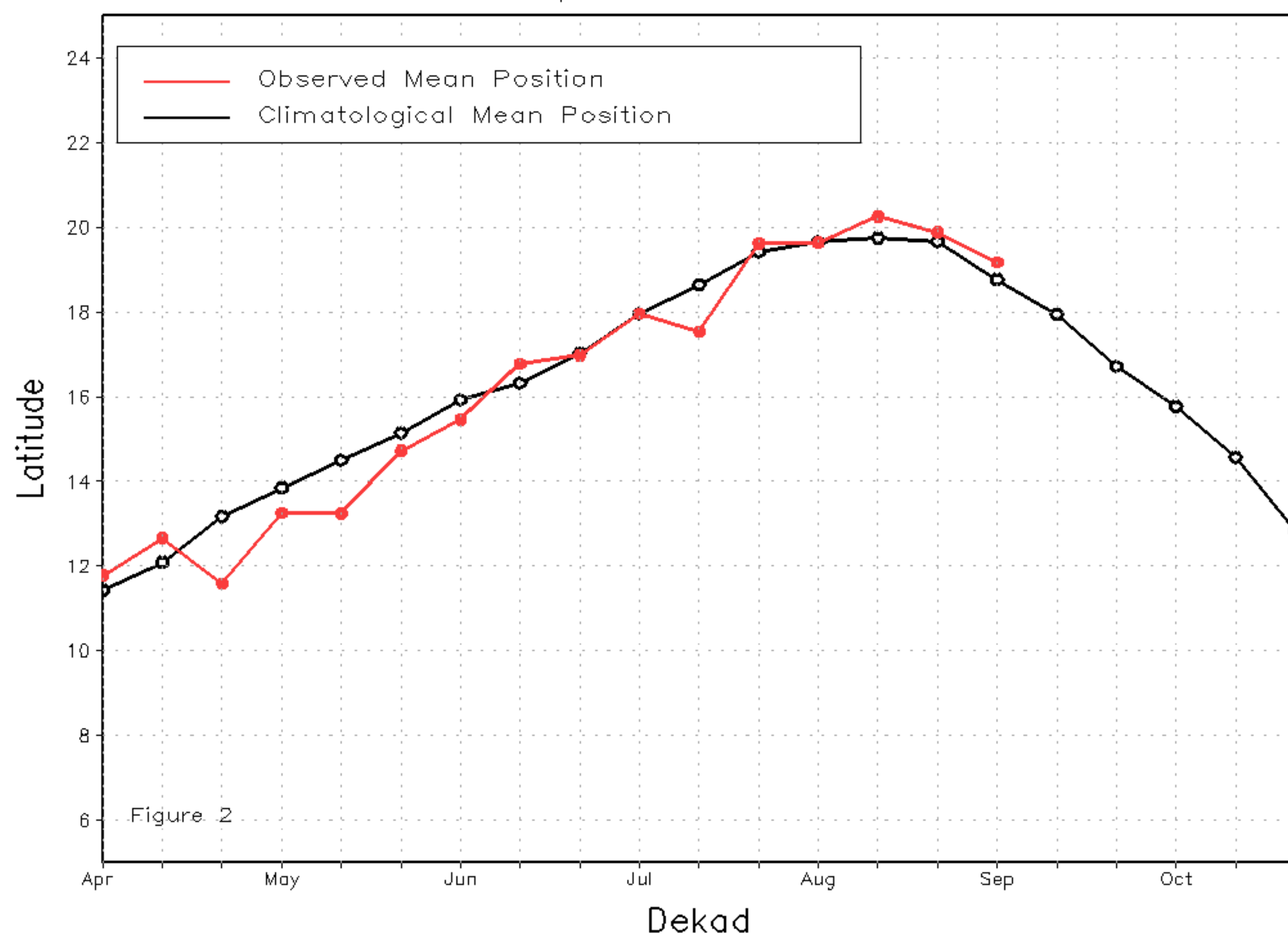
Discussion:

From 1-10 September, the ITF moved south relative to its previous position, except on the western side, it moved north. This resulted in an overall anomalous northerly position. The western (10W-10E) portion of the ITF was located approximately at 19.2N, which was above the climatology position by 0.4 degree. The eastern (20E-35E) portion of the ITF was approximated at 17.1N, which was above the climatological position by 1.0 degree. Figure 1 displays the current position of the ITF relative to the long-term average position during the 1st dekad of September and its previous position during the 3rd dekad of August. Figures 2 and 3 are time series, illustrating the latitudinal values of the western and eastern portions of the ITF, respectively, and their seasonal evolutions since the beginning of April 2022.

Current vs. Normal Dekadal ITF Position
and RFE Accumulated Precipitation (mm)
September 2022, Dekad 1



Mean Western Portion of the ITF: Averaged 10W to 10E
As of: September 2022, Dekad 1



Mean Eastern Portion of the ITF: Averaged 20E to 35E
As of: September 2022, Dekad 1

