



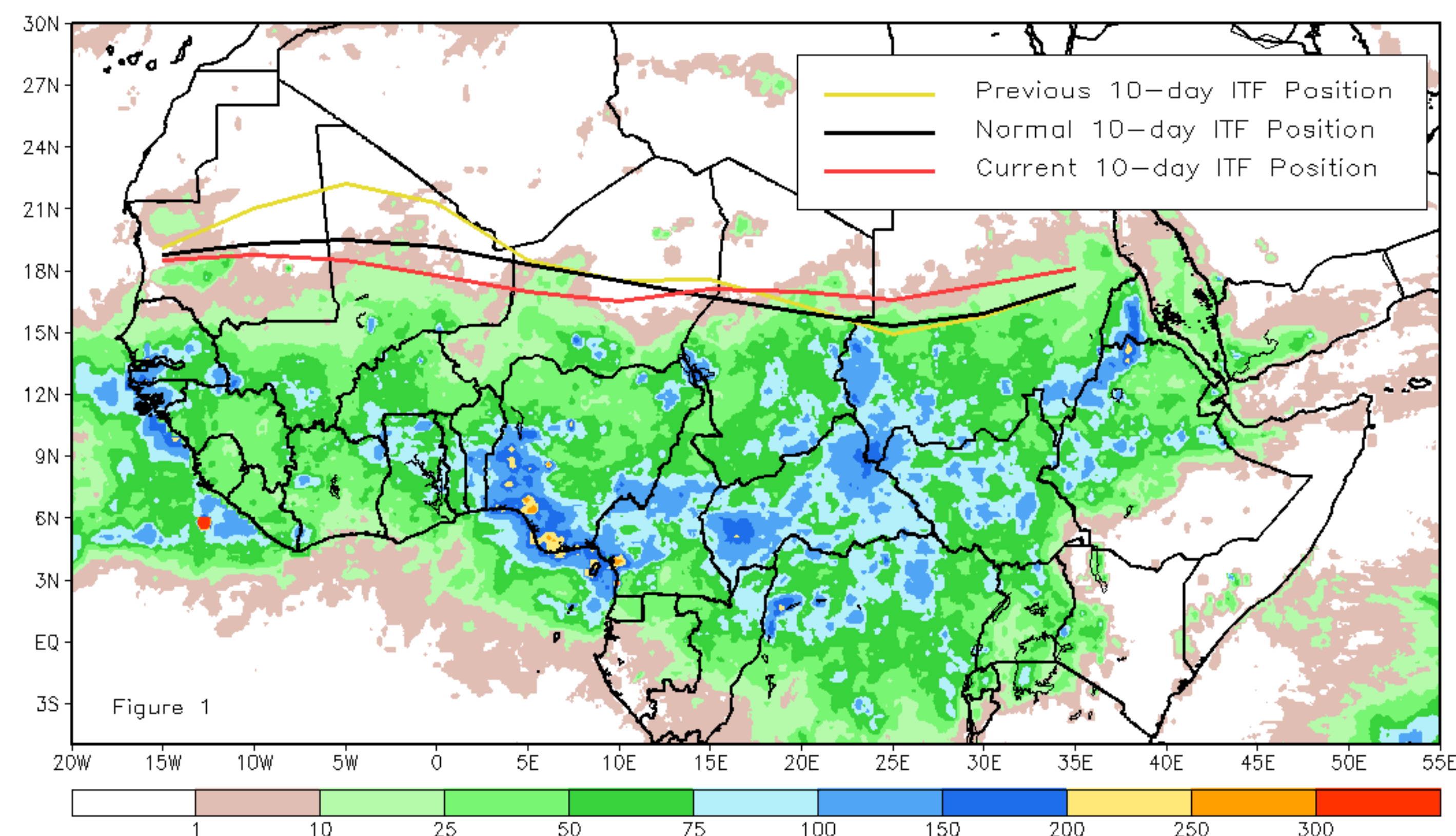
CPC Africa Desk InterTropical (ITF) Front Analysis

September 2021, Dekad 1

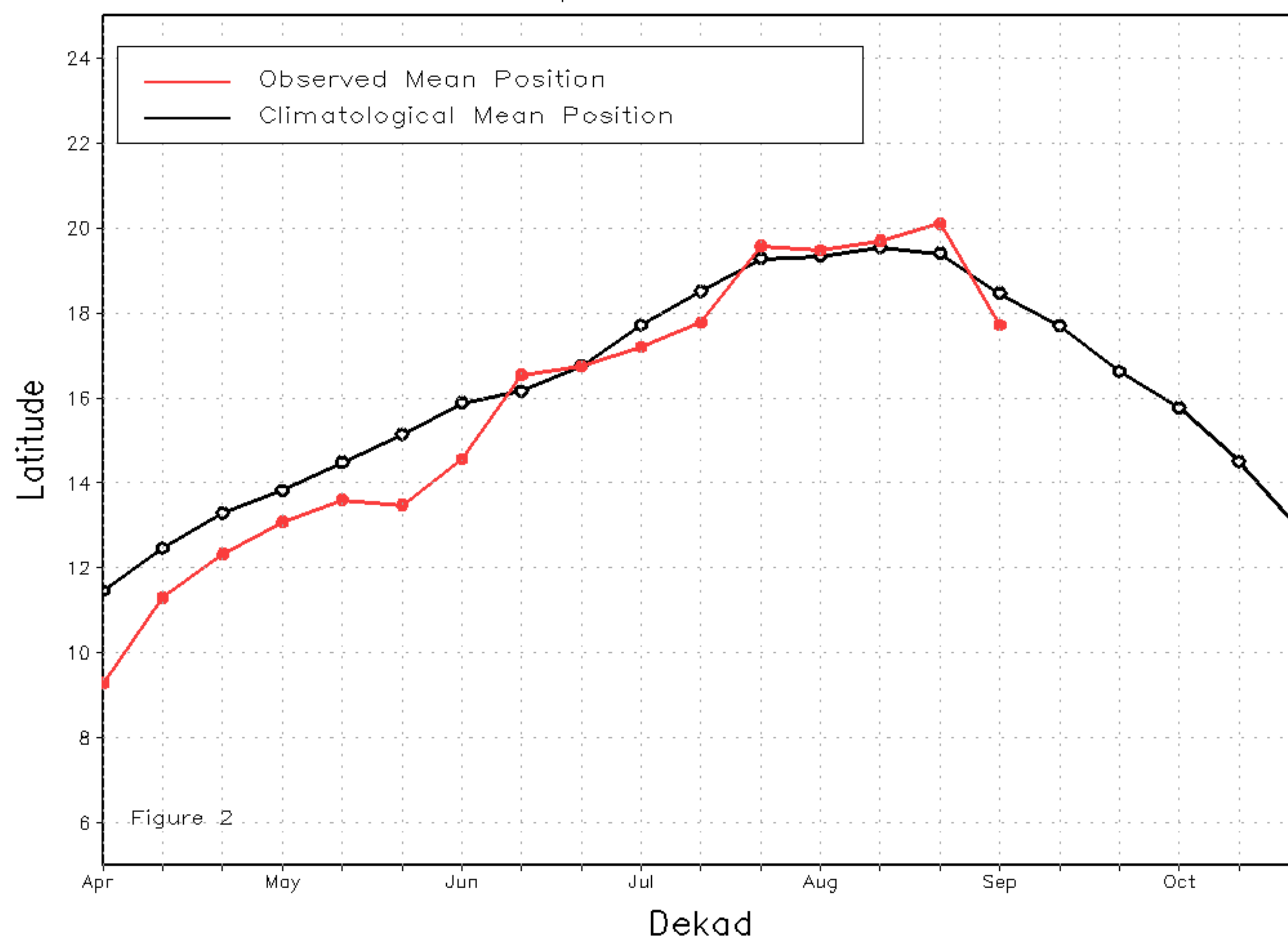
Discussion:

From 01-10 of September, the western part of the ITF moved significantly to the south compared to its previous dekad position. In contrast, the eastern part of the ITF moved slightly to the north compared to its previous dekad position. The western (10W-10E) portion of the ITF was located approximately at 18.1N, which was south to the climatological position centered at 18.8N. This position of the ITF explains the attenuation of rainfall across the far northern part of Senegal, southern Mauritania and central Niger. The eastern (20E-35E) portion of the ITF was located at 16.5N, which was north to the climatological position centered at 16.1N. This position could explain the increase of rainfall across central Chad, central Sudan, Eritrea and northwestern Ethiopia. Figure 1 shows the current position of the ITF relative to the long-term average position during the 1st dekad of September and its previous position during the 3rd dekad of August. Figures 2 and 3 are time series, illustrating the latitudinal values of the western and eastern portions of the ITF, respectively, and their seasonal evolutions since the beginning of April, 2021.

Current vs. Normal Dekadal ITF Position
and RFE Accumulated Precipitation (mm)
September 2021, Dekad 1



Mean Western Portion of the ITF: Averaged 10W to 10E
As of: September 2021, Dekad 1



Mean Eastern Portion of the ITF: Averaged 20E to 35E
As of: September 2021, Dekad 1

