



CPC Africa Desk InterTropical (ITF) Front Analysis

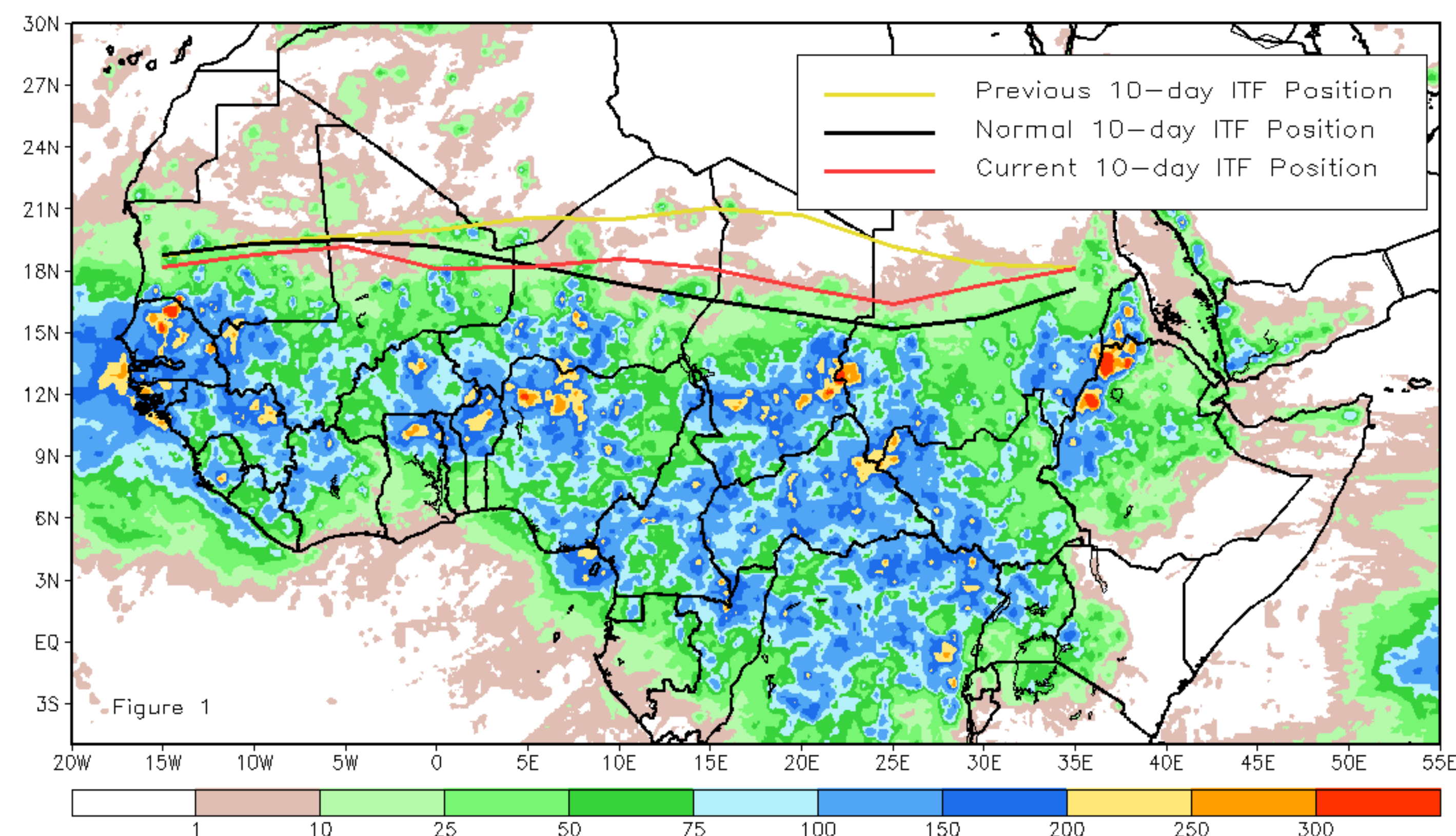
September 2020, Dekad 1

Discussion:

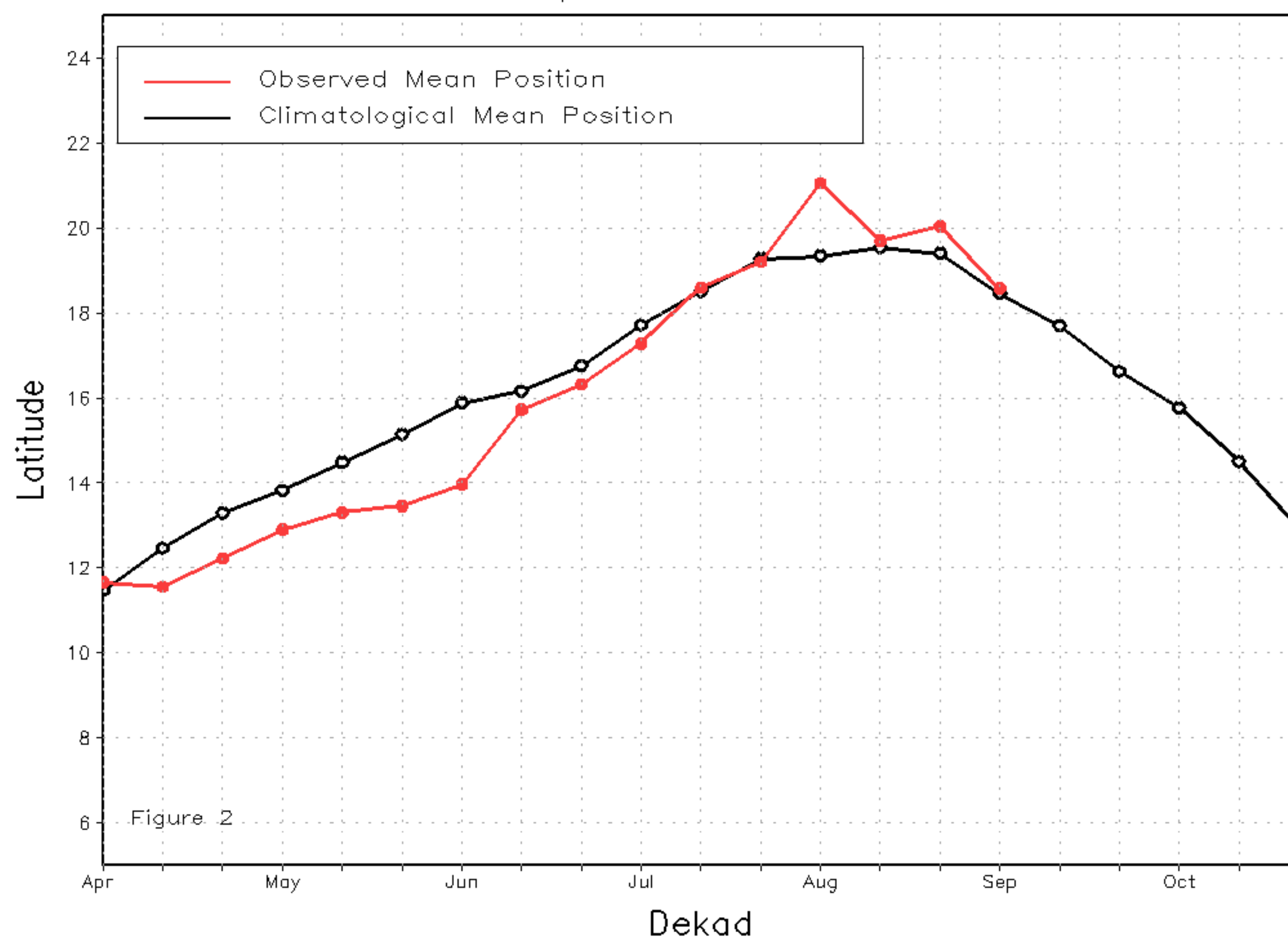
From September 01-10, the ITF has moved southward compare to the previous dekad. The western part has moved slightly close to the climatological position between 15W-5W which could explain the a reduction of rainfall over the southern part of Mauritania. In contrast, the eastern part has pushed drastically southward with a diminution of rainfall over the central part of Chad and Sudan. The mean eastern (20E-35E) portion of the ITF was located at 17.3N, which was well to the north of the mean position by 1.2 degrees. This abnormal southerly position for the ITF led to light rains over central Chad and central Sudan. Figure 1 shows the current position of the ITF relative to the climatological position during the 1st dekad of September and its previous position during the 3rd dekad of August. Figures 2 and 3 are time series, illustrating the latitudinal values of the western and eastern portions of the ITF, respectively, and their seasonal evolutions since April, 2020.

Current vs. Normal Dekadal ITF Position
and RFE Accumulated Precipitation (mm)

September 2020, Dekad 1



Mean Western Portion of the ITF: Averaged 10W to 10E
As of: September 2020, Dekad 1



Mean Eastern Portion of the ITF: Averaged 20E to 35E
As of: September 2020, Dekad 1

