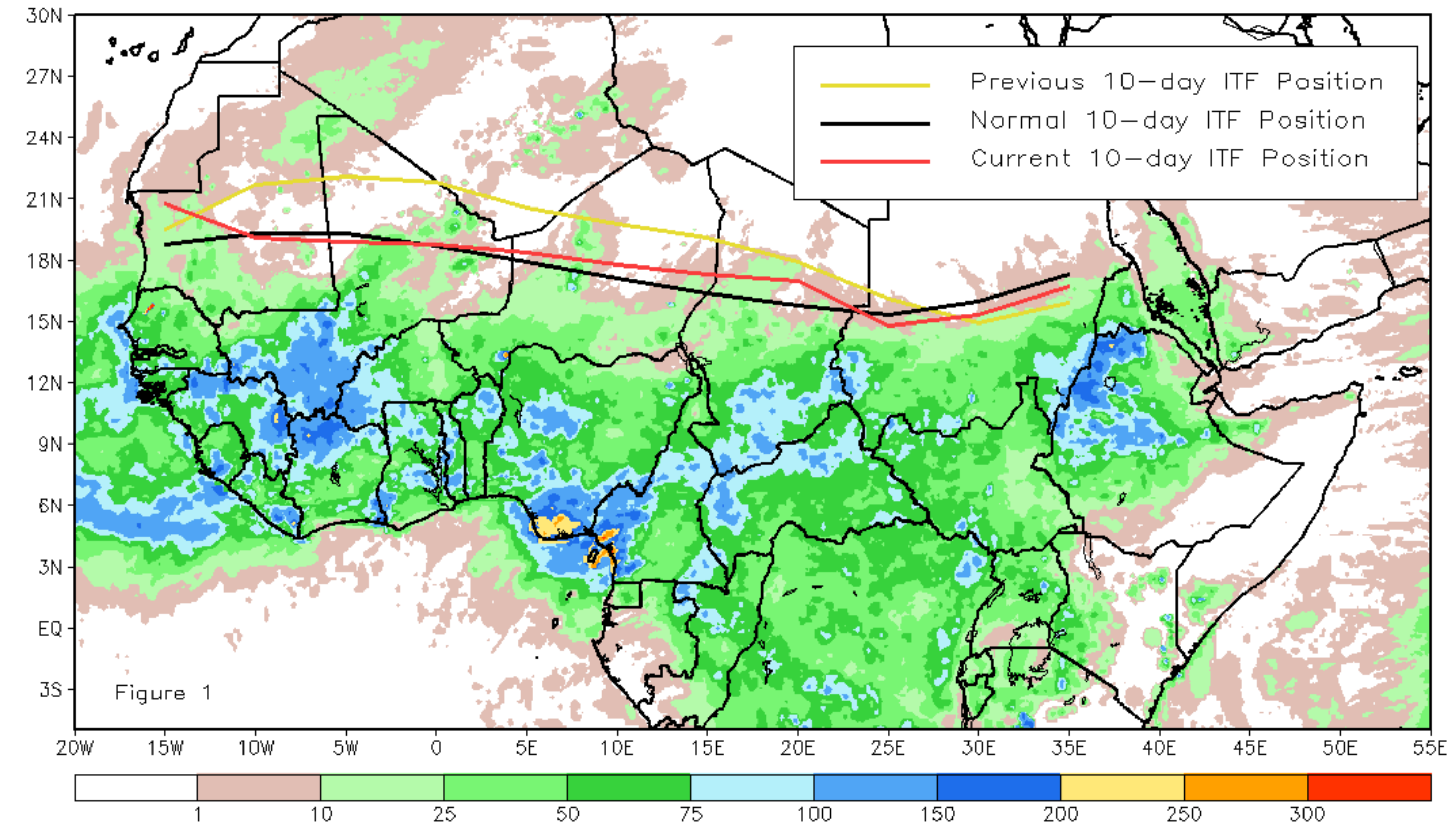


CPC Africa Desk InterTropical (ITF) Front Analysis September 2019, Dekad 1

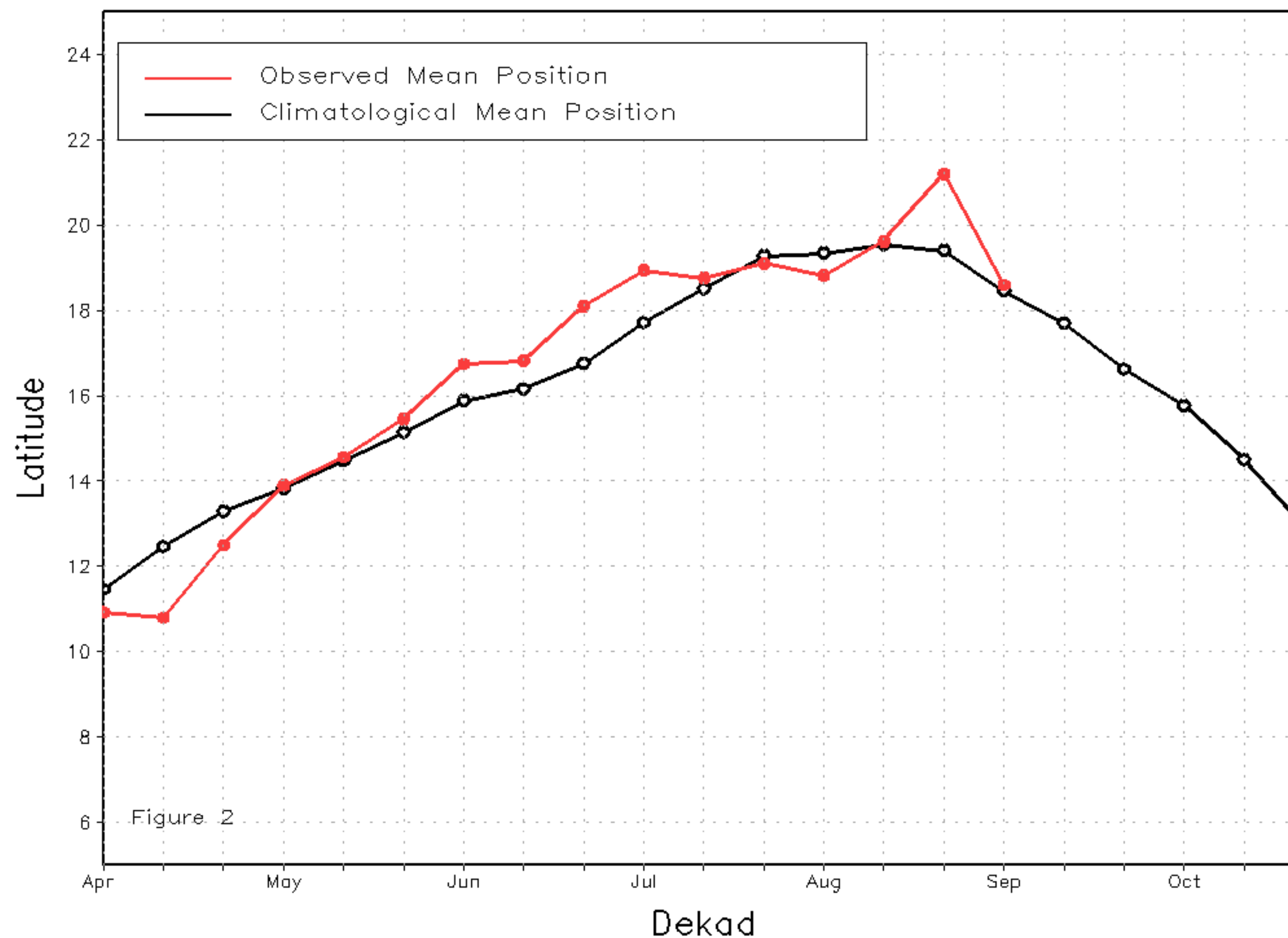
Discussion:

From September 01-10, the ITF has moved southward compared to the previous decade excepted between 30E-35E. The mean position of the ITF is approximated at 18.6 between 10W-10E, which represents a 2.6 southward movement compared to the previous decade. Between 20E-35E, the mean position is 15.9 which represents the same position as previous decade. The ITF is located about the same position as the normal position except in the far west which could explain the enhancement of rain experienced over Senegal and south Mauritania. Between 25E-35E, the ITF has moved significantly southward more at 25E. As a result, below average rainfall was observed over the central-eastern part of Sudan. The north-movement of the ITF in the far-western Africa could explained the continuation of flood and landslides reported over Mauritania, Senegal, southern Morocco. The pick in the far-eastern ITF also could explained the flood and landslides in Kenya and Uganda. Figure 1 shows the current position of the ITF relative to the long-term average position during the 3rd dekad of August and its previous position during the 2nd dekad of August. Figures 2 and 3 are time series, illustrating the latitudinal values of the western and eastern portions of the ITF, respectively, and their seasonal evolutions since April, 2019.

Current vs. Normal Dekadal ITF Position
and RFE Accumulated Precipitation (mm)
September 2019, Dekad 1



Mean Western Portion of the ITF: Averaged 10W to 10E
As of: September 2019, Dekad 1



Mean Eastern Portion of the ITF: Averaged 20E to 35E
As of: September 2019, Dekad 1

