



# CPC Africa Desk InterTropical (ITF) Front Analysis

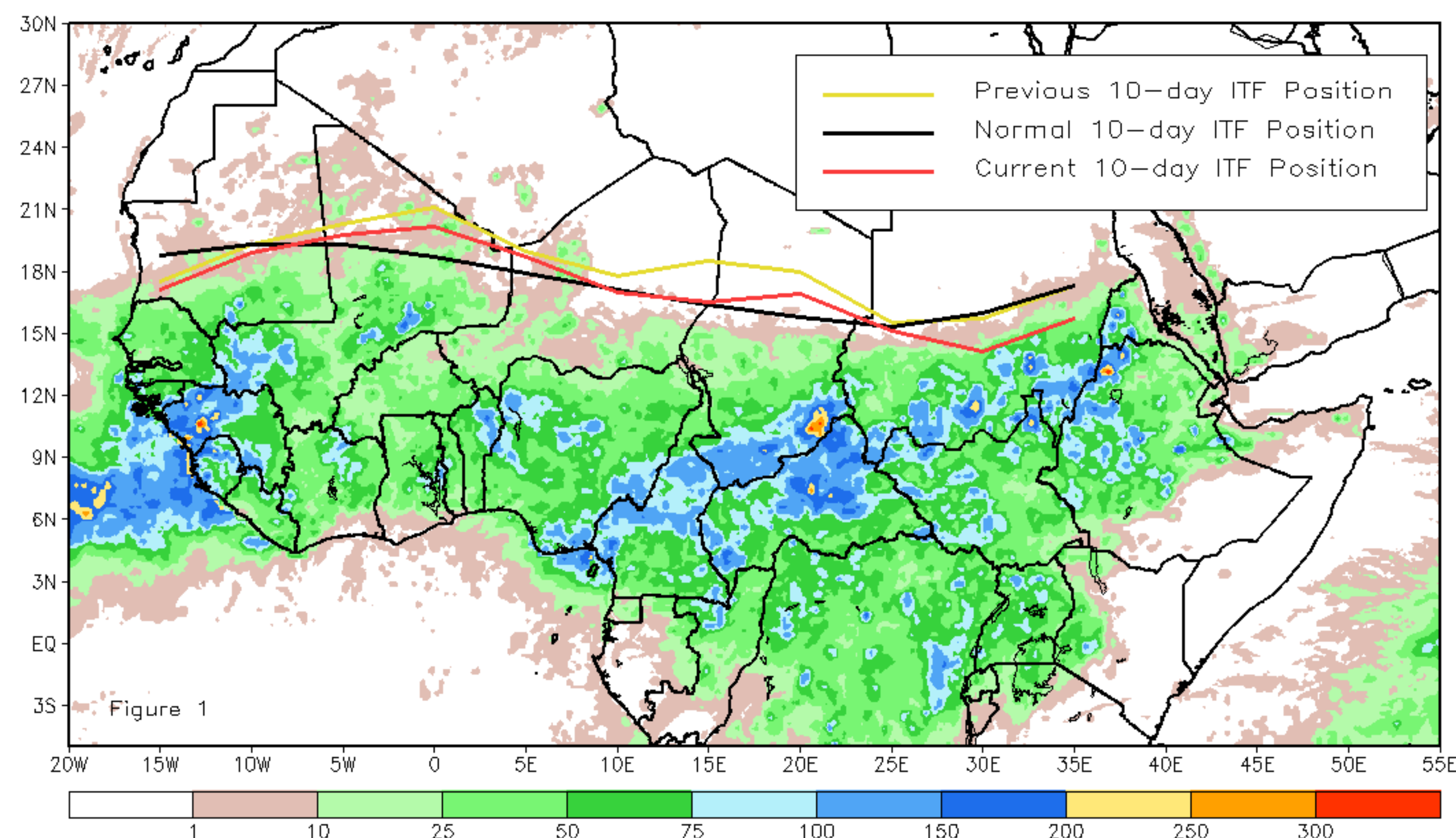
## September 2017, Dekad 1

### Discussion:

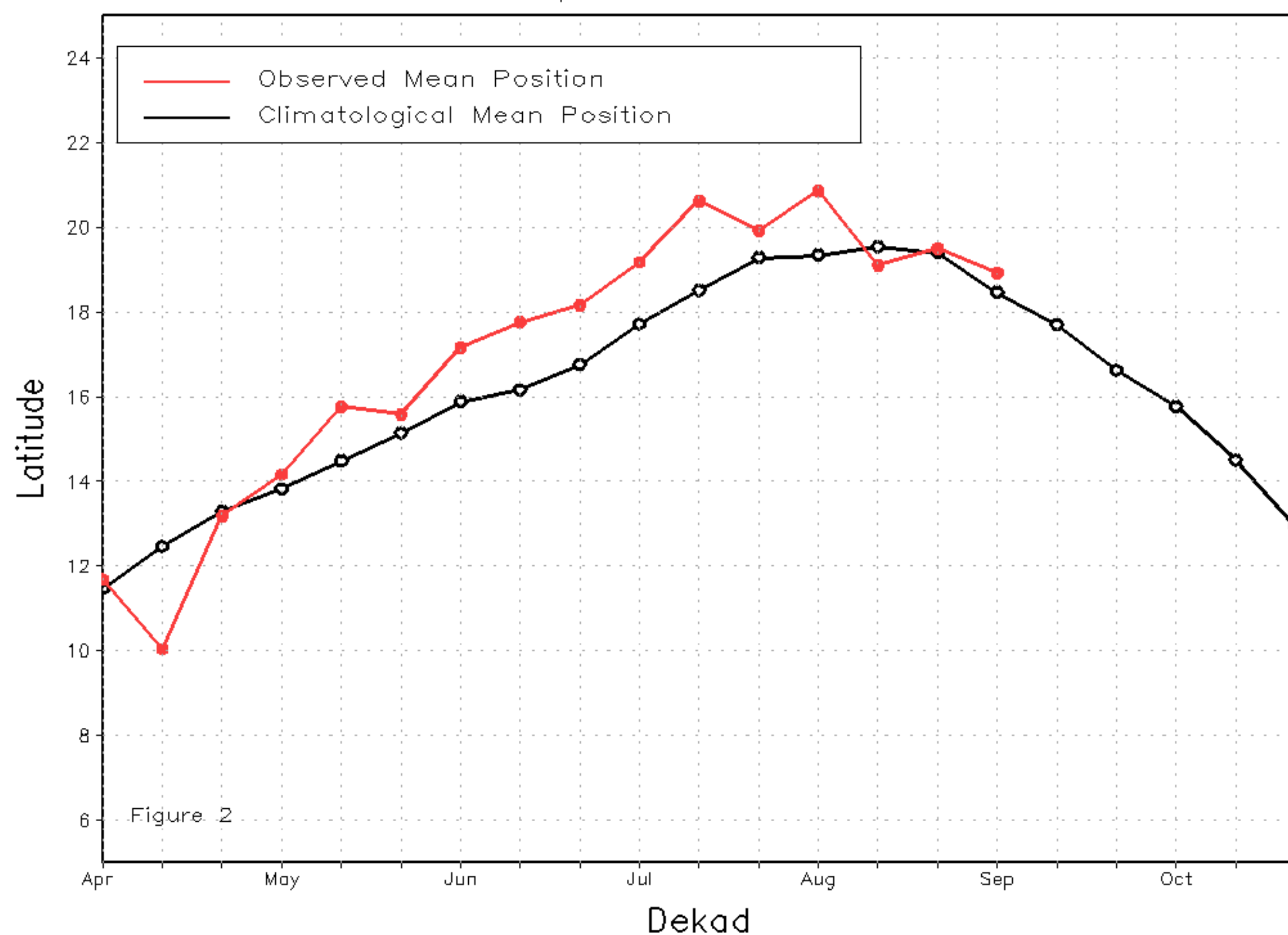
From September 1-10, the ITF continued its equatorward retreat with lesser amounts of rainfall received along the lower Sahara and upper Sahel. The mean western (10W-10E) portion of the ITF was approximated at 18.9 degrees N and was slightly above of the mean position by 0.4 degrees. The anomalously high position was associated with moderate to locally heavy rainfall over parts of Mali and Mauritania. The mean eastern (20E-35E) portion of the ITF was approximated at 15.4 degrees N and was to the south of the average position by 0.7 degrees. The mean eastern position was more anomalous to the south than the previous dekadal anomaly during late August, suggesting a drying trend and earlier cessation of seasonal rainfall in the region. Figure 1 shows the current position of the ITF relative to its climatological position during the 1st dekad of September and its previous position during the 3rd dekad of August. Figures 2 and 3 are time series, illustrating the mean latitudinal values of the western and eastern portion of the ITF, respectively, and their evolutions since April, 2017.

Current vs. Normal Dekadal ITF Position  
and RFE Accumulated Precipitation (mm)

September 2017, Dekad 1



Mean Western Portion of the ITF: Averaged 10W to 10E  
As of: September 2017, Dekad 1



Mean Eastern Portion of the ITF: Averaged 20E to 35E  
As of: September 2017, Dekad 1

