



CPC Africa Desk InterTropical (ITF) Front Analysis

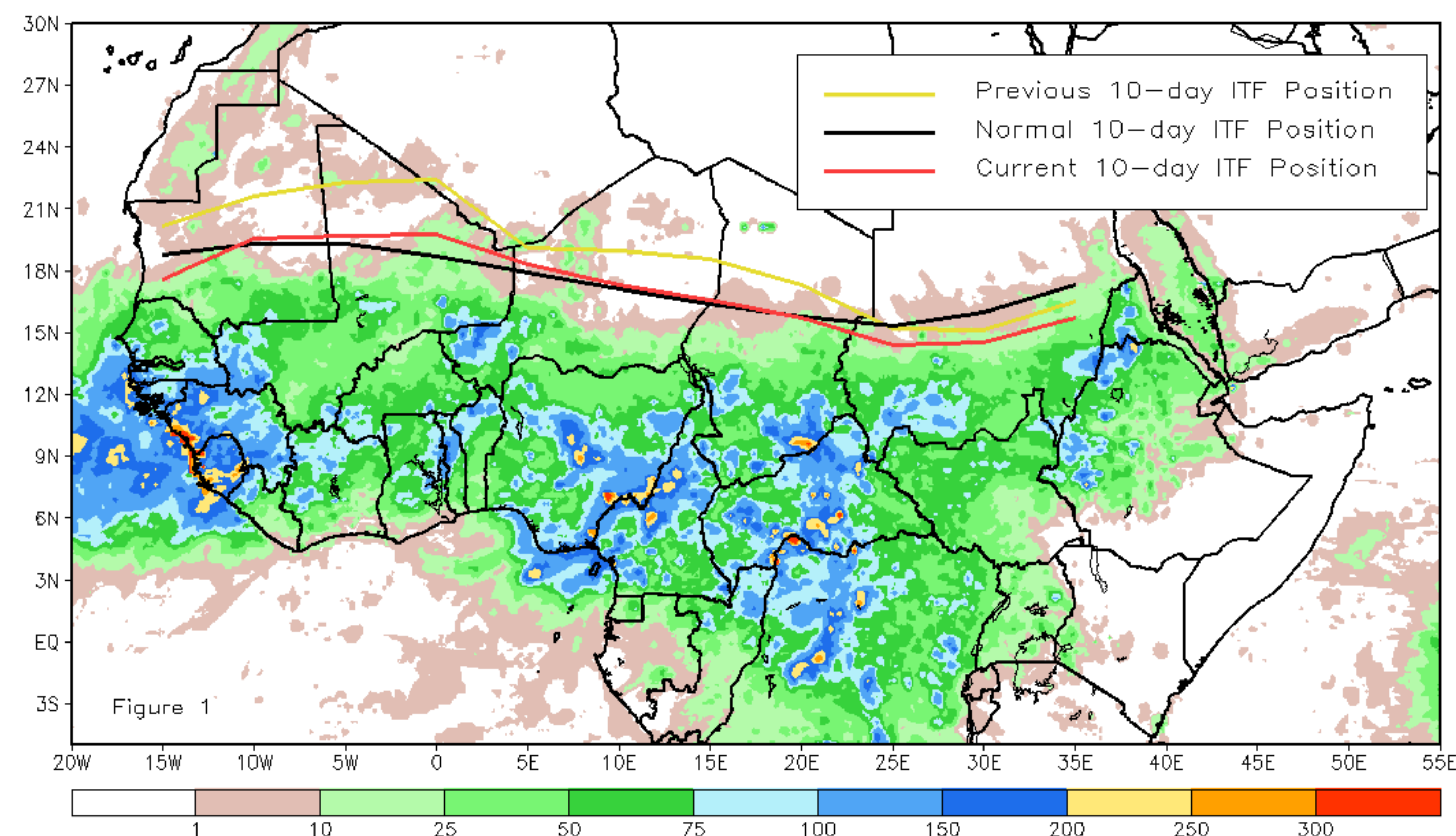
September 2016, Dekad 1

Discussion:

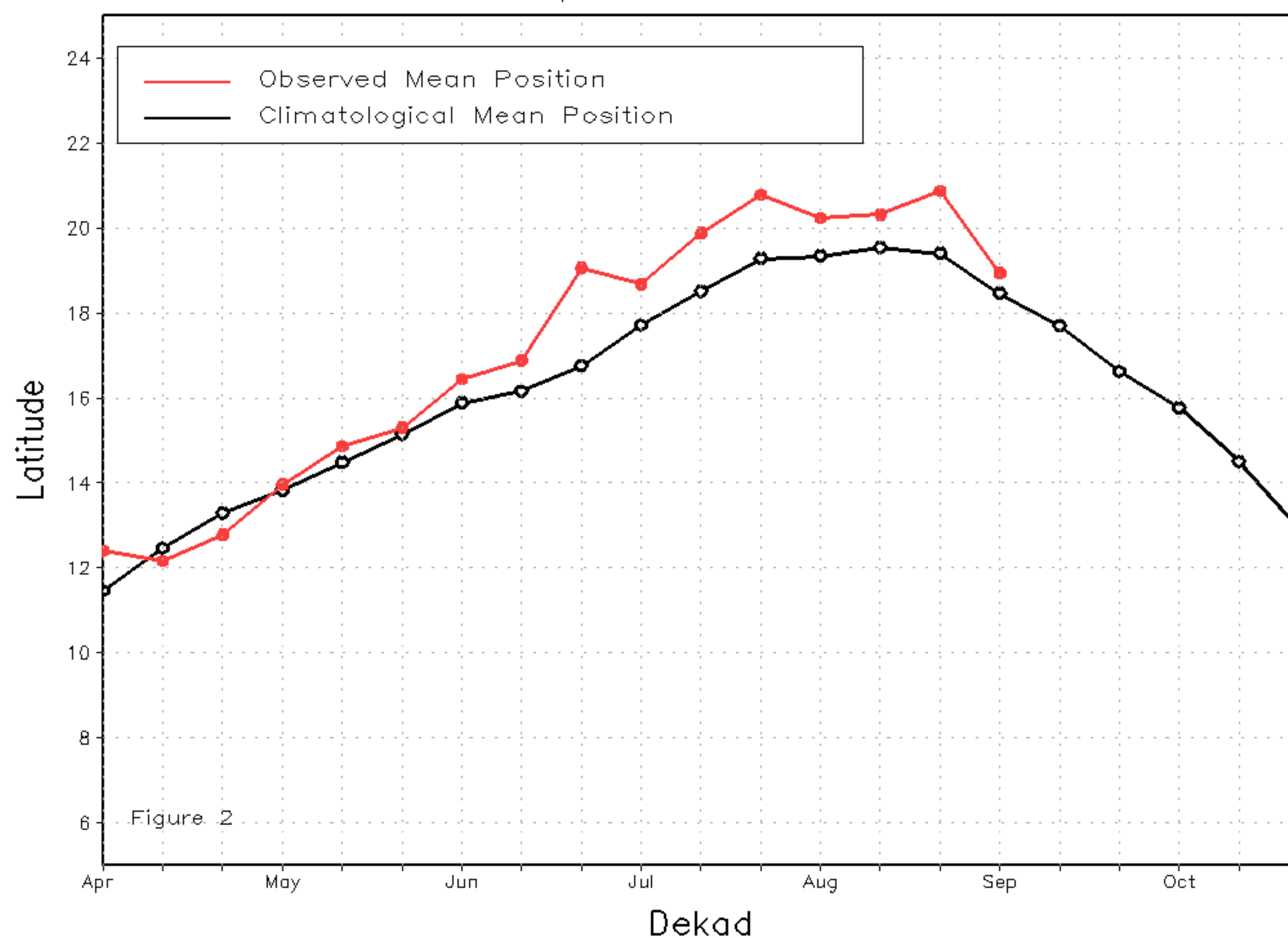
From September 1-10, the position of the ITF experienced a significant equatorward retreat compared to its previous position in late August throughout many countries in Africa. From 10W-10E, the mean position of the ITF was located approximately at 18.9N, which fell nearly 2.0 degrees on average south of the previous position, however remained slightly the climatological normal position for early September. From 20E-35E, the mean position of the ITF was located at 15.1N, and fell below the climatological normal position (16.1N) by nearly a degree in latitude. Figure 1 shows the current position of the ITF relative to its climatological position during the 1st dekad of September, and its previous location during the 3rd dekad of August. Figures 2 and 3 are time series, illustrating the mean latitudinal values of the western and eastern portions of the ITF, respectively, and their evolutions since April, 2016.

Current vs. Normal Dekadal ITF Position
and RFE Accumulated Precipitation (mm)

September 2016, Dekad 1



Mean Western Portion of the ITF: Averaged 10W to 10E
As of: September 2016, Dekad 1



Mean Eastern Portion of the ITF: Averaged 20E to 35E
As of: September 2016, Dekad 1

