



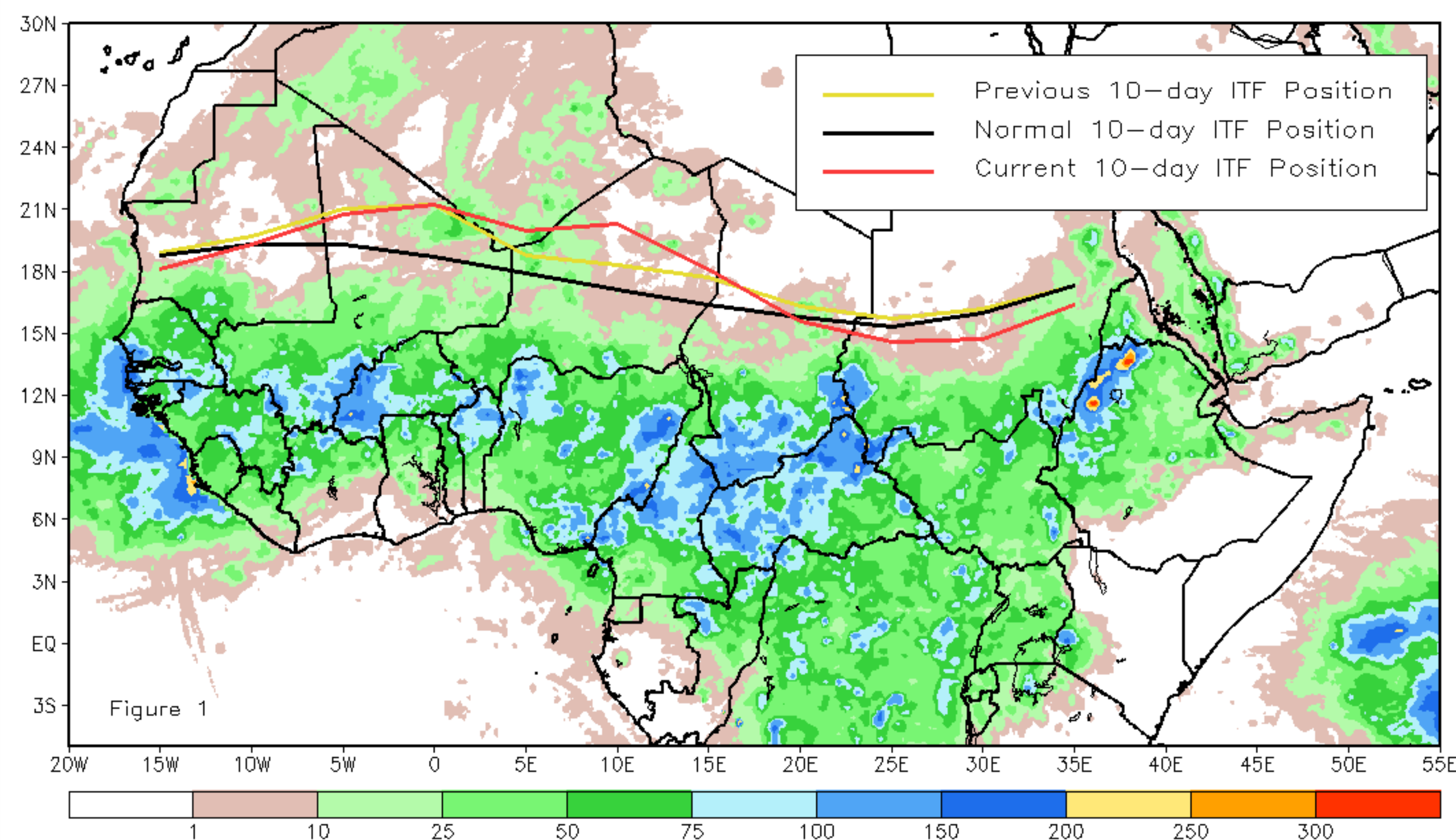
# CPC Africa Desk InterTropical (ITF) Front Analysis

## September 2015, Dekad 1

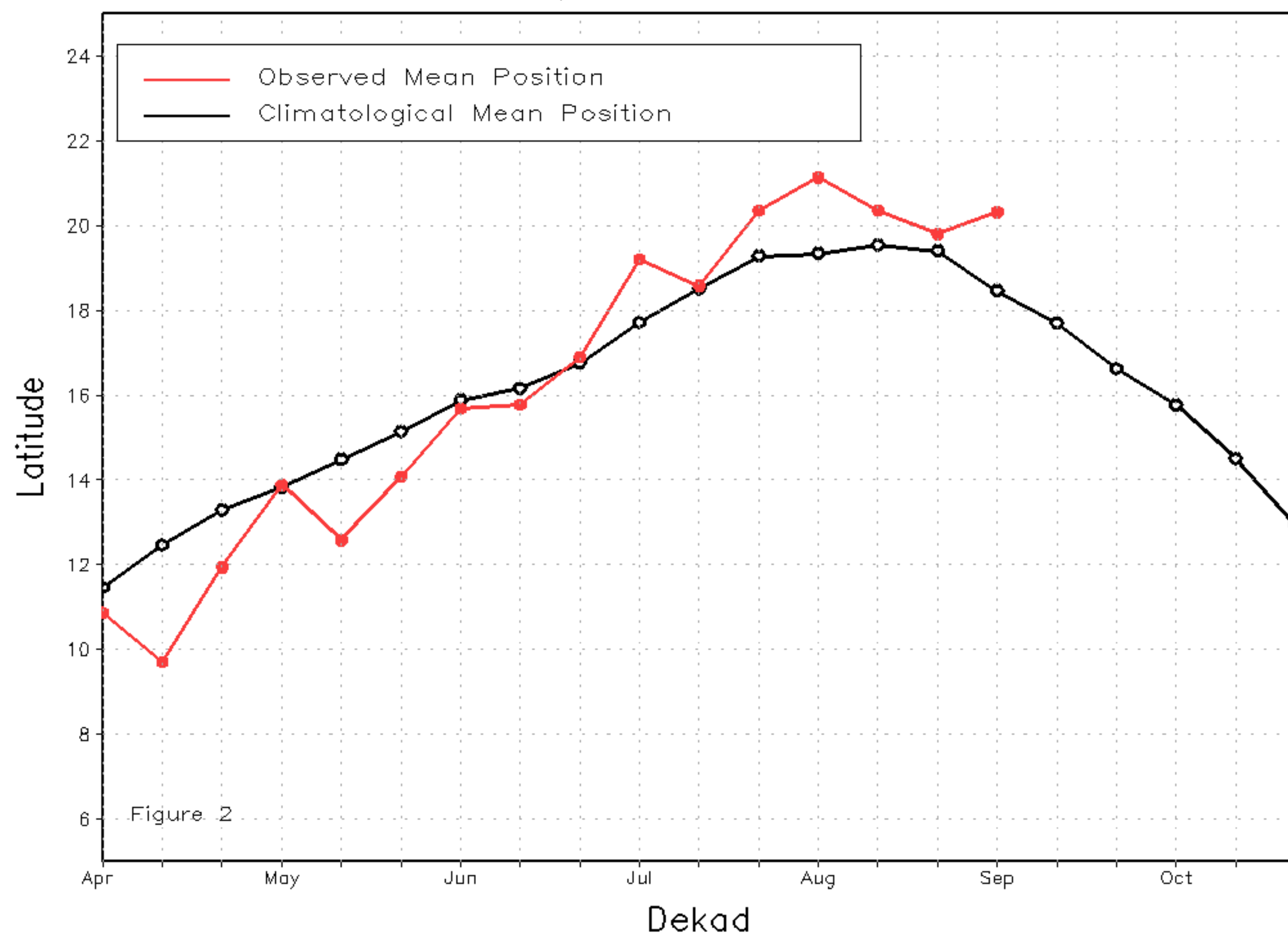
### Discussion:

During the first dekad of September, the general position of the ITF in the East withdrew from its previous position at the end of August while advancing slightly north in the West. The mean western portion of the ITF (10W-10E) was approximated at 20.3 degrees N, above the normal climatological position (18.5) for the beginning of September. The significant northward displacement of the ITF position over Mali and Niger was able to trigger well-distributed rainfall for these Northern Sahelian areas. The mean eastern portion of the ITF (20E-35E) was approximated at 15.3 degrees North, remaining below the normal climatological position (16.1) for the beginning of September. Figure 1 illustrates the current position of the ITF relative to its climatological position during the first dekad of September, and its previous position during the third dekad of August. Figures 2 and 3 are time series, illustrating the mean latitudinal values of the western and eastern portions of the ITF, respectively, and their evolution since April, 2015.

Current vs. Normal Dekadal ITF Position  
and RFE Accumulated Precipitation (mm)  
September 2015, Dekad 1



Mean Western Portion of the ITF: Averaged 10W to 10E  
As of: September 2015, Dekad 1



Mean Eastern Portion of the ITF: Averaged 20E to 35E  
As of: September 2015, Dekad 1

