



CPC Africa Desk InterTropical (ITF) Front Analysis

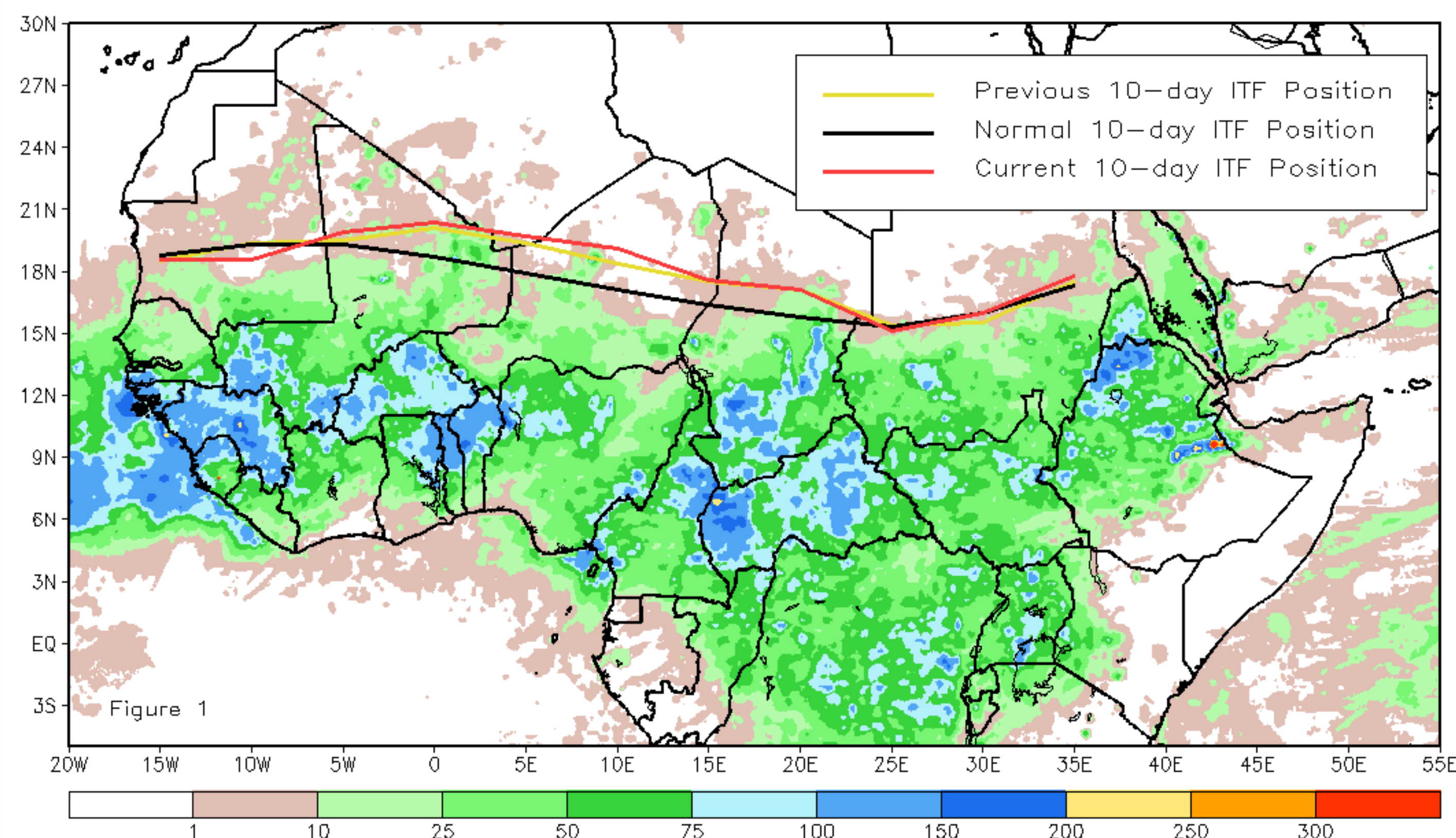
September 2014, Dekad 1

Discussion:

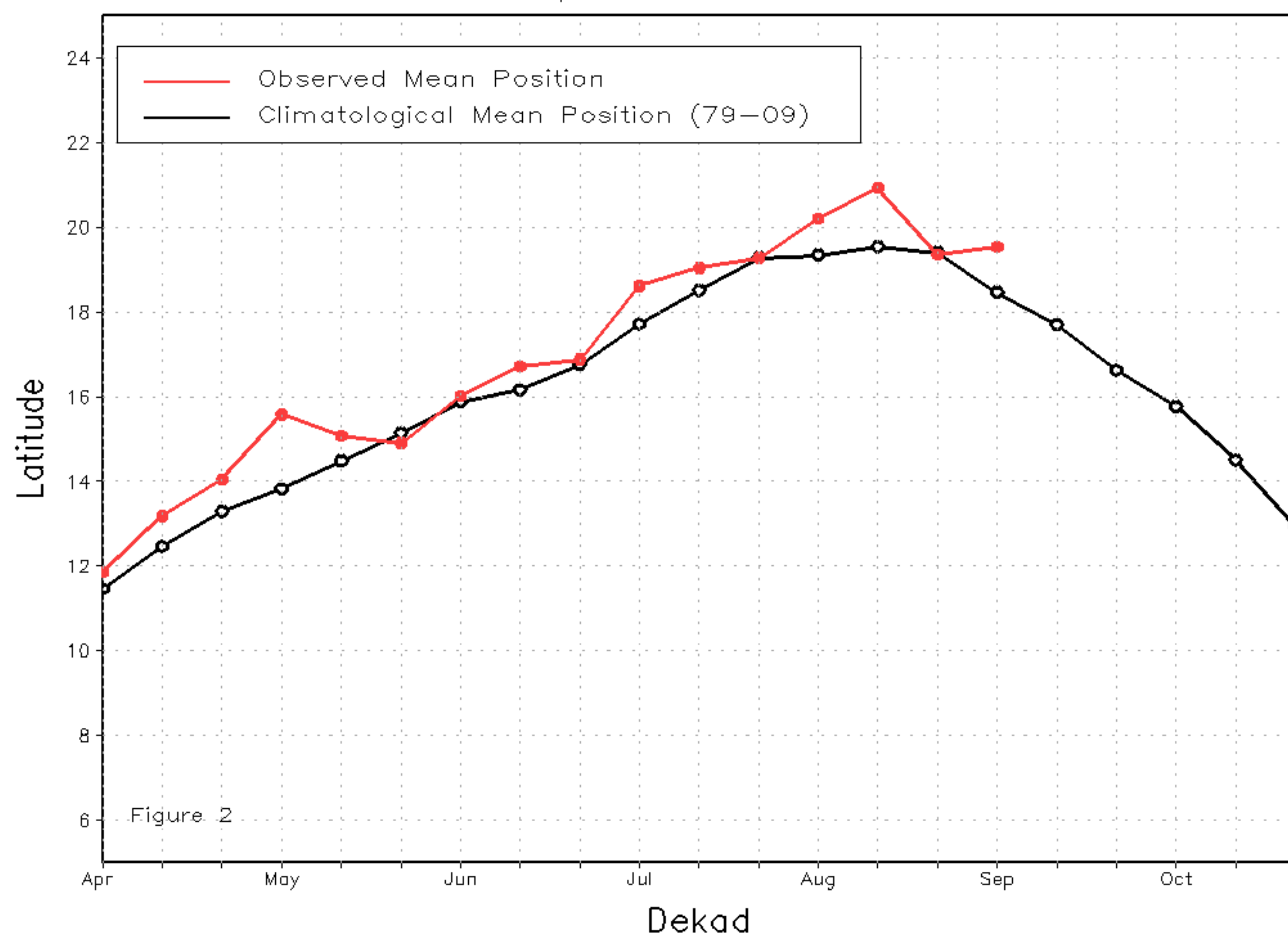
From September 1-10, 2014, the ITF in both eastern and western sections of Africa was located poleward from its position during the previous dekad. Climatologically, the ITF is expected to be retreating equatorward at this time. The mean western portion of the ITF (10W to 10E) was approximated at 19.5N, which was 0.2 degrees north of the previous dekads position and 1.0 degree north of the mean climatological position. According to climatology, the ITF should be progressing quickly to the south during the months of September and October which makes the ITFs position during the first dekad of September anomalous. The result was rain reaching farther north into Mali and Niger than usual. The mean eastern portion of the ITF (20E to 35E) was approximated at 16.5N, which is 0.4 degrees north of the mean climatological position and 0.1 degrees north of the previous dekads position. The close position of the ITF to climatology resulted in seasonal rainfall across eastern Africa with localized areas in South Sudan and southern Sudan receiving heavy rains. Figure 1 shows the current ITF position relative to the positions of climatology for the first dekad of September, and its previous position during the third dekad of August. Figures 2 and 3 are time series illustrating the mean latitudinal values of the western and eastern portions of the ITF, respectively, and their observed progressions since April, 2014.

Current vs. Normal Dekadal ITF Position
and RFE Accumulated Precipitation (mm)

September 2014, Dekad 1



Mean Western Portion of the ITF: Averaged 10W to 10E
As of: September 2014, Dekad 1



Mean Eastern Portion of the ITF: Averaged 20E to 35E
As of: September 2014, Dekad 1

