



CPC Africa Desk InterTropical (ITF) Front Analysis

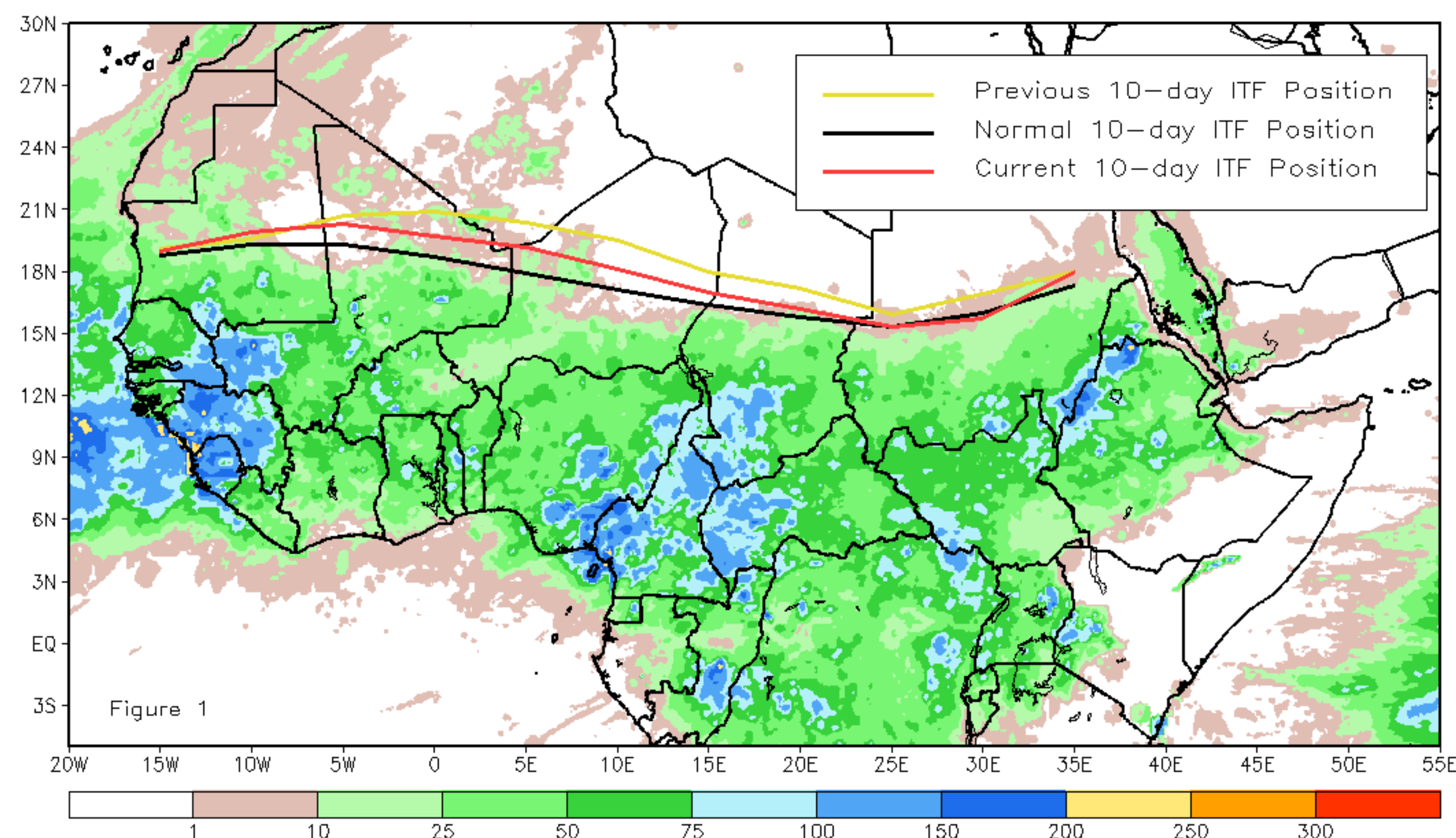
September 2013, Dekad 1

Discussion:

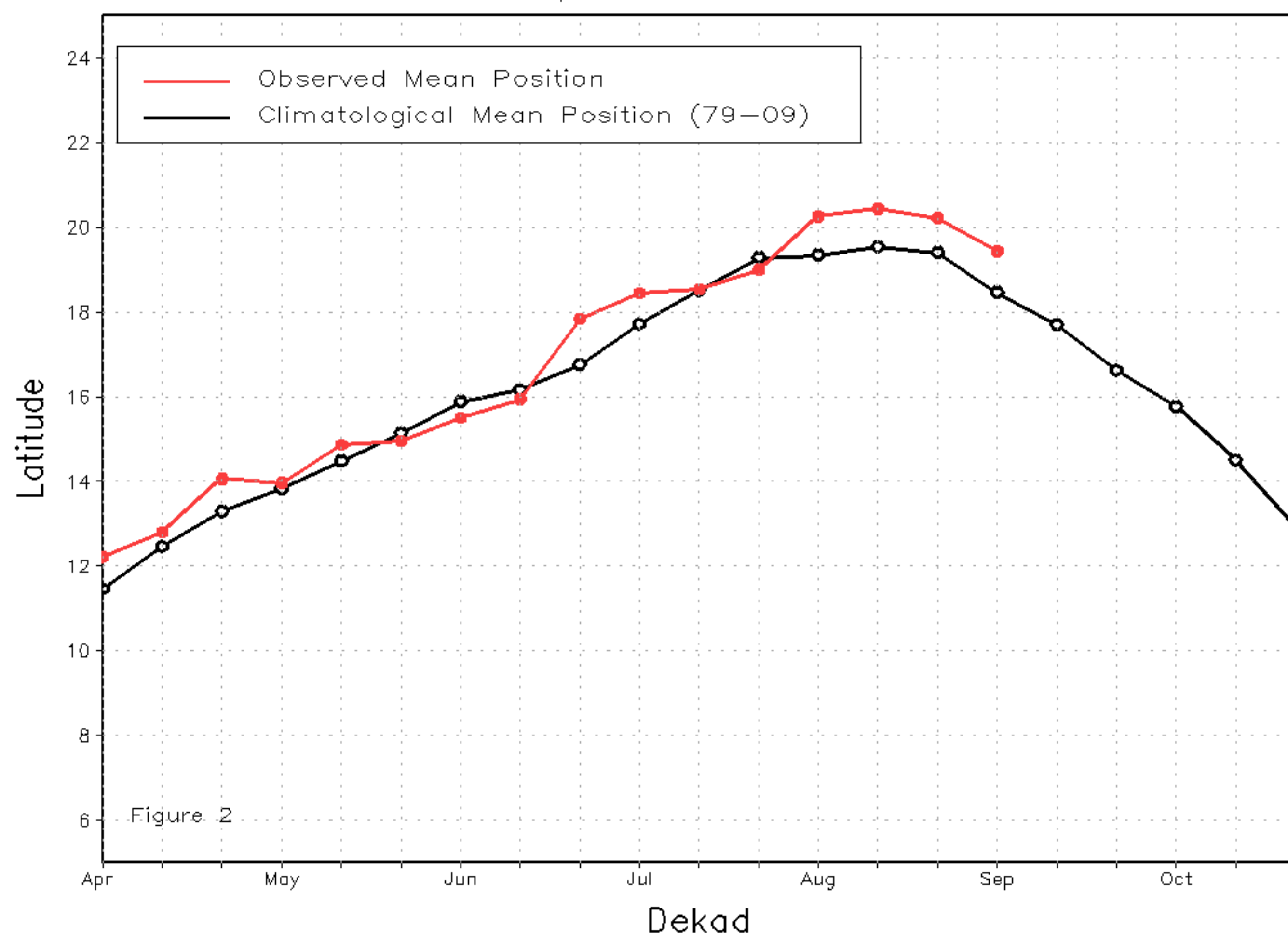
From September 1-10, 2013, the ITF continued to be displaced north of climatology across West Africa while remaining close to its climatological position over eastern Africa. The mean western portion of the ITF (10W-10E) was located approximately at 19.4 degrees North, which is 0.9 degrees north of the mean climatological position. This marked the 4th consecutive dekad where the western portion of the ITF was nearly 1 degree north of average. This has resulted in above-average rains across the Sahel during the past thirty days. The mean eastern portion of the ITF (20E-35E) was located approximately at 16.3 degrees North, which was 0.2 degrees north of the mean climatological position. For the last three dekads, the ITF over eastern Africa has progressed equatorward similar to climatology resulting in near average rainfall amounts. Figure 1 shows the current ITF position relative to its long-term average position during the first dekad of September and its previous position during the third dekad of August. Figures 2 and 3 are time series, illustrating the mean latitudinal values of the western and eastern portion of the ITF, respectively, and their evolutions since April, 2013.

Current vs. Normal Dekadal ITF Position
and RFE Accumulated Precipitation (mm)

September 2013, Dekad 1



Mean Western Portion of the ITF: Averaged 10W to 10E
As of: September 2013, Dekad 1



Mean Eastern Portion of the ITF: Averaged 20E to 35E
As of: September 2013, Dekad 1

