

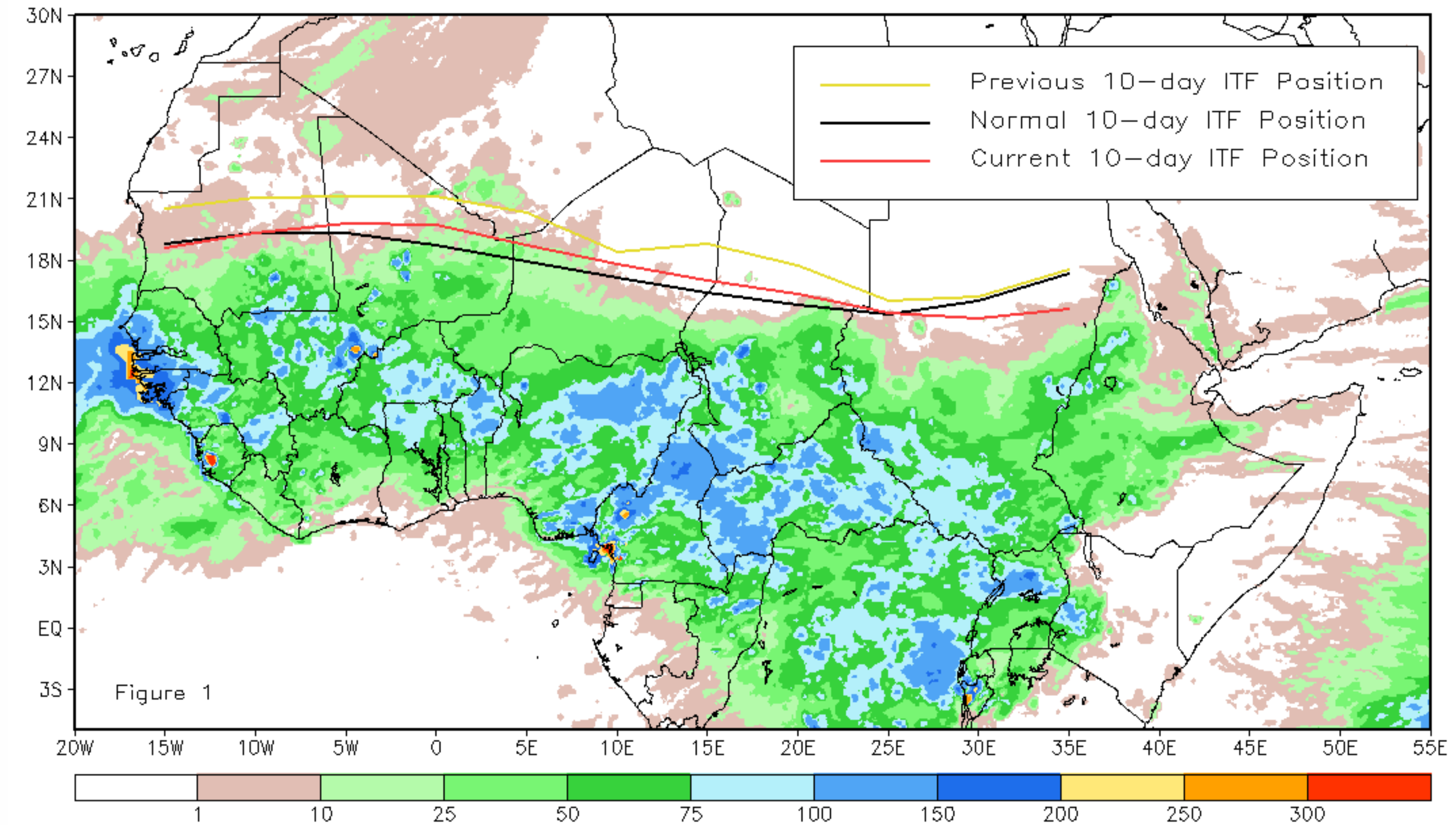


# CPC Africa Desk InterTropical (ITF) Front Analysis September 2012, Dekad 1

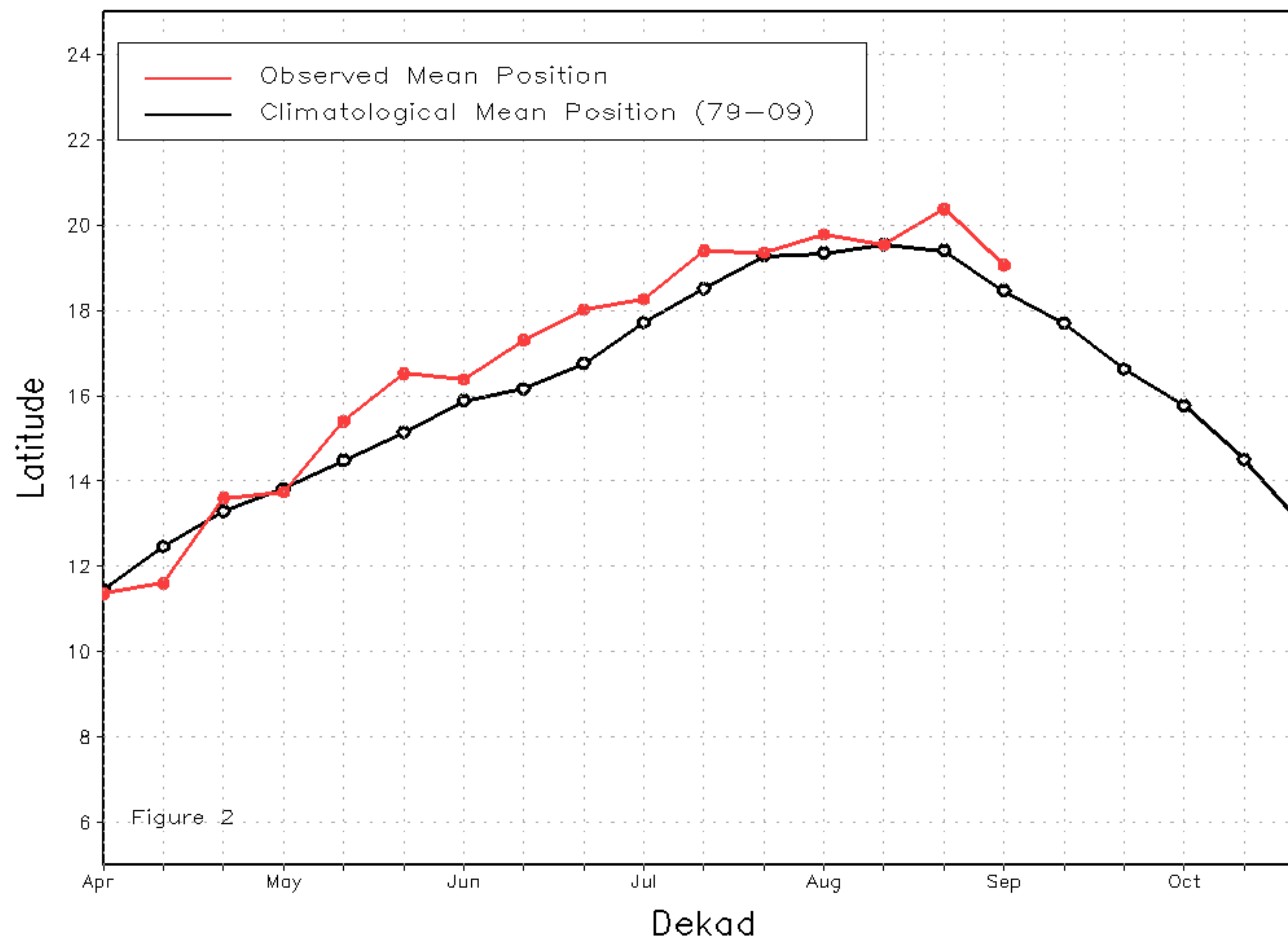
## Discussion:

From September 1-10, 2012, the ITF progressed southward after experiencing its northerlymost position during the final dekad of August. The mean western portion of the ITF (10W-10E) was located approximately at 19.1 degrees North which was still 0.6 degrees north of the mean climatological position for the first dekad of September. The anomalous position of the ITF across western Africa was associated with above-average and heavy rains throughout much of the Sahel including Nigeria, Burkina Faso and Mali. The mean eastern portion of the ITF (20E-35E) was located approximately at 15.6 degrees North which was 0.5 degrees south of the mean climatological position. This marked the first time since the first dekad of May that the mean eastern portion of the ITF was located south of climatology. Across the east, the first dekad of September saw the continuation of an equatorward retreat of the ITF since reaching its northerlymost position during the first dekad of August. Figure 1 shows the current ITF position relative to its long-term average position during the first dekad of September and its previous position during the third dekad of August. Figures 2 and 3 are time series, illustrating the mean latitudinal values of the western and eastern portion of the ITF, respectively, and their evolutions since April, 2012.

Current vs. Normal Dekadal ITF Position  
and RFE Accumulated Precipitation (mm)  
September 2012, Dekad 1



Mean Western Portion of the ITF: Averaged 10W to 10E  
As of: September 2012, Dekad 1



Mean Eastern Portion of the ITF: Averaged 20E to 35E  
As of: September 2012, Dekad 1

