



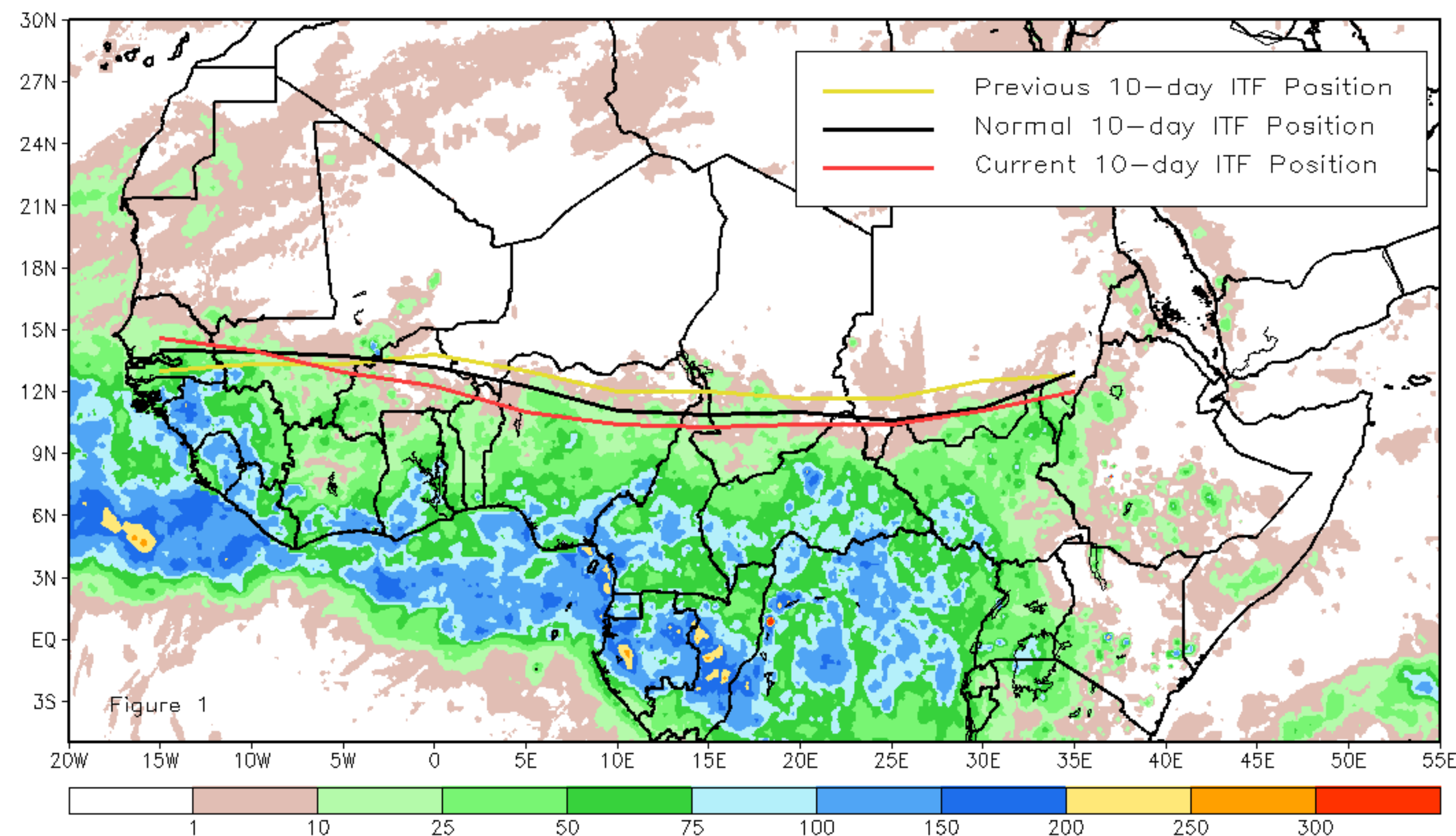
CPC Africa Desk InterTropical (ITF) Front Analysis

October 2021, Dekad 3

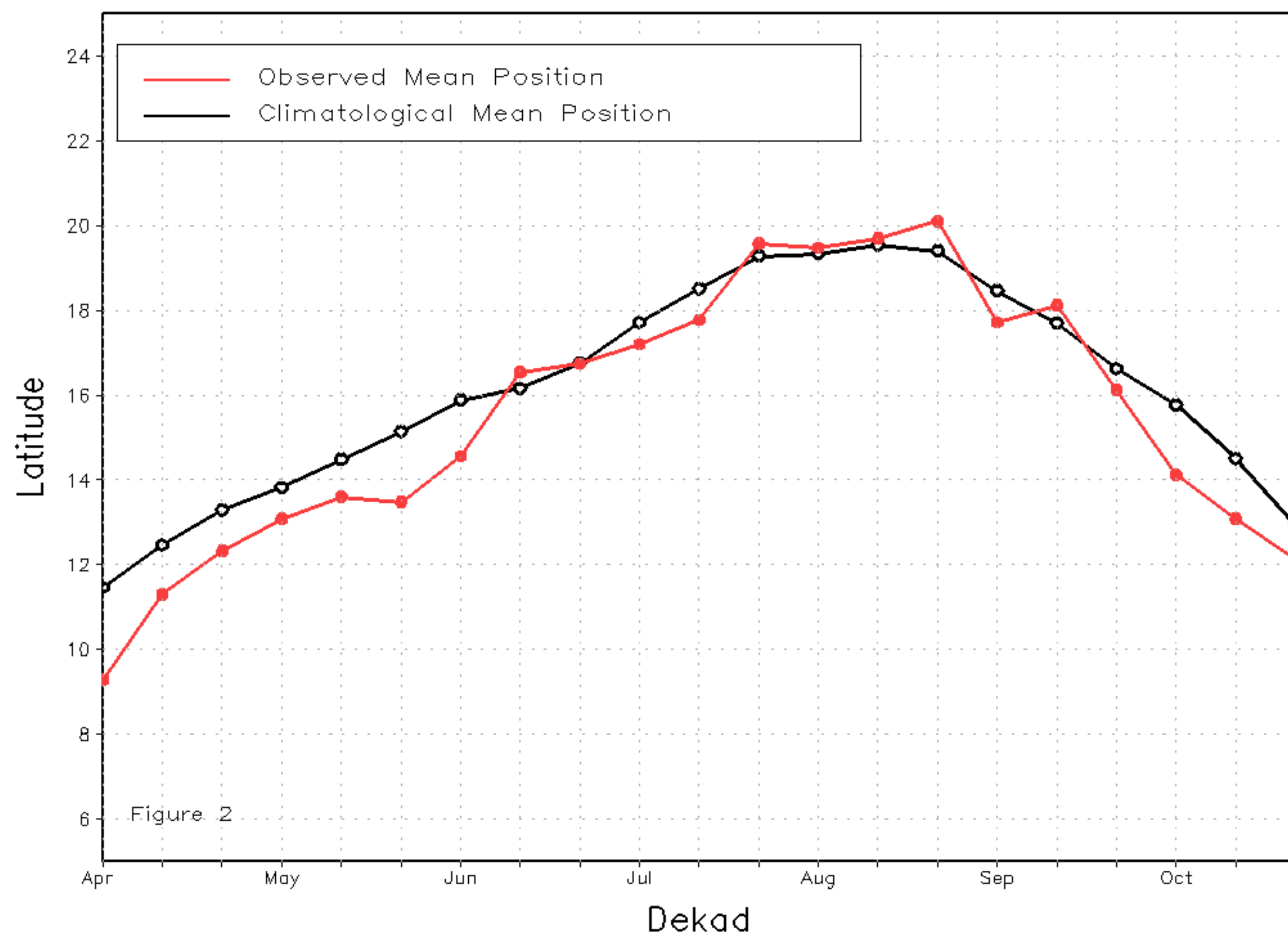
Discussion:

From 21-31 October, the ITF retreated farther south relative to its previous position, which resulted in an overall anomalous southerly position, except along its western edge. The western (10W-10E) portion of the ITF was located approximately at 12.1N, which led the mean position by 0.7 degree. The eastern (20E-35E) portion of the ITF was approximated at 11N, which led the climatological position by 0.4 degree. Figure 1 displays the current position of the ITF relative to the long-term average position during the 3rd dekad of October and its previous position during the 2nd dekad of October. Figures 2 and 3 are time series, illustrating the latitudinal values of the western and eastern portions of the ITF, respectively, and their seasonal evolutions since the beginning of April, 2021.

Current vs. Normal Dekadal ITF Position
and RFE Accumulated Precipitation (mm)
October 2021, Dekad 3



Mean Western Portion of the ITF: Averaged 10W to 10E
As of: October 2021, Dekad 3



Mean Eastern Portion of the ITF: Averaged 20E to 35E
As of: October 2021, Dekad 3

