

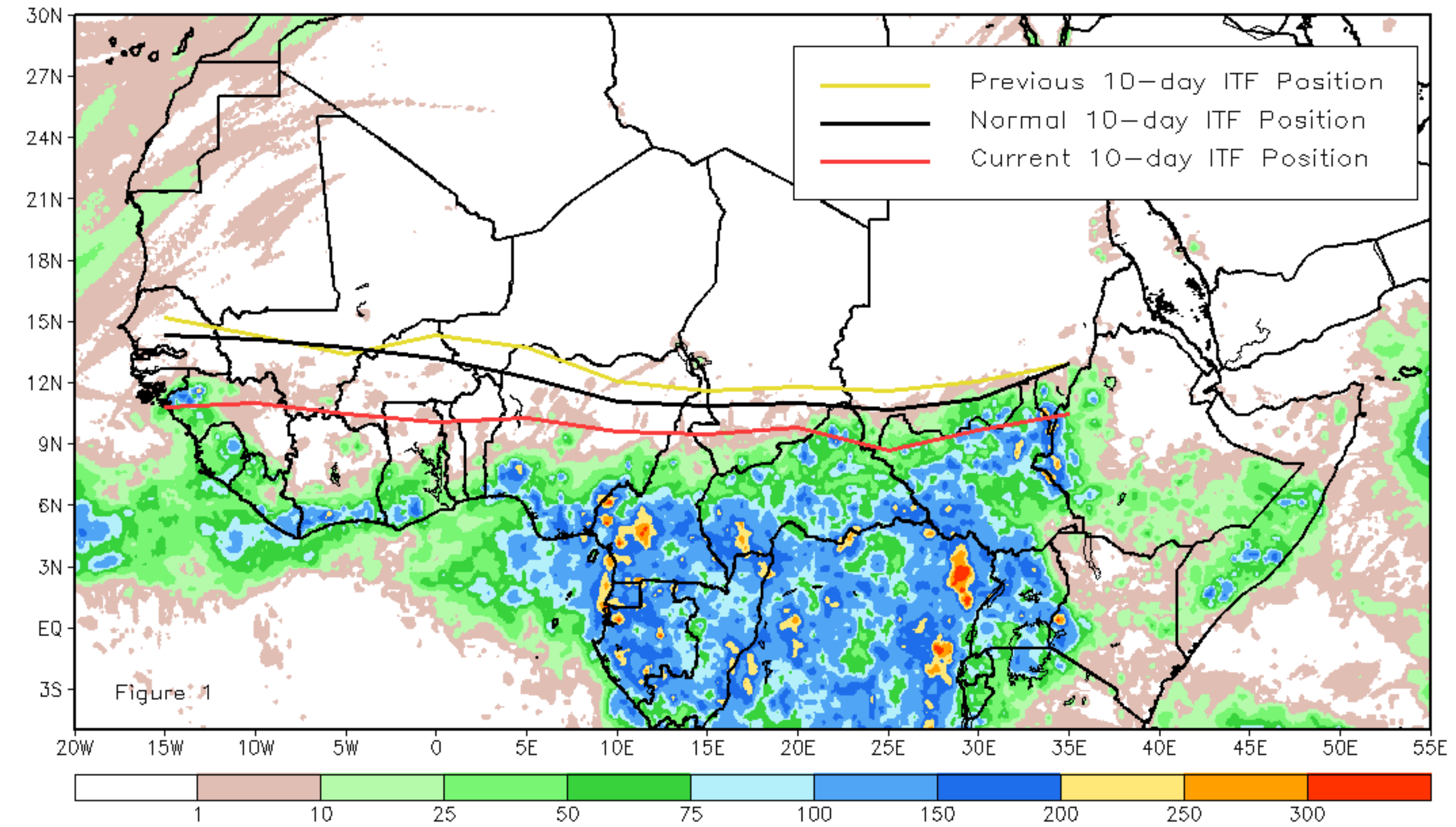


CPC Africa Desk InterTropical (ITF) Front Analysis October 2020, Dekad 3

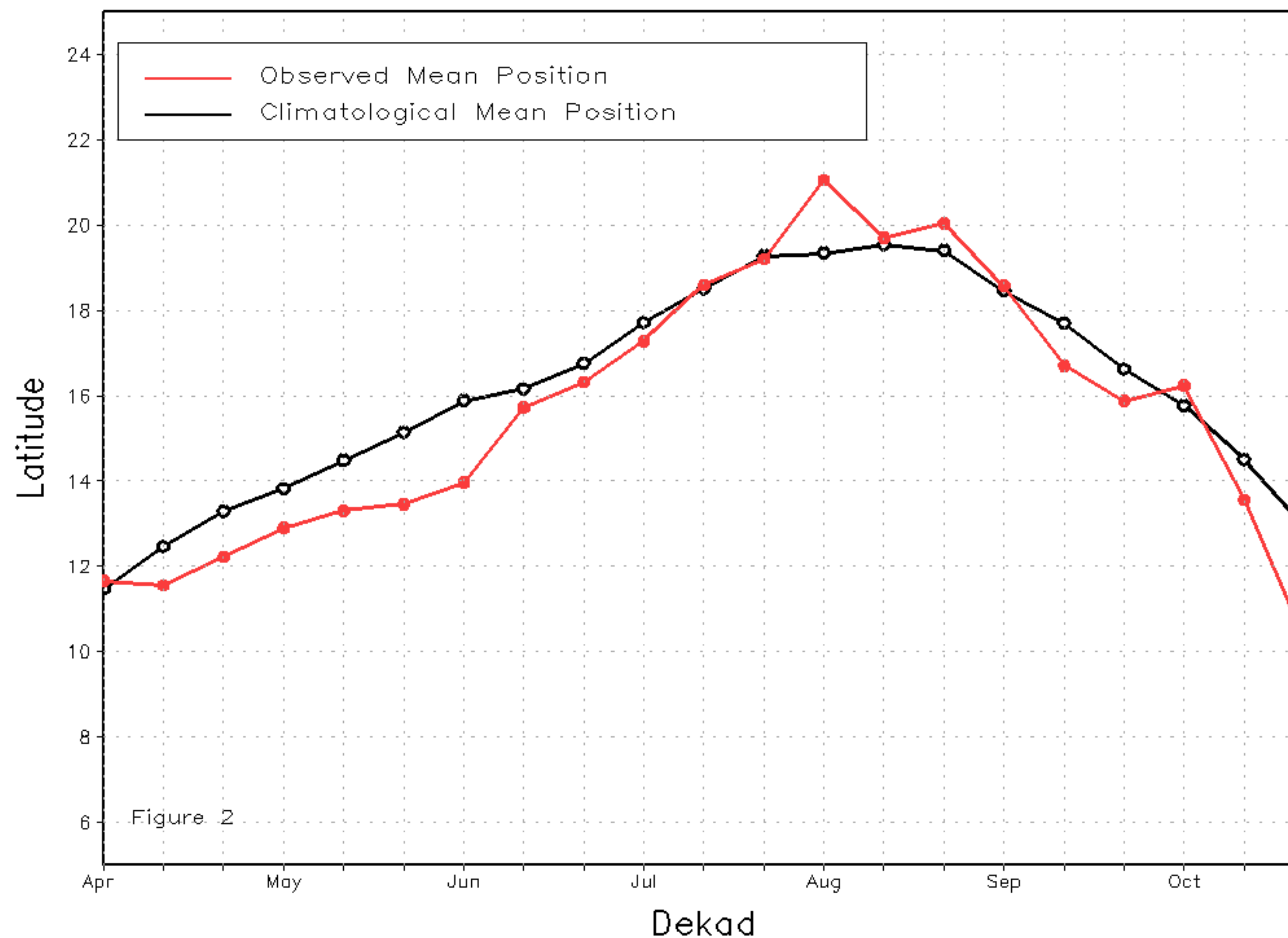
Discussion:

From October 21-31, the ITF continued its rapid retreat equatorward. The ITF was located anomalously south of the long-term average position along its entire length. This abnormal position led to below-average rainfall across much of the sudanian-guinean region of West Africa; but brought persistent above-average rainfall over parts of northeastern South Sudan. The mean western portion of the ITF was approximated at 10.3 degrees N and was to the south of the mean position by 2.6 degrees. The mean eastern portion of the ITF was located at 9.7 degrees N, which was to the south of the climatological position by 1.7 degrees. Figure 1 displays the current position of the ITF relative to the long-term average position during the 3rd dekad of October and its previous position during the 2nd dekad of October. Figures 2 and 3 are time series, illustrating the latitudinal values of the western and eastern portions of the ITF, respectively, and their seasonal evolutions since April, 2020.

Current vs. Normal Dekadal ITF Position
and RFE Accumulated Precipitation (mm)
October 2020, Dekad 3



Mean Western Portion of the ITF: Averaged 10W to 10E
As of: October 2020, Dekad 3



Mean Eastern Portion of the ITF: Averaged 20E to 35E
As of: October 2020, Dekad 3

