



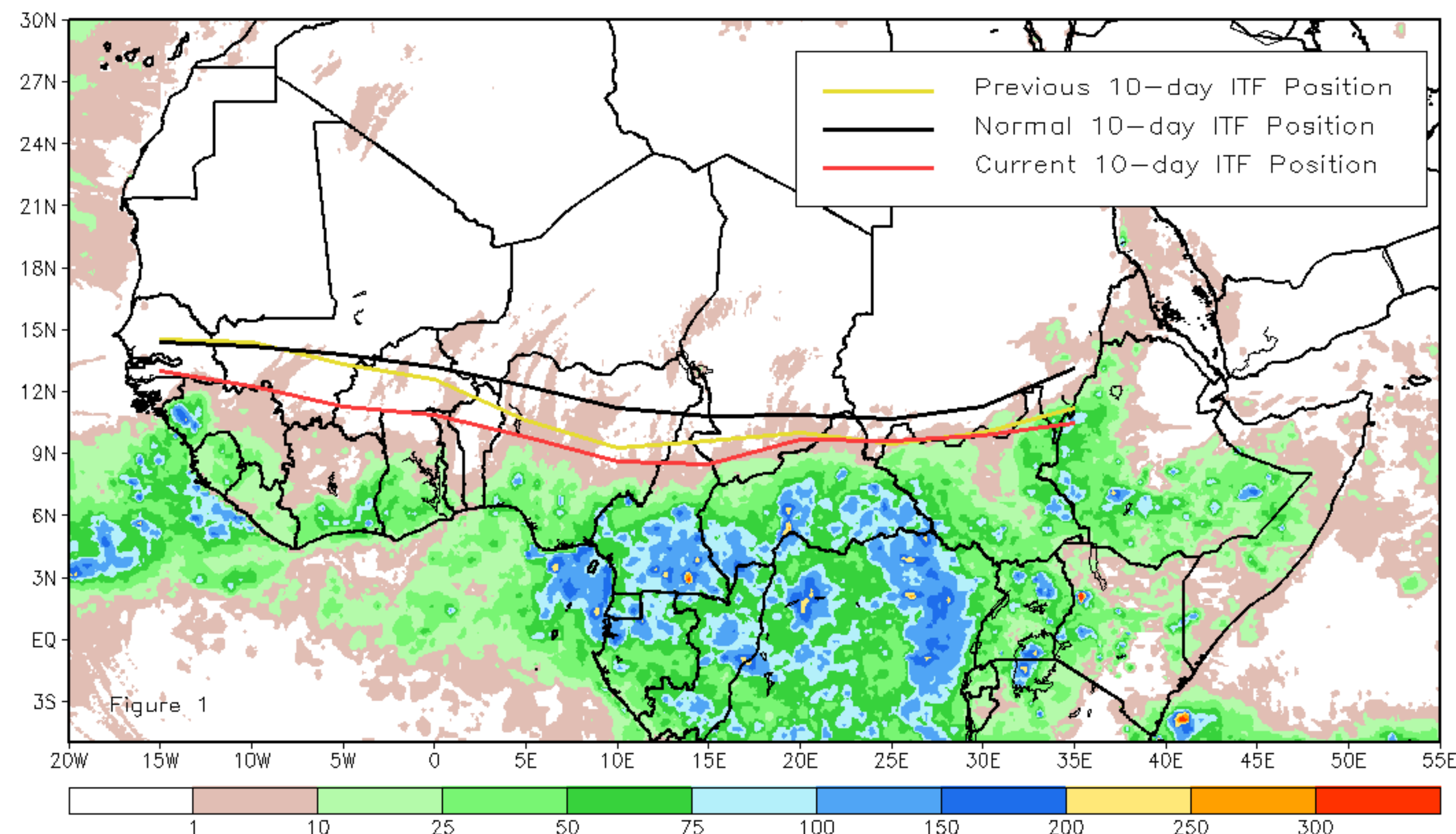
# CPC Africa Desk InterTropical (ITF) Front Analysis

## October 2017, Dekad 3

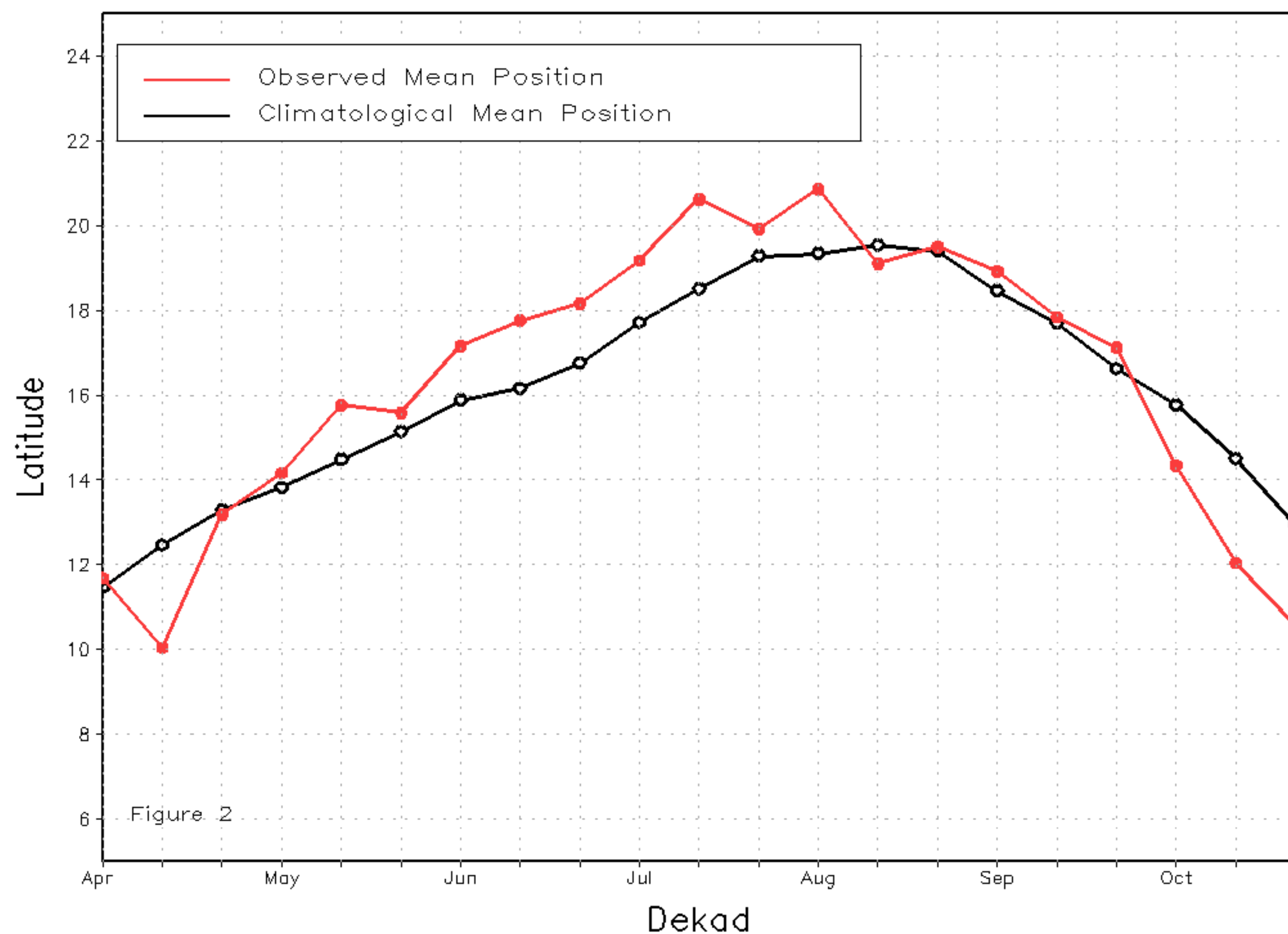
### Discussion:

From October 20-31, the ITF continued its equatorward retreat and remained everywhere south of its climatological position. The mean western (10W-10E) portion of the ITF was approximated at 10.6 degrees N and was significantly south of the mean climatological position by 2.3 degrees. As a result of the anomalously equatorward position of the ITF, rainfall has been suppressed across West Africa. Many areas saw an early cessation to the monsoon season. The mean eastern (20E-35E) portion of the ITF was approximated at 10.0 degrees N after slight southward movement, and was south of the average position by 1.5 degrees. Drier than normal conditions were observed during the dekad in South Sudan and Central African Republic, but locally rainy conditions persisted in western Ethiopia. Figure 1 shows the current position of the ITF relative to its climatological position during the 3rd dekad of October and its previous position during the 2nd dekad of October. Figures 2 and 3 are time series, illustrating the mean latitudinal values of the western and eastern portion of the ITF, respectively, and their evolutions since April, 2017.

Current vs. Normal Dekadal ITF Position  
and RFE Accumulated Precipitation (mm)  
October 2017, Dekad 3



Mean Western Portion of the ITF: Averaged 10W to 10E  
As of: October 2017, Dekad 3



Mean Eastern Portion of the ITF: Averaged 20E to 35E  
As of: October 2017, Dekad 3

