



# CPC Africa Desk InterTropical (ITF) Front Analysis

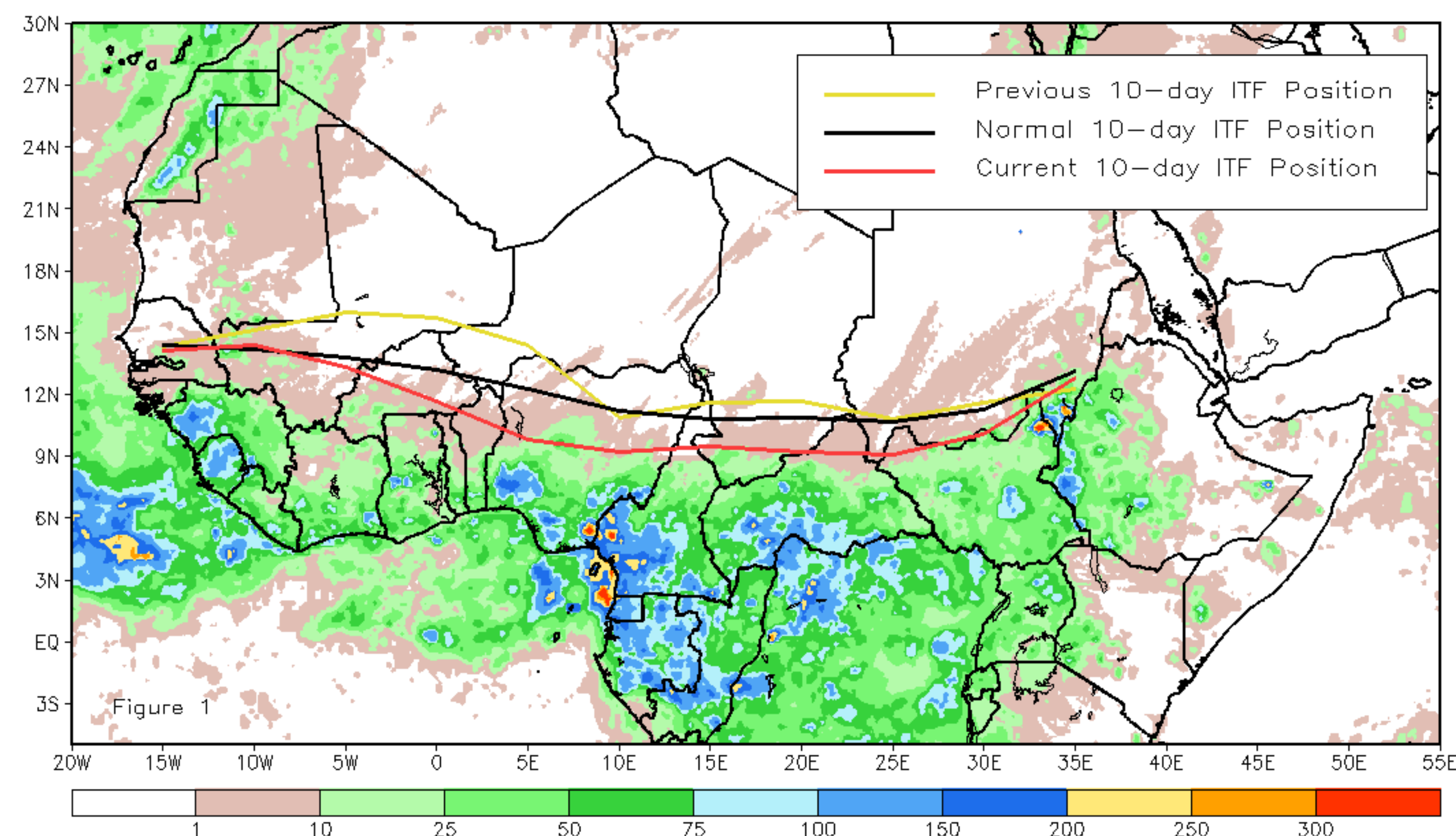
## October 2016, Dekad 3

### Discussion:

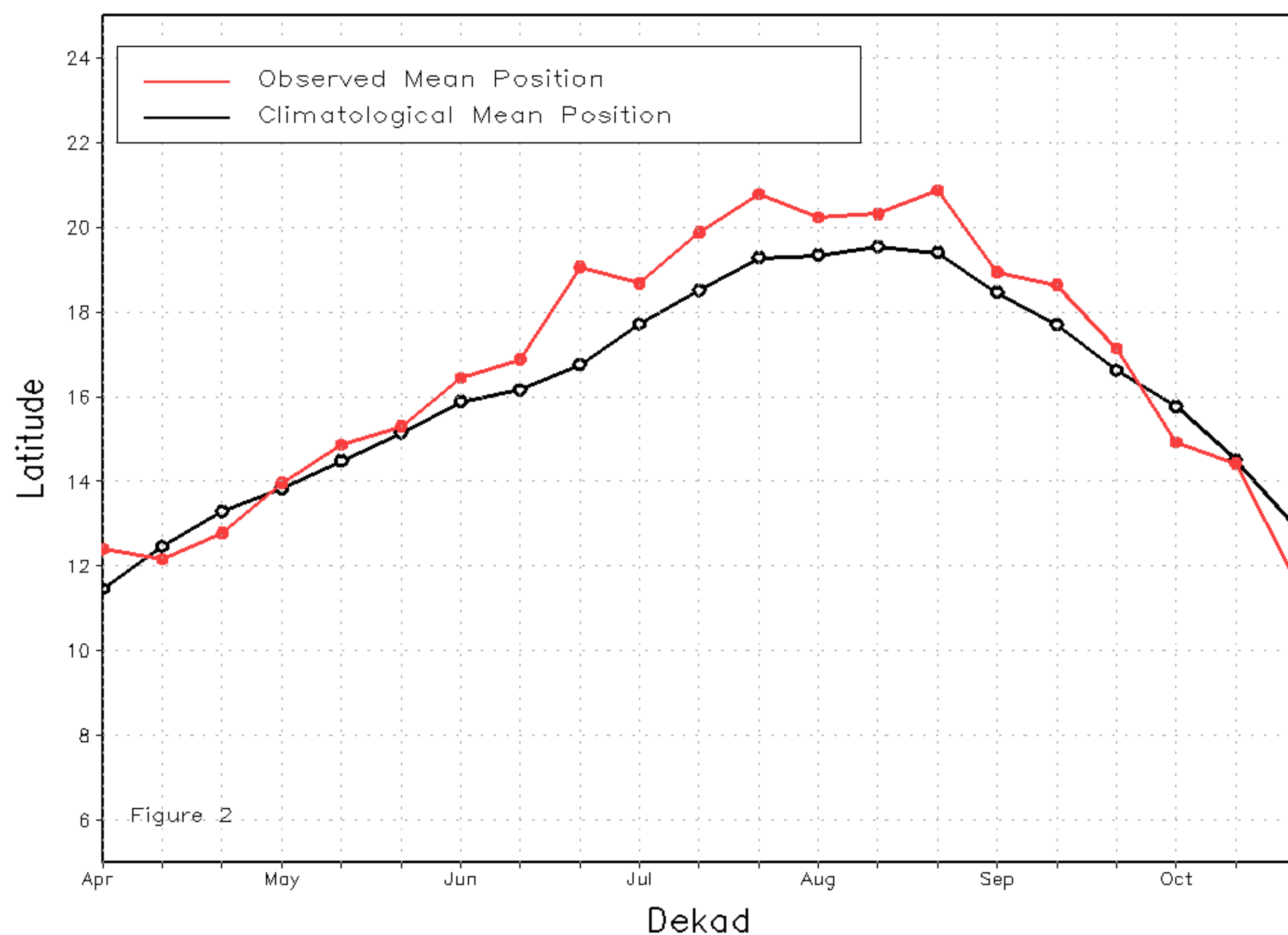
From October 21-31, the ITF retreated rapidly to the south, reducing rainfall over many areas of Africa. The ITF was anomalously south of both the climatological position and its location during the previous dekad. The mean western (10W-10E) portion of the ITF was approximated at 11.7N, while the long-term average position was at 12.9N. Similarly, the mean eastern (20E-35E) portion of the ITF was located nearly at 10.3N, whereas the climatological position was at 11.5N. Figure 1 shows the current position of the ITF relative to its climatological position during the 3rd dekad of October, and its previous position during the 2nd dekad of October. Figures 2 and 3 are time series, illustrating the mean latitudinal values of the western and eastern portions of the ITF, respectively, and their evolutions since April, 2016.

Current vs. Normal Dekadal ITF Position  
and RFE Accumulated Precipitation (mm)

October 2016, Dekad 3



Mean Western Portion of the ITF: Averaged 10W to 10E  
As of: October 2016, Dekad 3



Mean Eastern Portion of the ITF: Averaged 20E to 35E  
As of: October 2016, Dekad 3

