



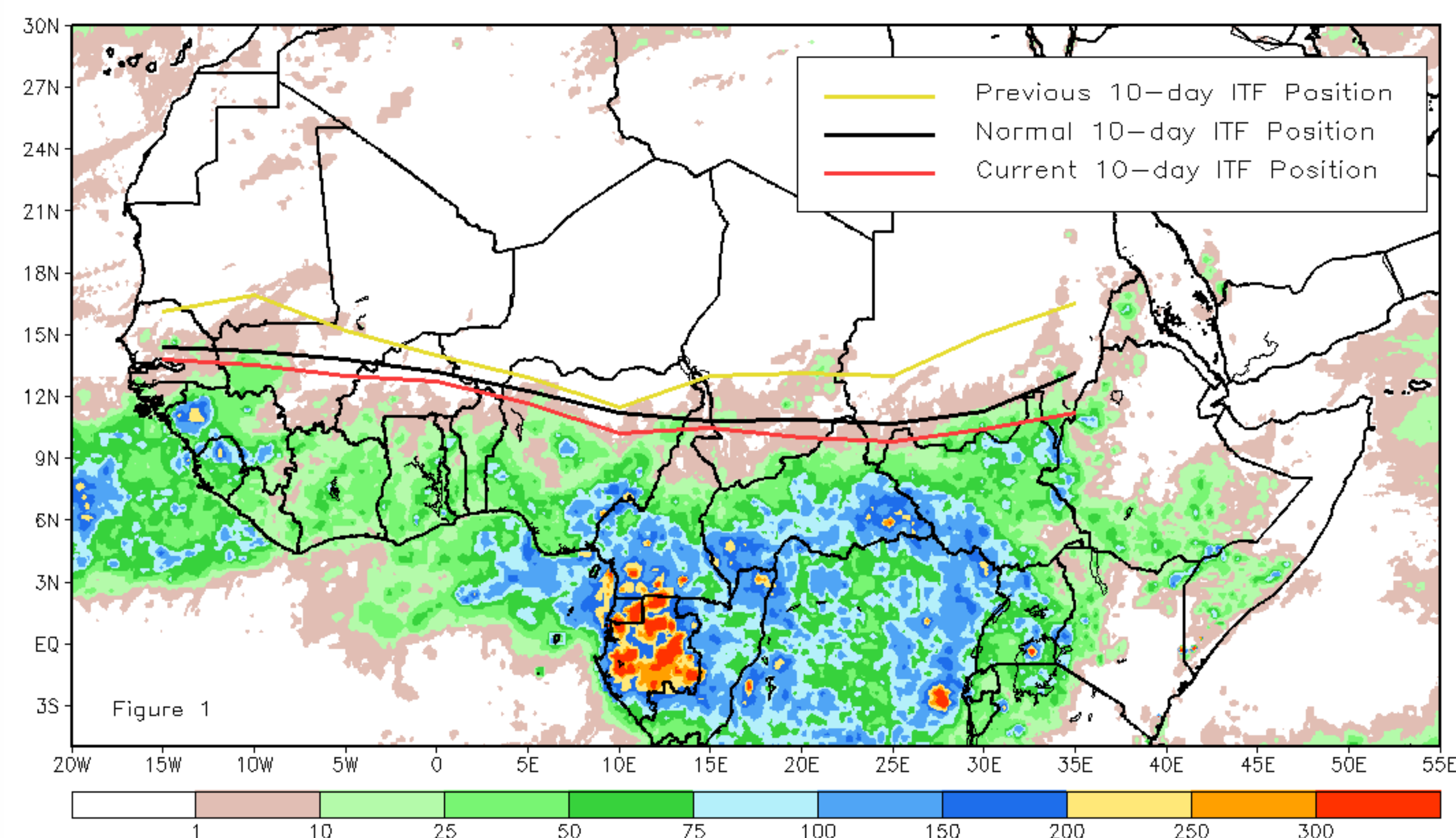
CPC Africa Desk InterTropical (ITF) Front Analysis

October 2014, Dekad 3

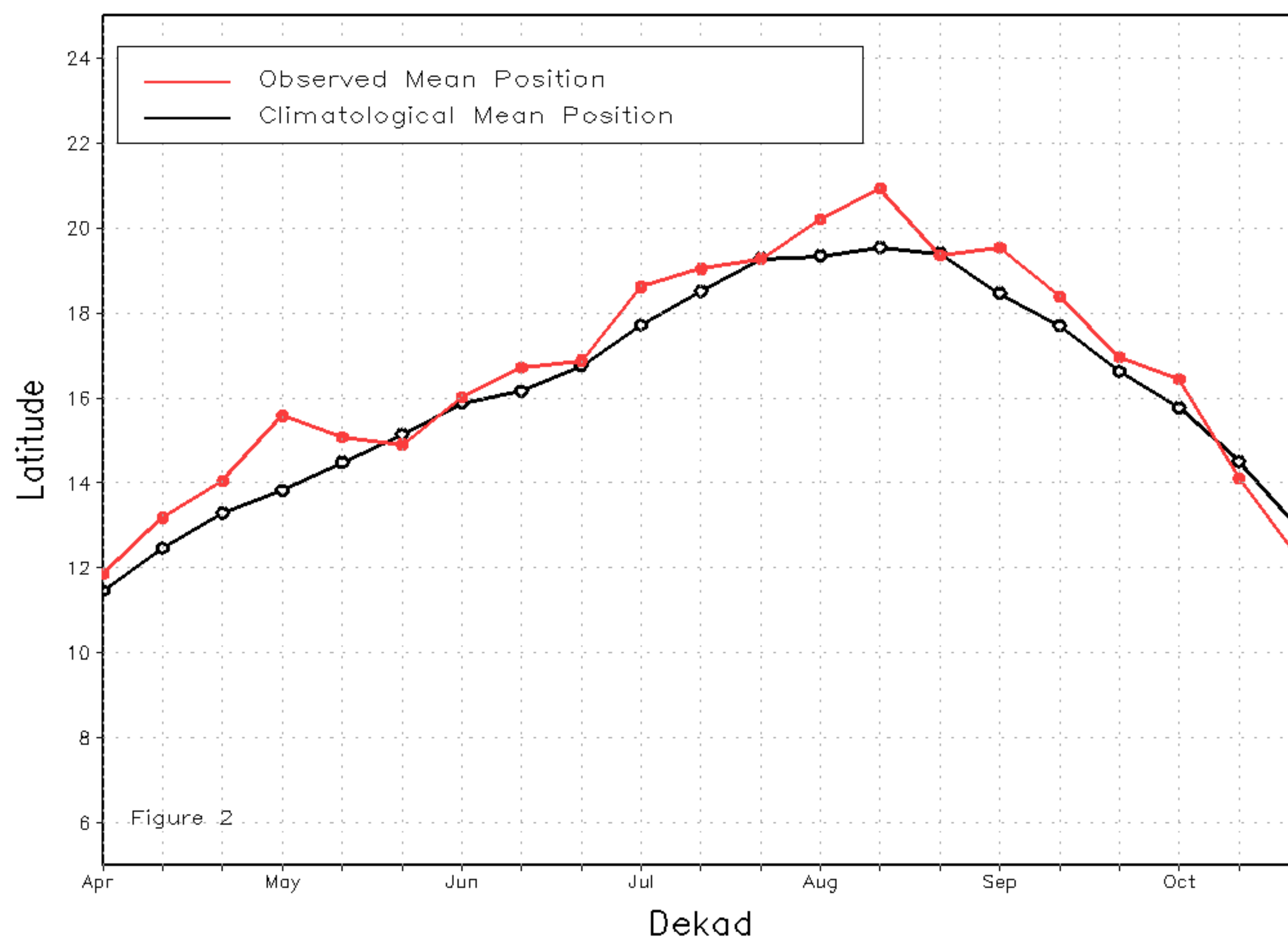
Discussion:

From October 21-31, 2014, the ITF progressed equatorward across both eastern and western sections of Africa, ending up located anomalously south of the mean climatological position. The mean western portion of the ITF (10W to 10E) was approximately at 12.2N, which was 0.7 degrees south of the mean climatological position and 1.9 degrees south of the previous dekads position. The final dekad of October observed rapid equatorward movement of the ITF across West Africa as rains were concentrated along the Gulf of Guinea with only light showers observed across the Sahel. The mean eastern position of the ITF (20E to 35E) was approximated at 10.3N, which was 1.2 degrees south of the mean climatological position and 4.1 degrees south of the previous dekads position. The ITF over eastern Africa retreated significantly towards the equator during the most recent dekad resulting in the largest dekad to dekad difference in position dating back to April. This resulted in little rainfall across southern Sudan. Figure 1 shows the current ITF position relative to the positions of climatology for the third dekad of October, and its previous position during the second dekad of October. Figures 2 and 3 are time series illustrating the mean latitudinal values of the western and eastern portions of the ITF, respectively, and their observed progressions since April, 2014.

Current vs. Normal Dekadal ITF Position
and RFE Accumulated Precipitation (mm)
October 2014, Dekad 3



Mean Western Portion of the ITF: Averaged 10W to 10E
As of: October 2014, Dekad 3



Mean Eastern Portion of the ITF: Averaged 20E to 35E
As of: October 2014, Dekad 3

