



CPC Africa Desk InterTropical (ITF) Front Analysis

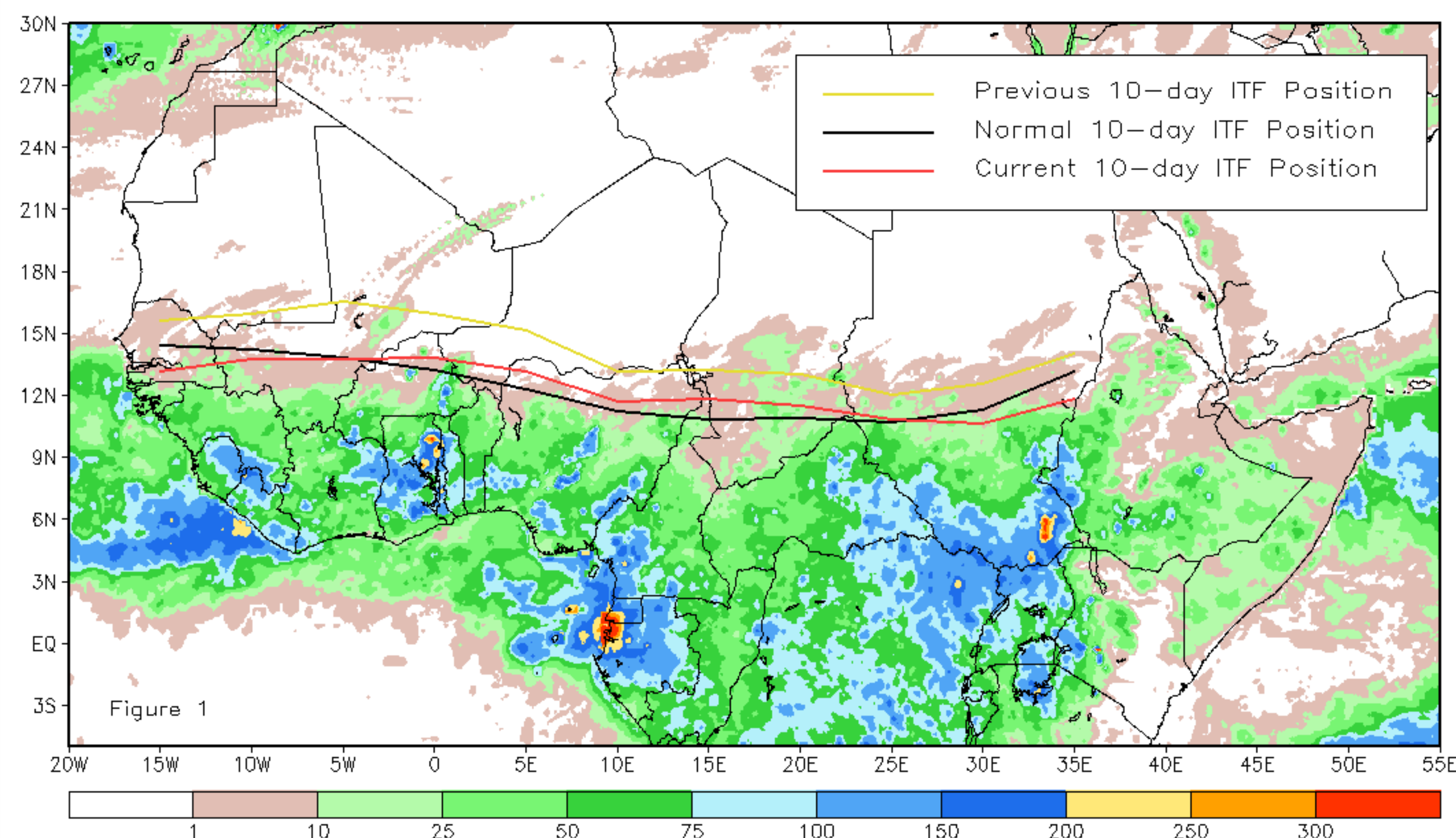
October 2012, Dekad 3

Discussion:

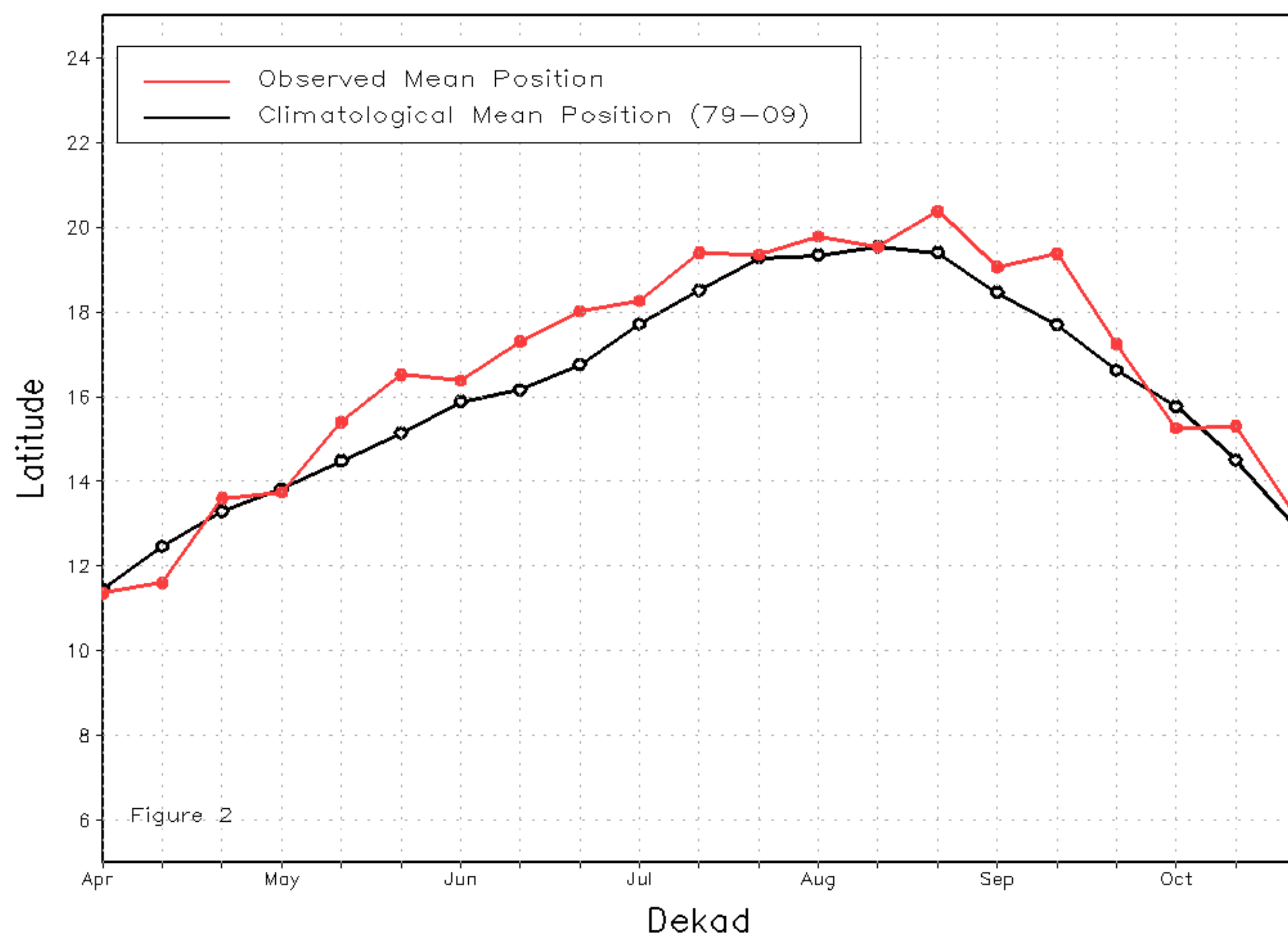
During the last dekad of October, the ITF continued its seasonal equatorward retreat throughout western and eastern Africa. The mean western portion of the ITF was approximately located at 13.2 degrees North, and remained slightly above the climatological mean position for the third dekad of October (12.9). The anomalous ITF position in the west concludes an anomalously wet West Africa monsoon season, where the ITF exhibited several above-average dekadal positions throughout the majority of the year. The mean eastern portion of the ITF was approximately located at 11.2 degrees North, and remained slightly below the mean climatological position (11.5). The below average position in the east was associated with consecutive days of broad scale northerly flow and low dewpoints centered over Sudan and South Sudan. Figure 1 shows the current ITF position relative to its long-term average position during the second dekad of October and its previous position during the second dekad of October. Figures 2 and 3 are time series, illustrating the mean latitudinal values of the western and eastern portion of the ITF, respectively, and their evolutions since April, 2012.

Current vs. Normal Dekadal ITF Position
and RFE Accumulated Precipitation (mm)

October 2012, Dekad 3



Mean Western Portion of the ITF: Averaged 10W to 10E
As of: October 2012, Dekad 3



Mean Eastern Portion of the ITF: Averaged 20E to 35E
As of: October 2012, Dekad 3

